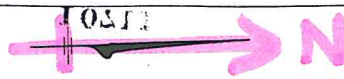
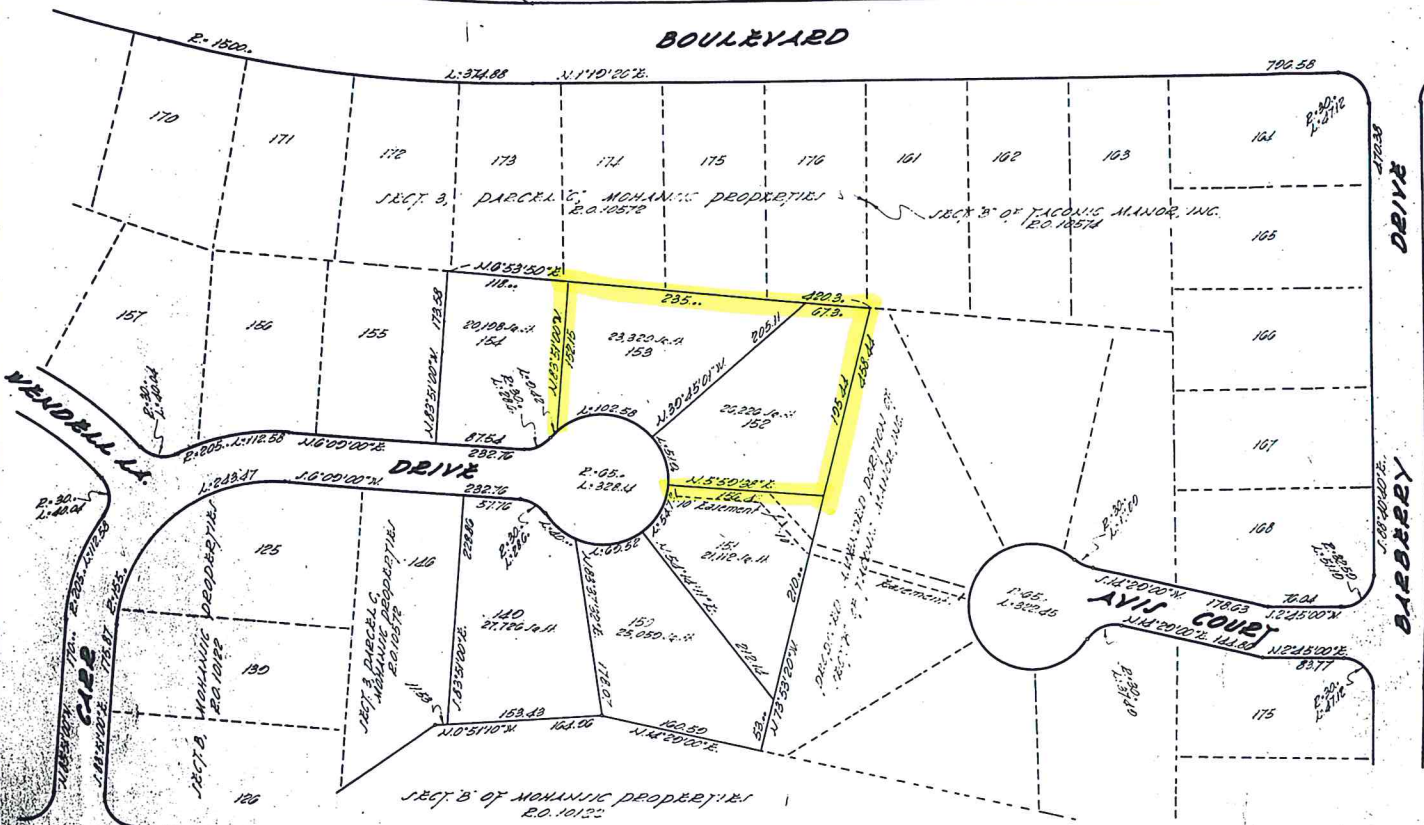


15011



15011



WESTCHESTER COUNTY DEPT. OF HEALTH
WHITE PLAINS, N.Y.

Approved subject to provision of public water supply and to sewer sewage disposal facilities in each building. Outlets hereafter constructed to be installed in accordance with plan and specifications duly approved and filed in this office prior to the construction of such building. Each purchaser of property shown hereon shall be furnished a true copy of map showing this endorsement.

Note: No component part of any sewage disposal system shall be constructed, located or maintained within fifty (50) ft. of any spring, water course, marsh or reservoir.

Note: Rules and regulations protecting the public water supply of the City of New York require approval of separate sewage facilities on each site in addition to approval by the Westchester County Dept. of Health.

Note: Lots shown hereon shall be developed by individual blocks. Where subdivision conditions require, lots shall be combined to provide a minimum of 5000 sq. ft. of usable area for separate sewage disposal. Disposal of sewage is subject to rules and regulations for separate sewage disposal as promulgated by the Westchester County Dept. of Health.

17 September 1955 *Corwin O'Donnell*
Commissioner of Health

APPROVED BY THE PLANNING BOARD
OF THE TOWN OF YORKTOWN

John A. Hill
Mayor
Wm. H. ...
Treasurer
Oct 26, 1955

THE UNDERSIGNED HAVE HEREBY
AGREED TO THE PLATING OF THE
MOHANSIC PROPERTIES, AS
SHOWN ON THIS PLAT.

AMENDED PORTION OF
SECTION 3 - PARCEL C
OF
MOHANSIC PROPERTIES
SITUATE IN
TOWN OF YORKTOWN
WESTCHESTER COUNTY, N.Y.
15011 2ND COUNTY BASIN, N. 10TH
SCHEDULED AUG. 25, 1956

NOTARIAL PUBLIC
Edward R. Hansen
County Clerk
November 12, 1956

15011
#300

We, J. Henry Carpenter, Jr., the Engineers and Surveyors
who made this Map, do hereby certify that the Survey shown
hereon was completed in April 1956 and that this Map was
completed Aug. 25, 1956.

J. HENRY CARPENTER, JR.
ENGINEERS AND SURVEYORS
100 EAST 42ND STREET, N.Y.C.
10011
N.Y. PROFESSIONAL ENGINEERS AND SURVEYORS

15011

15011

15011

MAP NO. 170-11
FILED
REDUCED 30 PERCENT