



**2240 SAW MILL RIVER ROAD**  
**ELMSFORD, NY 10523**  
**(914) 592-4520**  
**(914) 592-5068(FAX)**

---

June 28th, 2021

Bergmann  
2 Winners Circle Suite 102  
Albany, NY 12205

Dear Mr. Redding

We completed the inventory of the trees at the location. We tagged all trees over 8" in diameter and collected the species, DBH and condition. The work was done by ISA Certified Arborist employed by Bartlett Tree Experts.

If you have any question's please feel free to give me a call.

Sincerely

Trevor Hall  
Bartlett Tree Experts  
ISA Certified Arborist PD0269

# INVENTORY REPORTS

## CURRENT INVENTORY

### Foothill Solar Yorktown Heights, NY (8719)

## EXECUTIVE SUMMARY

Total number of Trees: **1871**, tree grouping **0**, total number Genera **18** & Species **27**  
Total number of Trees Recommended for Pruning **0** with percentage of total **0.00%**  
Total number of Removals **0** with percentage of total **0.00%**  
Total number of Basic Tree Risk Assessments (Level 2) **0** with percentage of total **0.00%**  
Total number of Advanced Assessments (Level 3) **0** with percentage of total **0.00%**  
Total number of Structural Support Systems with percentage of total **0.00%**  
Total number of Root Collar Excavations **0** with percentage of total **0.00%**  
Total number of Root Invigoration™ **0** with percentage of total **0.00%**  
Total number of Soil Rx® **0** with percentage total **0.00%**  
Total number of Trees Recommended for Lightning Protection Systems **0** with percentage of total **0.00%**  
Total number of Trees Recommended for Plant Health Care **3** with percentage of total **0.16%**  
Total number of Trees with Observations or other structural issues **59** with percentage of total **3.15%**  
Total number of Trees with Vines **14** with percentage of total **0.75%**

[Legal Information](#) | [Sign Out \(index.cfm?clear\)](#)

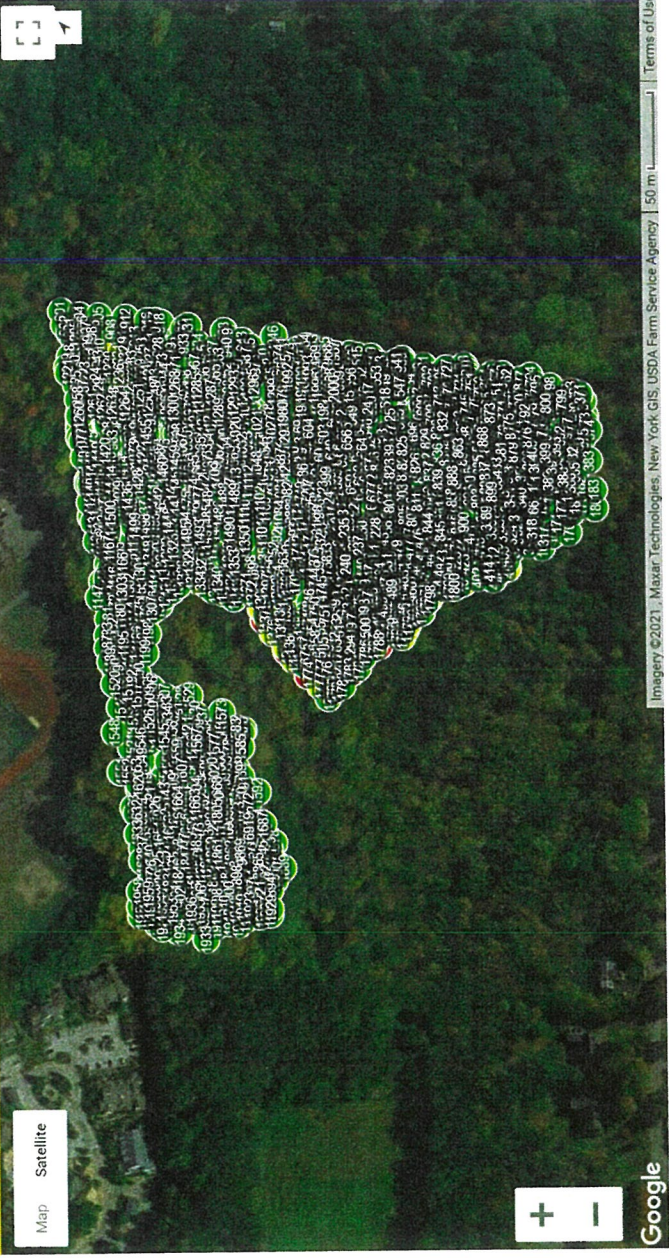
© 2021 The F.A. Bartlett Tree Expert Company (<https://bartlett.com>). All rights reserved.

CUM

# FOOTHILL SOLAR YORKTOWN HEIGHTS, NY



Map Satellite



Google

Tree ID	Host ID	Common NAdditional	Latitude	Longitude	Location ty	Location vø DBH height	DBH 1	DBH 2	DBH 3	DBH 4	DBH 5	DBH 6	Condition	c Stems
130	FAGR Fagu: Beech-Amé ...		41.33281	-73.8587	Open	Good	4.5	19	0	0	0	0	0 Good	1
131	FAGR Fagu: Beech-Amé ...		41.33285	-73.8587	Open	Good	4.5	16	0	0	0	0	0 Good	1
132	BELE Betuli: Birch-Swee ...		41.33286	-73.8588	Open	Good	4.5	13	0	0	0	0	0 Good	1
133	BELE Betuli: Birch-Swee ...		41.33286	-73.8587	Open	Good	4.5	13	0	0	0	0	0 Fair	1
134	BELE Betuli: Birch-Swee ...		41.33287	-73.8586	Open	Good	4.5	14	0	0	0	0	0 Good	1
135	BELE Betuli: Birch-Swee ...		41.33288	-73.8586	Open	Good	4.5	14	0	0	0	0	0 Fair	1
136	ACSA2 Ace: Maple-Sug: ...		41.33292	-73.8586	Open	Good	4.5	8	0	0	0	0	0 Good	1
137	BELE Betuli: Birch-Swee ...		41.33295	-73.8587	Open	Good	4.5	8	0	0	0	0	0 Good	1
138	BELE Betuli: Birch-Swee ...		41.33293	-73.8587	Open	Good	4.5	11	0	0	0	0	0 Fair	1
139	BELE Betuli: Birch-Swee ...		41.33297	-73.8587	Open	Good	4.5	14	0	0	0	0	0 Good	1
140	FAGR Fagu: Beech-Amé ...		41.33308	-73.8588	Open	Good	4.5	13	0	0	0	0	0 Fair	1
141	FAGR Fagu: Beech-Amé ...		41.33305	-73.8588	Open	Good	4.5	8	0	0	0	0	0 Good	1
142	QUAL Quer Oak-White ...		41.33299	-73.8588	Open	Good	4.5	19	0	0	0	0	0 Fair	1
143	QUAL Quer Oak-White ...		41.33295	-73.8588	Open	Good	4.5	18	0	0	0	0	0 Good	1
144	BELE Betuli: Birch-Swee ...		41.3333	-73.8589	Open	Good	4.5	11	0	0	0	0	0 Good	1
145	QUAL Quer Oak-White ...		41.33303	-73.8589	Open	Good	4.5	12	0	0	0	0	0 Fair	1
146	BELE Betuli: Birch-Swee ...		41.33302	-73.8589	Open	Good	4.5	11	0	0	0	0	0 Fair	1
147	QUAL Quer Oak-White ...		41.33305	-73.8589	Open	Good	4.5	16	0	0	0	0	0 Fair	1
148	QUAL Quer Oak-White ...		41.33309	-73.8589	Open	Good	4.5	9	0	0	0	0	0 Poor	1
149	QRU Que Oak-North ...		41.33308	-73.859	Open	Good	4.5	15	0	0	0	0	0 Fair	1
150	QUAL Quer Oak-White ...		41.33301	-73.859	Open	Good	4.5	14	0	0	0	0	0 Poor	1
151	BELE Betuli: Birch-Swee ...		41.3333	-73.8589	Open	Good	4.5	12	0	0	0	0	0 Good	1
152	BELE Betuli: Birch-Swee ...		41.33291	-73.8589	Open	Good	4.5	12	0	0	0	0	0 Good	1
153	BELE Betuli: Birch-Swee ...		41.33199	-73.8585	Open	Good	4.5	13	0	0	0	0	0 Good	1
154	BELE Betuli: Birch-Swee ...		41.33208	-73.8585	Open	Good	4.5	13	0	0	0	0	0 Good	1
155	BELE Betuli: Birch-Swee ...		41.33207	-73.8585	Open	Good	4.5	12	0	0	0	0	0 Good	1
156	BELE Betuli: Birch-Swee ...		41.33203	-73.8586	Open	Good	4.5	17	0	0	0	0	0 Good	1
157	BELE Betuli: Birch-Swee ...		41.33204	-73.8585	Open	Good	4.5	12.5	0	0	0	0	0 Good	1
158	BELE Betuli: Birch-Swee ...		41.332	-73.8585	Open	Good	4.5	10.5	0	0	0	0	0 Good	1
159	ACRU Acer Maple-Red ...		41.33204	-73.8585	Open	Good	4.5	14.5	0	0	0	0	0 Good	1
160	ACRU Acer Maple-Red ...		41.33195	-73.8584	Open	Good	4.5	10.5	0	0	0	0	0 Good	1
161	BELE Betuli: Birch-Swee ...		41.33205	-73.8585	Open	Good	4.5	17	0	0	0	0	0 Good	1
162	BELE Betuli: Birch-Swee ...		41.33203	-73.8585	Open	Good	4.5	12	0	0	0	0	0 Good	1
163	BELE Betuli: Birch-Swee ...		41.3321	-73.8585	Open	Good	4.5	11.5	0	0	0	0	0 Good	1
164	BELE Betuli: Birch-Swee ...		41.33209	-73.8585	Open	Good	4.5	12	0	0	0	0	0 Good	1
165	BELE Betuli: Birch-Swee ...		41.33205	-73.8586	Open	Good	4.5	12.5	0	0	0	0	0 Good	1
166	ACSA2 Ace: Maple-Sug: ...		41.33204	-73.8586	Open	Good	4.5	8	0	0	0	0	0 Good	1
167	BELE Betuli: Birch-Swee ...		41.33216	-73.8586	Open	Good	4.5	16	0	0	0	0	0 Good	1
168	BELE Betuli: Birch-Swee ...		41.33199	-73.8589	Open	Good	4.5	13.5	0	0	0	0	0 Good	1
169	ACSA2 Ace: Maple-Sug: ...		41.33193	-73.8588	Open	Good	4.5	18	0	0	0	0	0 Good	1
170	BELE Betuli: Birch-Swee ...		41.33183	-73.8587	Open	Good	4.5	14.5	0	0	0	0	0 Good	1
171	ACSA2 Ace: Maple-Sug: ...		41.3319	-73.8587	Open	Good	4.5	11.5	0	0	0	0	0 Good	1
172	ACSA2 Ace: Maple-Sug: ...		41.33182	-73.8586	Open	Good	4.5	11.5	0	0	0	0	0 Good	1













































965	BELE Betuli Birch-Swee ...	41.33395	-73.8575	Open	Good	4.5	17	11.5	10	8	0	0	0	Good	4
966	ACRU Acer Maple-Red ...	41.33401	-73.8575	Open	Good	4.5	10	0	0	0	0	0	0	Good	1
967	ACRU Acer Maple-Red ...	41.33407	-73.8574	Open	Good	4.5	15	0	0	0	0	0	0	Good	1
968	ACRU Acer Maple-Red ...	41.33412	-73.8575	Open	Good	4.5	11	0	0	0	0	0	0	Good	1
969	ACSA2 Acei Maple-Sug; ...	41.33421	-73.8573	Open	Good	4.5	11.5	0	0	0	0	0	0	Good	1
970	PIST Pinus iPine-Easter ...	41.33423	-73.8573	Open	Good	4.5	16	0	0	0	0	0	0	Good	1
971	ACRU Acer Maple-Red ...	41.33419	-73.8574	Open	Good	4.5	10.5	0	0	0	0	0	0	Good	1
972	ACSA2 Acei Maple-Sug; ...	41.33427	-73.8575	Open	Good	4.5	9	0	0	0	0	0	0	Good	1
973	ACRU Acer Maple-Red ...	41.33427	-73.8574	Open	Good	4.5	9	0	0	0	0	0	0	Good	1
974	ACRU Acer Maple-Red ...	41.33461	-73.8574	Open	Good	4.5	13	0	0	0	0	0	0	Good	1
975	ACRU Acer Maple-Red ...	41.33477	-73.8578	Open	Good	4.5	11.5	0	0	0	0	0	0	Poor	1
976	ACSA2 Acei Maple-Sug; ...	41.33476	-73.8579	Open	Good	4.5	18	0	0	0	0	0	0	Good	1
977	PR Prunus iCherry ...	41.33476	-73.8579	Open	Good	4.5	10	0	0	0	0	0	0	Good	1
978	CAGL Cary; Hickory-Pig ...	41.33476	-73.8579	Open	Good	4.5	15	9.5	0	0	0	0	0	Fair	2
979	ACRU Acer Maple-Red ...	41.33475	-73.8579	Open	Good	4.5	17.5	0	0	0	0	0	0	Poor	1
980	BELE Betuli Birch-Swee ...	41.33462	-73.8578	Open	Good	4.5	12	0	0	0	0	0	0	Good	1
981	ACSA2 Acei Maple-Sug; ...	41.33459	-73.8579	Open	Good	4.5	22	0	0	0	0	0	0	Good	1
982	ACSA2 Acei Maple-Sug; ...	41.33453	-73.8578	Open	Good	4.5	10	0	0	0	0	0	0	Good	1
983	QURU Que Oak-Northi ...	41.33457	-73.858	Open	Good	4.5	28.5	0	0	0	0	0	0	Good	1
984	ACRU Acer Maple-Red ...	41.33447	-73.8579	Open	Good	4.5	8	0	0	0	0	0	0	Good	1
985	ACRU Acer Maple-Red ...	41.33446	-73.858	Open	Good	4.5	11	0	0	0	0	0	0	Good	1
986	ACRU Acer Maple-Red ...	41.33444	-73.8579	Open	Good	4.5	20.5	6	0	0	0	0	0	Good	2
987	ACRU Acer Maple-Red ...	41.33442	-73.8579	Open	Good	4.5	10	0	0	0	0	0	0	Good	1
988	QURU Que Oak-Northi ...	41.33438	-73.8579	Open	Good	4.5	27	0	0	0	0	0	0	Good	1
989	ACRU Acer Maple-Red ...	41.33438	-73.8578	Open	Good	4.5	10.5	0	0	0	0	0	0	Good	1
990	QURU Que Oak-Northi ...	41.33443	-73.8578	Open	Good	4.5	24	0	0	0	0	0	0	Good	1
991	ACRU Acer Maple-Red ...	41.33449	-73.8577	Open	Good	4.5	17	0	0	0	0	0	0	Good	1
992	QURU Que Oak-Northi ...	41.33434	-73.8578	Open	Good	4.5	12	0	0	0	0	0	0	Good	1
993	ACRU Acer Maple-Red ...	41.33438	-73.8578	Open	Good	4.5	14.5	0	0	0	0	0	0	Good	1
994	QUAL Quer Oak-White ...	41.33434	-73.8578	Open	Good	4.5	15.5	0	0	0	0	0	0	Good	1
995	QUAL Quer Oak-White ...	41.33422	-73.8578	Open	Good	4.5	23	0	0	0	0	0	0	Good	1
996	QURU Que Oak-Northi ...	41.33419	-73.8579	Open	Good	4.5	17.5	0	0	0	0	0	0	Good	1
997	QUAL Quer Oak-White ...	41.3342	-73.8579	Open	Good	4.5	16	0	0	0	0	0	0	Good	1
998	BELE Betuli Birch-Swee ...	41.33418	-73.8579	Open	Good	4.5	12.5	7	0	0	0	0	0	Good	2
999	QUAL Quer Oak-White ...	41.3341	-73.8579	Open	Good	4.5	20	0	0	0	0	0	0	Good	1
1000	QURU Que Oak-Northi ...	41.33412	-73.8579	Open	Good	4.5	22.5	0	0	0	0	0	0	Good	1
1001	QUPA QueiOak-Pin ...	41.33407	-73.858	Open	Good	4.5	24.5	0	0	0	0	0	0	Good	1
1002	ACRU Acer Maple-Red ...	41.334	-73.858	Open	Good	4.5	10.5	0	0	0	0	0	0	Good	1
1003	QUAL Quer Oak-White ...	41.3339	-73.8579	Open	Good	4.5	15	0	0	0	0	0	0	Good	1
1004	QUAL Quer Oak-White ...	41.3339	-73.8579	Open	Good	4.5	13.5	0	0	0	0	0	0	Good	1
1005	ACRU Acer Maple-Red ...	41.33384	-73.8579	Open	Good	4.5	8	0	0	0	0	0	0	Good	1
1006	QUAL Quer Oak-White ...	41.33382	-73.858	Open	Good	4.5	10	0	0	0	0	0	0	Good	1
1007	QURU Que Oak-Northi ...	41.33384	-73.8579	Open	Good	4.5	25	0	0	0	0	0	0	Good	1
1008	ACRU Acer Maple-Red ...	41.3338	-73.8578	Open	Good	4.5	13	0	0	0	0	0	0	Good	1



















































