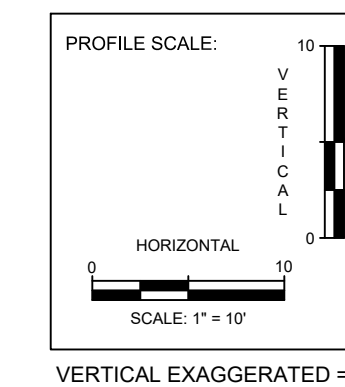


GENERAL NOTES:
SEE DRAWING NO. D-102 DETAIL SHEET 2 FOR BIORETENTION PROFILE DETAIL WITH SOIL SPECIFICATIONS AND PLANTING REQUIREMENTS.



NOTE:
UNDER NEW YORK STATE EDUCATION LAW ARTICLE 145 (ENGINEERING), SECTION 7209 (2), IT IS A VIOLATION FOR ANY PERSON, UNLESS ACTING UNDER THE DIRECTION OF A LICENSED PROFESSIONAL ENGINEER, TO ALTER THIS DOCUMENT.

NOTE: THESE PLANS ARE ACCOMPANIED BY SUPPLEMENTAL DOCUMENTS. THESE DOCUMENTS ARE INTERRELATED AND ARE INTENDED TO BE USED TOGETHER. THESE DOCUMENTS ARE INTENDED TO BE USED FOR LOCAL APPROVAL PURPOSES ONLY.
NOT FOR CONSTRUCTION



1430 Broadway, 10th Floor
New York, NY 10018
Phone: 212.221.7822
www.trccompanies.com
TRC Project No.: 431302.0000.0005



Sol Systems, LLC
1101 Connecticut Avenue NW
2nd Floor
Washington, DC 20036



Revisions:	
No.	Date:
1	SEPTEMBER 21, 2022
2	NOVEMBER 17, 2022
3	MAY 10, 2023

Drawn by:
A. REXROAT

Checked by:
S. MEERSMA

Approved by:
C. DUNCAN

SCS DELL 014136 YORKTOWN, LLC
DELL AVENUE SOLAR FARM
FIXED-TILT GROUND MOUNT SOLAR ENERGY SYSTEM
DELL AVENUE, YORKTOWN, NEW YORK 10514

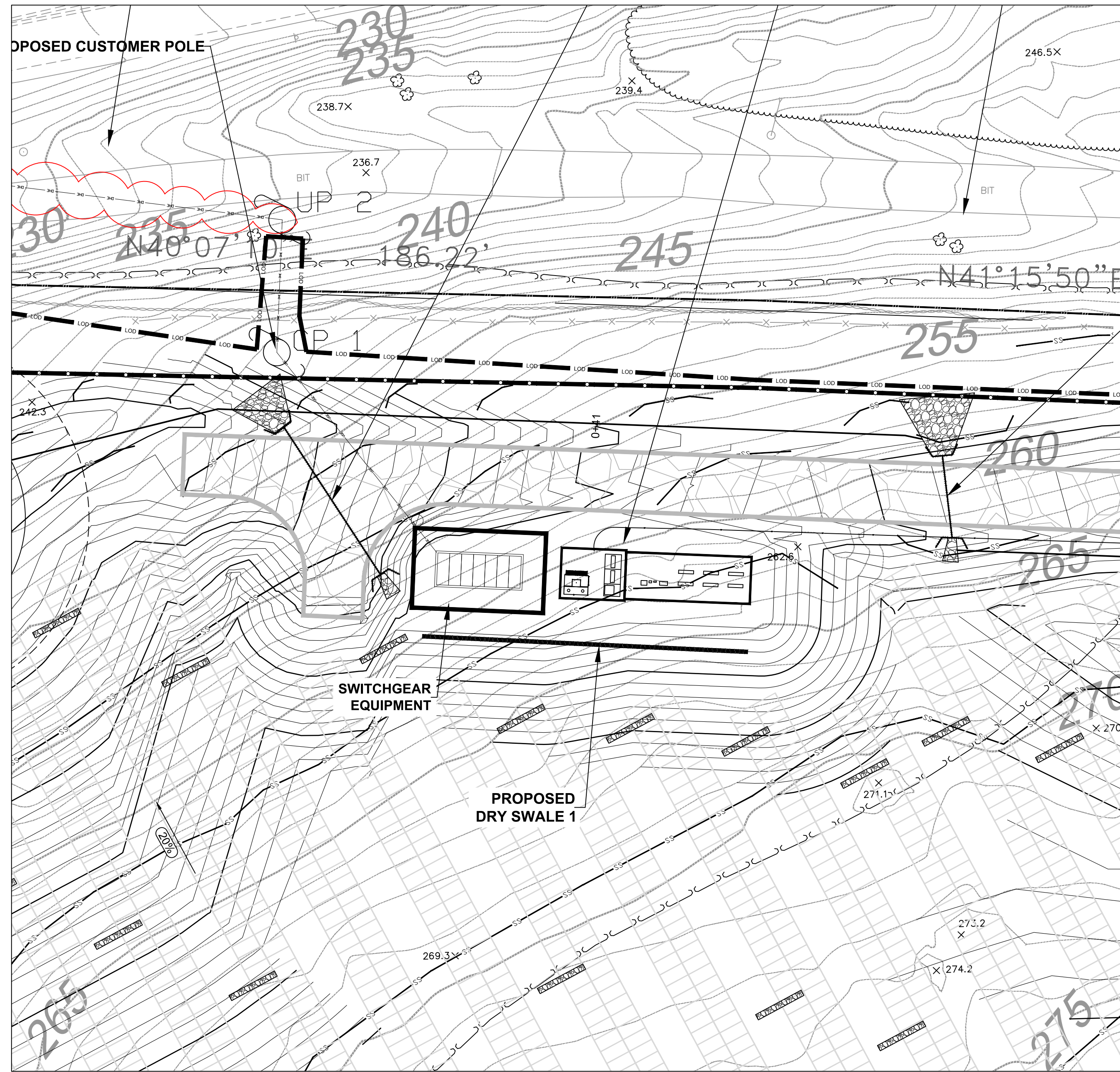
Contract No:
431302

Scale:
AS SHOWN

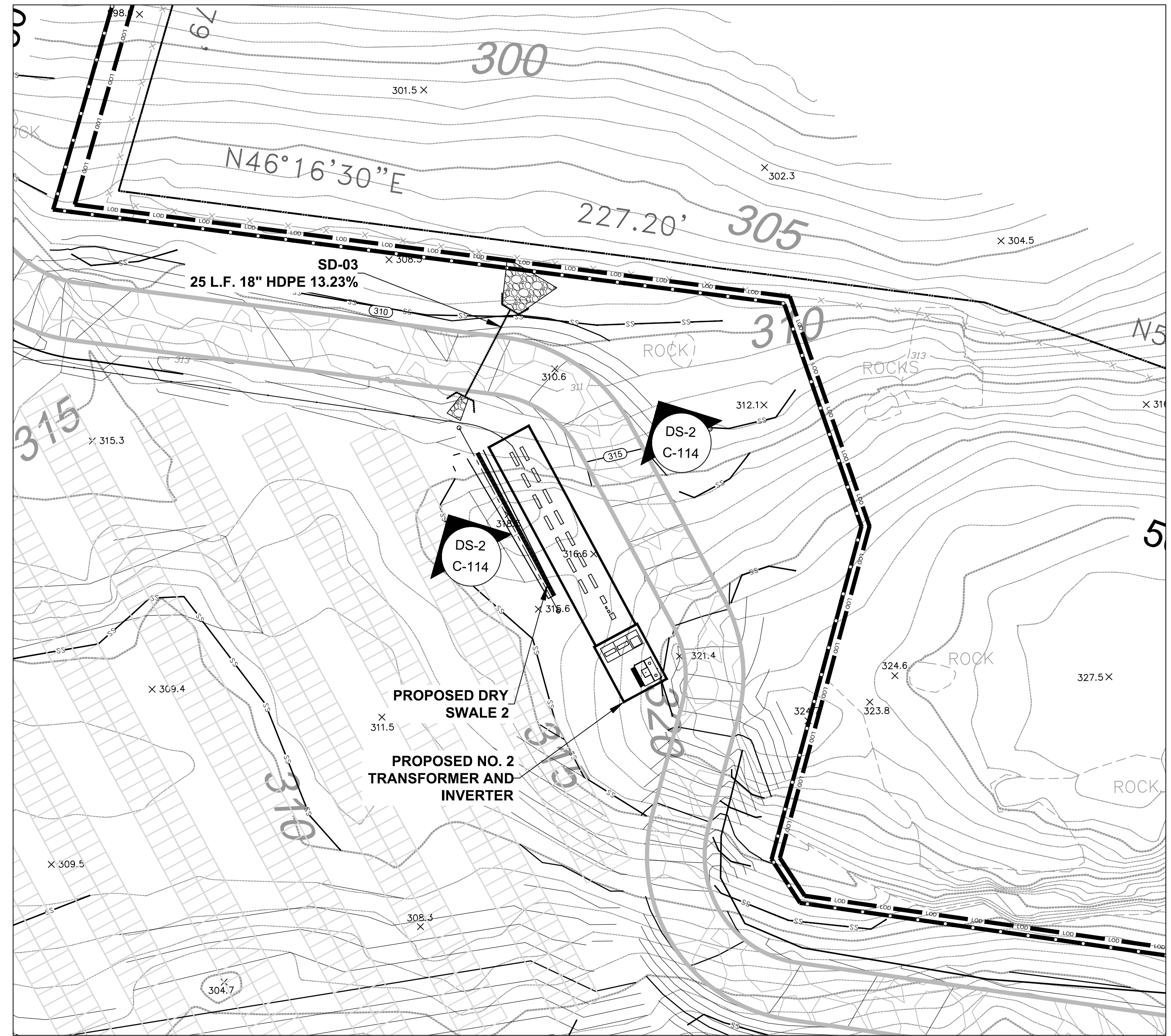
Date:
AUGUST 30, 2022

Sheet:
BIO-AREA 2B & 3A - PROFILE

Drawing No:
C-112



DRY SWALE 1



DRY SWALE 2

LEGEND:

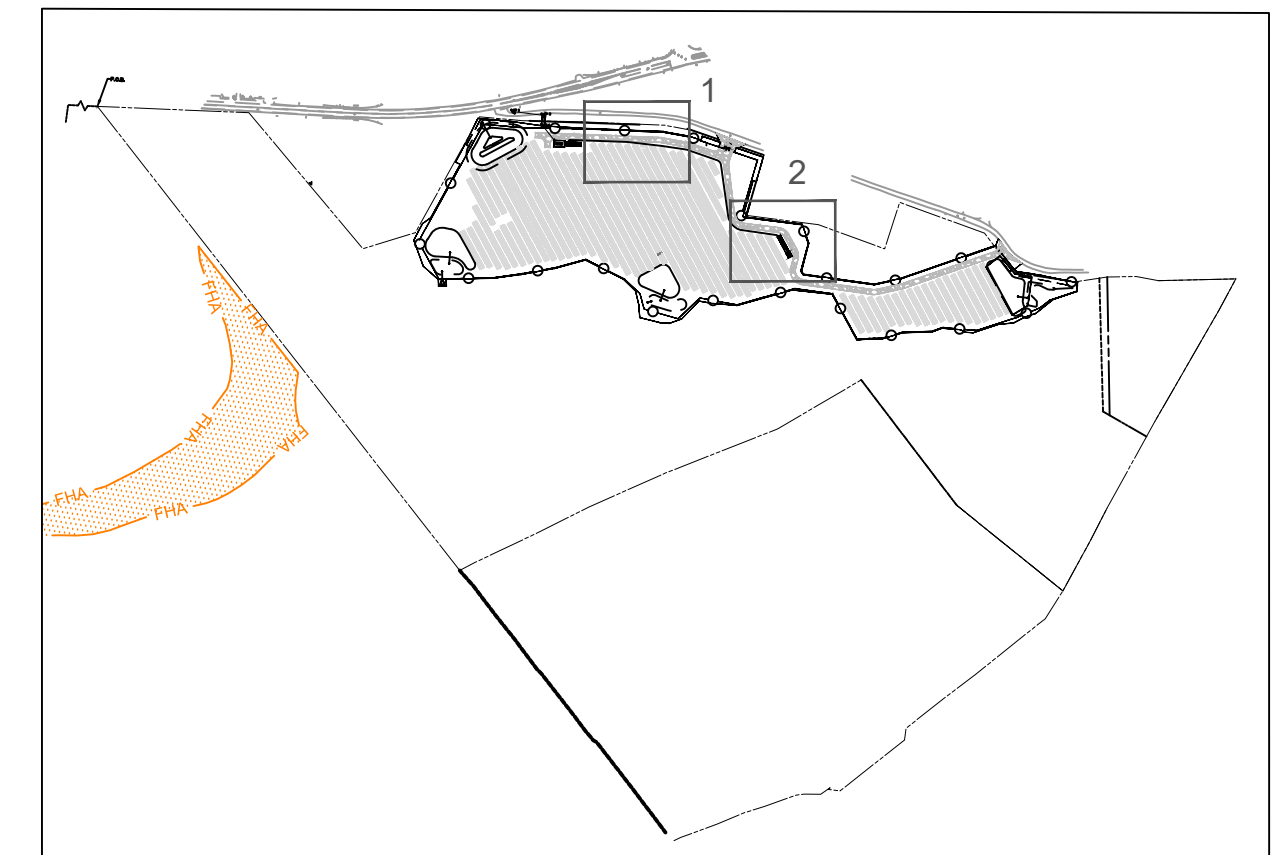
- 420 --- EXISTING MAJOR CONTOUR (FEET)
- 418 --- EXISTING MINOR CONTOUR (FEET)
- --- PARCEL LINE
- --- PROPERTY SETBACK
- LOD --- LOD --- LIMIT OF DISTURBANCE
- ○ PROPOSED PERIMETER FENCE
- 250 --- PROPOSED MAJOR CONTOUR (FEET)
- --- PROPOSED MINOR CONTOUR (FEET)
- --- 100-FOOT NYSDEC ADJACENT AREA
- --- 50-FOOT NYSDEC ADJACENT STREAM BUFFER
- --- 100-FOOT NYSDEC ADJACENT STREAM BUFFER
- --- STONE WALL
- --- TREE LINE
- --- TRAIL
- ○ ROCKS
- --- DELINEATED STREAM LINE
- --- DELINEATED WETLAND
- --- DELINEATED SURFACE WATER
- --- 15' WIDE ACCESS ROAD

MAP REFERENCES:

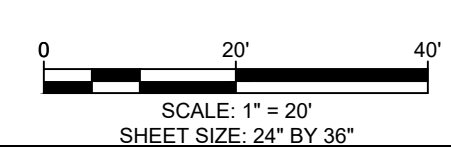
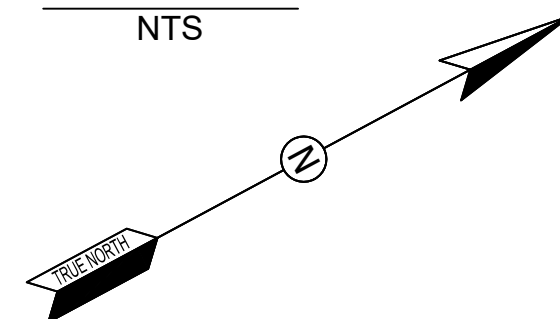
1. SURVEY COMPLETED BY LAND DESIGN ASSOCIATES ENGINEERING, SURVEYING AND LAND ARCHITECTURE D.P.C OF HAUPPAGE, NEW YORK DATED MAY 29, 2021.
2. THE PROJECT HORIZONTAL COORDINATES SYSTEM IS BASED ON NAD83 NEW YORK STATE PLANE (US SURVEY FEET, EAST ZONE, NY83-EF). ELEVATIONS ARE BASED ON NAVD88 (US SURVEY FEET).

GENERAL NOTES:

1. LOCATIONS AND DIMENSIONS OF PHYSICAL FEATURES AND PROPERTY BOUNDARIES ARE APPROXIMATE.
2. THE PROJECT SHALL BE DESIGNED IN COMPLIANCE WITH ALL APPLICABLE CODES, STANDARDS, AND REQUIREMENTS, INCLUDING BUT NOT LIMITED TO:
 - TOWN OF YORKTOWN CODES
 - 2020 FIRE CODE OF NEW YORK STATE (FCNYS 2020)
 - 2020 BUILDING CODE OF NEW YORK STATE (BCNYS 2020)
 - 2019 ENERGY STORAGE SYSTEM SUPPLEMENT - NEW YORK STATE
 - 2018 INTERNATIONAL BUILDING CODE (IBC 2018)
 - NATIONAL ELECTRICAL CODE - NFPA 70
 - NATIONAL ELECTRICAL SAFETY CODE - IEEE C2-2017
 - ANSI/UL STANDARD FOR ENERGY STORAGE SYSTEMS AND EQUIPMENT - STANDARD 9540
 - STANDARD FOR THE INSTALLATION OF STATIONARY ENERGY STORAGE SYSTEMS - NFPA 855
 - BUILDING CODE REQUIREMENTS FOR STRUCTURAL CONCRETE - ACI 318-14
3. SEE DRAWING NO. D-103 DETAIL SHEET 3 FOR DRY SWALE SECTION DETAIL.



KEY PLAN
NTS



NOTE:
UNDER NEW YORK STATE EDUCATION LAW ARTICLE 145 (ENGINEERING), SECTION 7209 (2), IT IS A VIOLATION FOR ANY PERSON, UNLESS ACTING UNDER THE DIRECTION OF A LICENSED PROFESSIONAL ENGINEER, TO ALTER THIS DOCUMENT.

NOTE: THESE PLANS ARE ACCOMPANIED BY SUPPLEMENTAL DOCUMENTS. THESE DOCUMENTS ARE INTERRELATED AND ARE INTENDED TO BE USED TOGETHER. THESE DOCUMENTS ARE INTENDED TO BE USED FOR LOCAL APPROVAL PURPOSES ONLY.
NOT FOR CONSTRUCTION



Revisions:

No.	Date:
1	SEPTEMBER 21, 2022
2	NOVEMBER 17, 2022
3	MAY 10, 2023

Drawn by:
A. REXROAT

Checked by:
S. MEERSMA

Approved by:
C. DUNCAN

**SCS DELL 014136 YORKTOWN, LLC
DELL AVENUE SOLAR FARM
FIXED-TILT GROUND MOUNT SOLAR ENERGY SYSTEM
DELL AVENUE, YORKTOWN, NEW YORK 10514**

Contract No:
431302

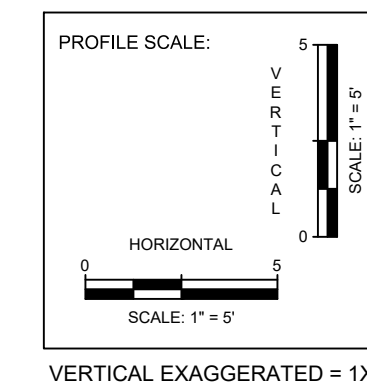
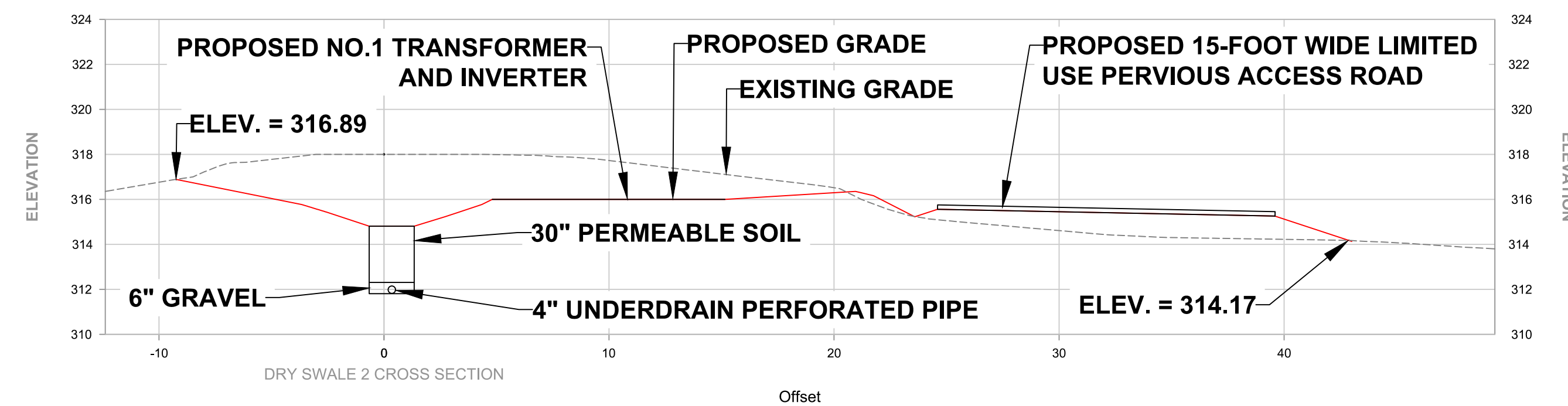
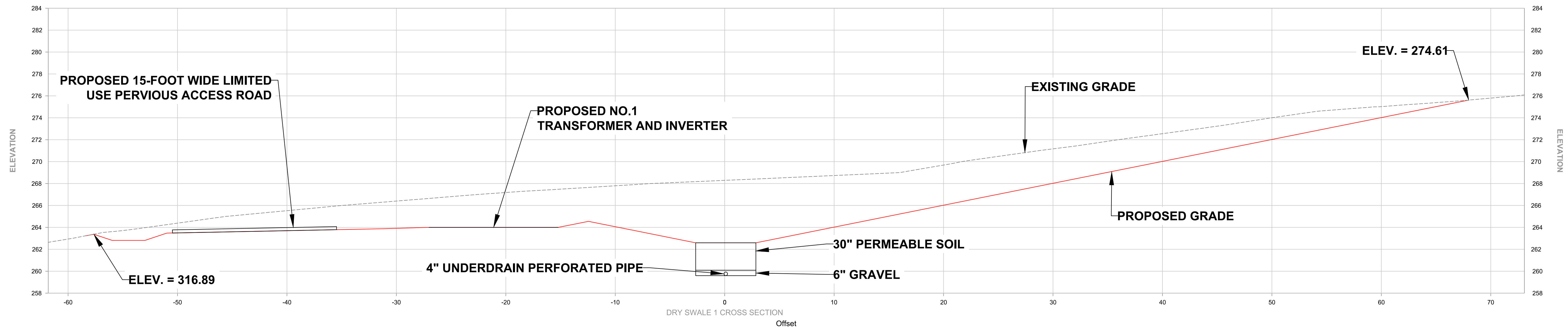
Scale:
AS SHOWN

Date:
AUGUST 30, 2022

Sheet:
DRY SWALE 1 & 2 - PLAN

Drawing No:
C-113

C-113



NOTE: UNDER NEW YORK STATE EDUCATION LAW ARTICLE 145 (ENGINEERING), SECTION 7209 (2), IT IS A VIOLATION FOR ANY PERSON, UNLESS ACTING UNDER THE DIRECTION OF A LICENSED PROFESSIONAL ENGINEER, TO ALTER THIS DOCUMENT.

NOTE: THESE PLANS ARE ACCOMPANIED BY SUPPLEMENTAL DOCUMENTS. THESE DOCUMENTS ARE INTERRELATED AND ARE INTENDED TO BE USED TOGETHER. THESE DOCUMENTS ARE INTENDED TO BE USED FOR LOCAL APPROVAL PURPOSES ONLY.
NOT FOR CONSTRUCTION



1430 Broadway, 10th Floor
New York, NY 10018
Phone: 212.221.7822
www.trccompanies.com
TRC Project No: 431302.0000.0005



Sol Systems, LLC
1101 Connecticut Avenue NW
2nd Floor
Washington, DC 20036

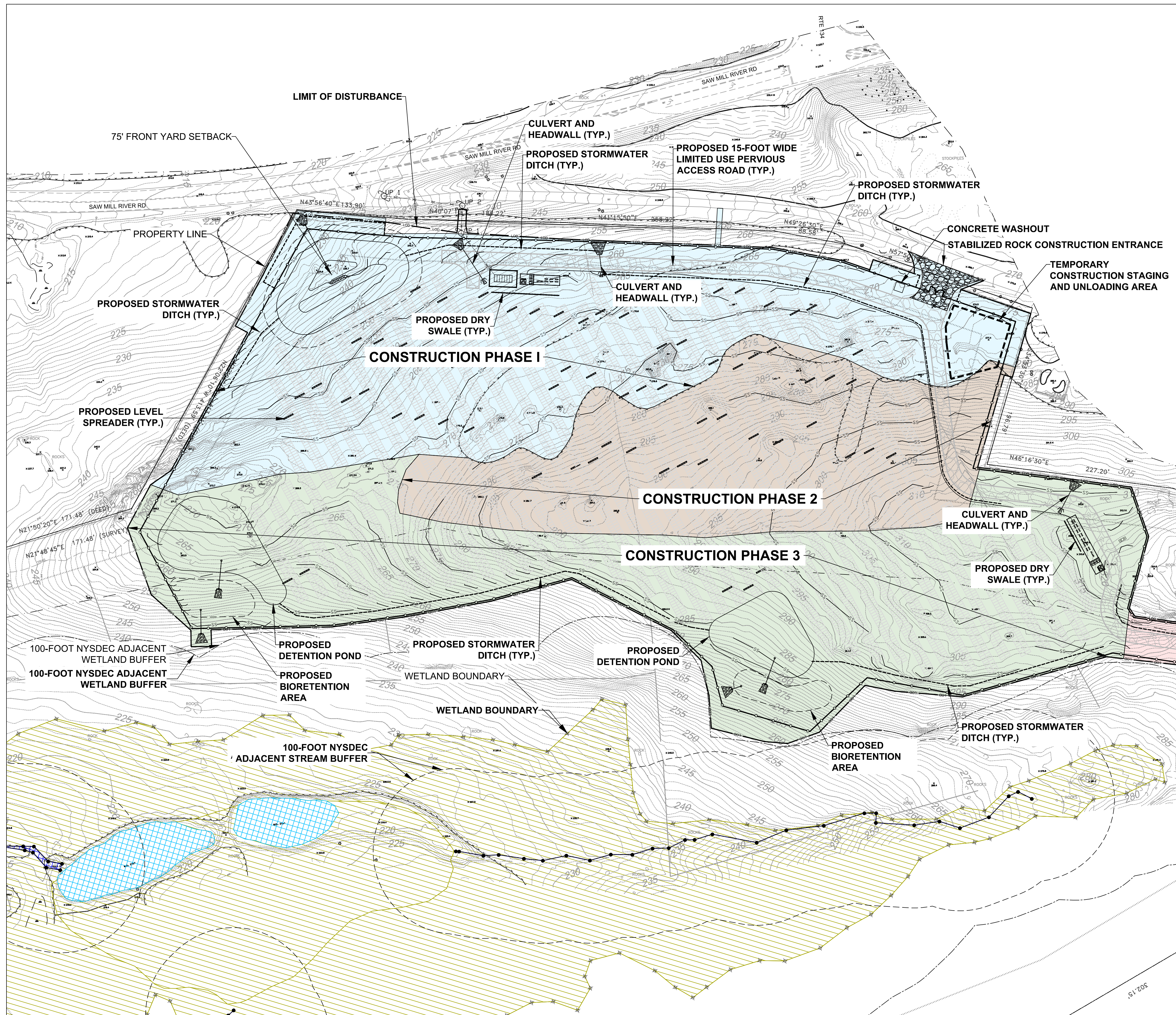


Revisions:	
No.	Date:
1	SEPTEMBER 21, 2022
2	NOVEMBER 17, 2022
3	MAY 10, 2023

Drawn by:
A. REXROAT
Checked by:
S. MEERSMA
Approved by:
C. DUNCAN

SCS DELL 014136 YORKTOWN, LLC
DELL AVENUE SOLAR FARM
FIXED-TILT GROUND MOUNT SOLAR ENERGY SYSTEM
DELL AVENUE, YORKTOWN, NEW YORK 10514

Contract No:
431302
Scale:
AS SHOWN
Date:
AUGUST 30, 2022
Sheet:
DRY SWALE 1 & 2 - PROFILE
Drawing No:
C-114

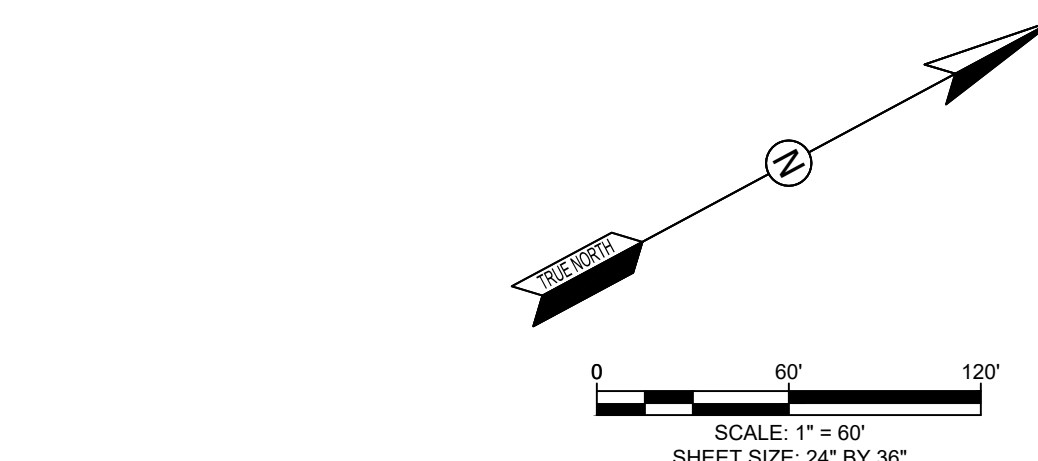
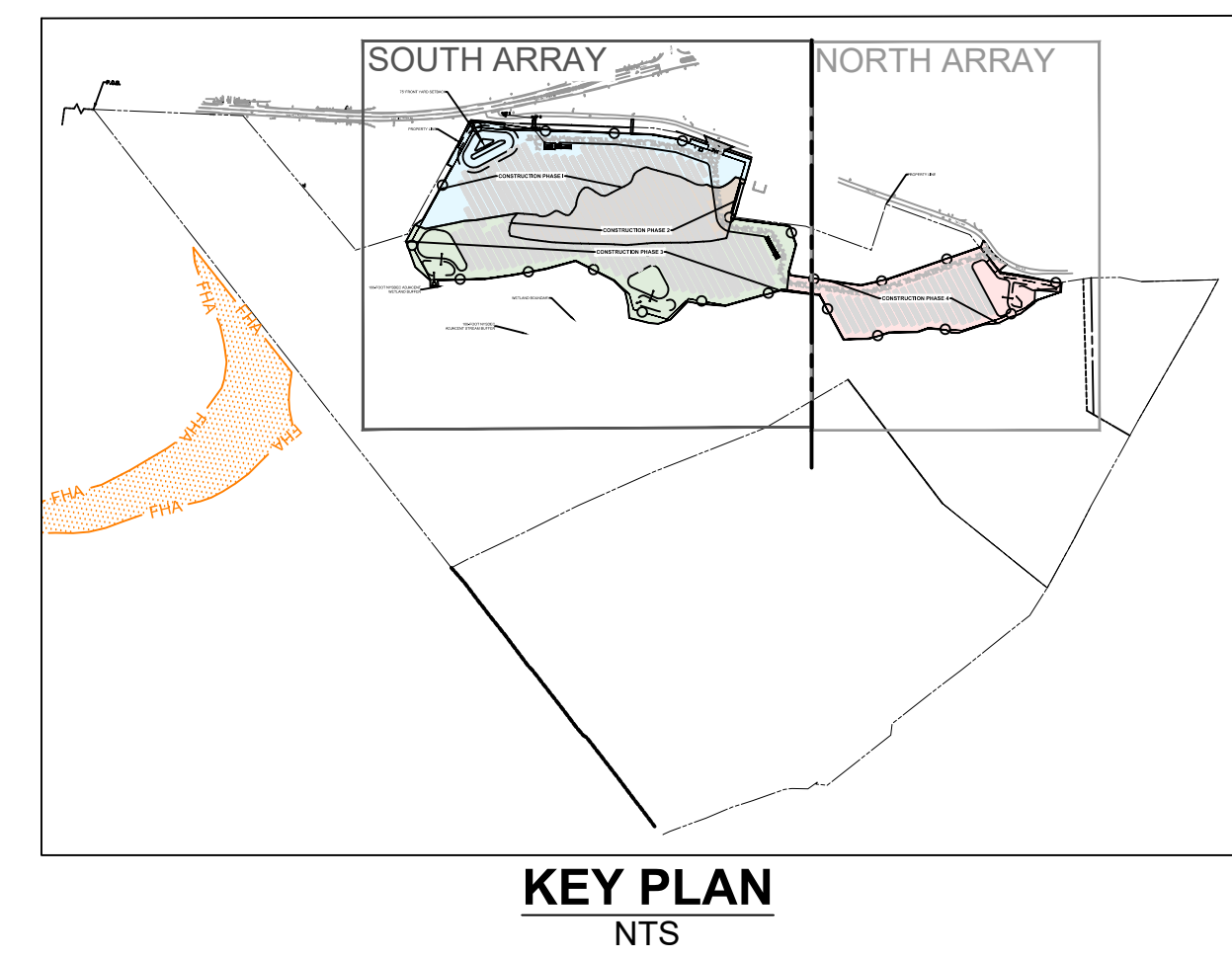


LEGEND:

--- 420 ---	EXISTING MAJOR CONTOUR (FEET)
--- 418 ---	EXISTING MINOR CONTOUR (FEET)
---	PARCEL LINE
---	PROPERTY SETBACK
---	LIMIT OF DISTURBANCE
---	PROPOSED PERIMETER FENCE
---	100-FOOT NYSDEC ADJACENT AREA
---	50-FOOT NYSDEC ADJACENT STREAM BUFFER
---	100-FOOT NYSDEC ADJACENT STREAM BUFFER
---	STONE WALL
---	TREE LINE
---	TRAIL
---	ROCKS
---	DELINEATED STREAM LINE
---	DELINEATED WETLAND
---	DELINEATED SURFACE WATER
---	15' WIDE ACCESS ROAD
---	STABILIZED CONSTRUCTION ENTRANCE
---	TEMPORARY CONSTRUCTION STAGING AREA
---	TEMPORARY COMPOST FILTER SOCK
---	CONSTRUCTION PHASE 1 (194,970 SF / 4.5 ACRES)
---	CONSTRUCTION PHASE 2 (112,874 SF / 2.6 ACRES)
---	CONSTRUCTION PHASE 3 (208,116 SF / 4.8 ACRES)
---	CONSTRUCTION PHASE 4 (132,584 SF / 3.0 ACRES)

- MAP REFERENCES:**
1. SURVEY COMPLETED BY LAND DESIGN ASSOCIATES ENGINEERING, SURVEYING AND LAND ARCHITECTURE D.P.C OF HAUPPAGE, NEW YORK DATED MAY 29, 2021.
 2. THE PROJECT HORIZONTAL COORDINATES SYSTEM IS BASED ON NAD83 NEW YORK STATE PLANE (US SURVEY FEET, EAST ZONE, NY83-EF). ELEVATIONS ARE BASED ON NAVD88 (US SURVEY FEET).

- GENERAL NOTES:**
1. LOCATIONS AND DIMENSIONS OF PHYSICAL FEATURES AND PROPERTY BOUNDARIES ARE APPROXIMATE.
 2. THE PROJECT SHALL BE DESIGNED IN COMPLIANCE WITH ALL APPLICABLE CODES, STANDARDS, AND REQUIREMENTS, INCLUDING BUT NOT LIMITED TO:
 - TOWN OF YORKTOWN CODES
 - 2020 FIRE CODE OF NEW YORK STATE (FCNYS 2020)
 - 2020 BUILDING CODE OF NEW YORK STATE (BCNYS 2020)
 - 2019 ENERGY STORAGE SYSTEM SUPPLEMENT - NEW YORK STATE
 - 2018 INTERNATIONAL BUILDING CODE (IBC 2018)
 - NATIONAL ELECTRICAL CODE - NFPA 70
 - NATIONAL ELECTRICAL SAFETY CODE - IEEE C2-2017
 - ANSI/UL STANDARD FOR ENERGY STORAGE SYSTEMS AND EQUIPMENT - STANDARD 9540
 - STANDARD FOR THE INSTALLATION OF STATIONARY ENERGY STORAGE SYSTEMS - NFPA 855
 - BUILDING CODE REQUIREMENTS FOR STRUCTURAL CONCRETE - ACI 318-14



NOTE: UNDER NEW YORK STATE EDUCATION LAW ARTICLE 145 (ENGINEERING), SECTION 7209 (2), IT IS A VIOLATION FOR ANY PERSON, UNLESS ACTING UNDER THE DIRECTION OF A LICENSED PROFESSIONAL ENGINEER, TO ALTER THIS DOCUMENT.

NOTE: THESE PLANS ARE ACCOMPANIED BY SUPPLEMENTAL DOCUMENTS. THESE DOCUMENTS ARE INTERRELATED AND ARE INTENDED TO BE USED TOGETHER. THESE DOCUMENTS ARE INTENDED TO BE USED FOR LOCAL APPROVAL PURPOSES ONLY.
NOT FOR CONSTRUCTION



Revisions:

No.	Date:
1	SEPTEMBER 21, 2022
2	NOVEMBER 17, 2022
3	MAY 10, 2023

Drawn by:
A. REXROAT

Checked by:
S. MEERSMA

Approved by:
C. DUNCAN

SCS DELL 014136 YORKTOWN, LLC
DELL AVENUE SOLAR FARM
FIXED-TILT GROUND MOUNT SOLAR ENERGY SYSTEM
DELL AVENUE, YORKTOWN, NEW YORK 10514

Contract No:
431302

Scale:
AS SHOWN

Date:
AUGUST 30, 2022

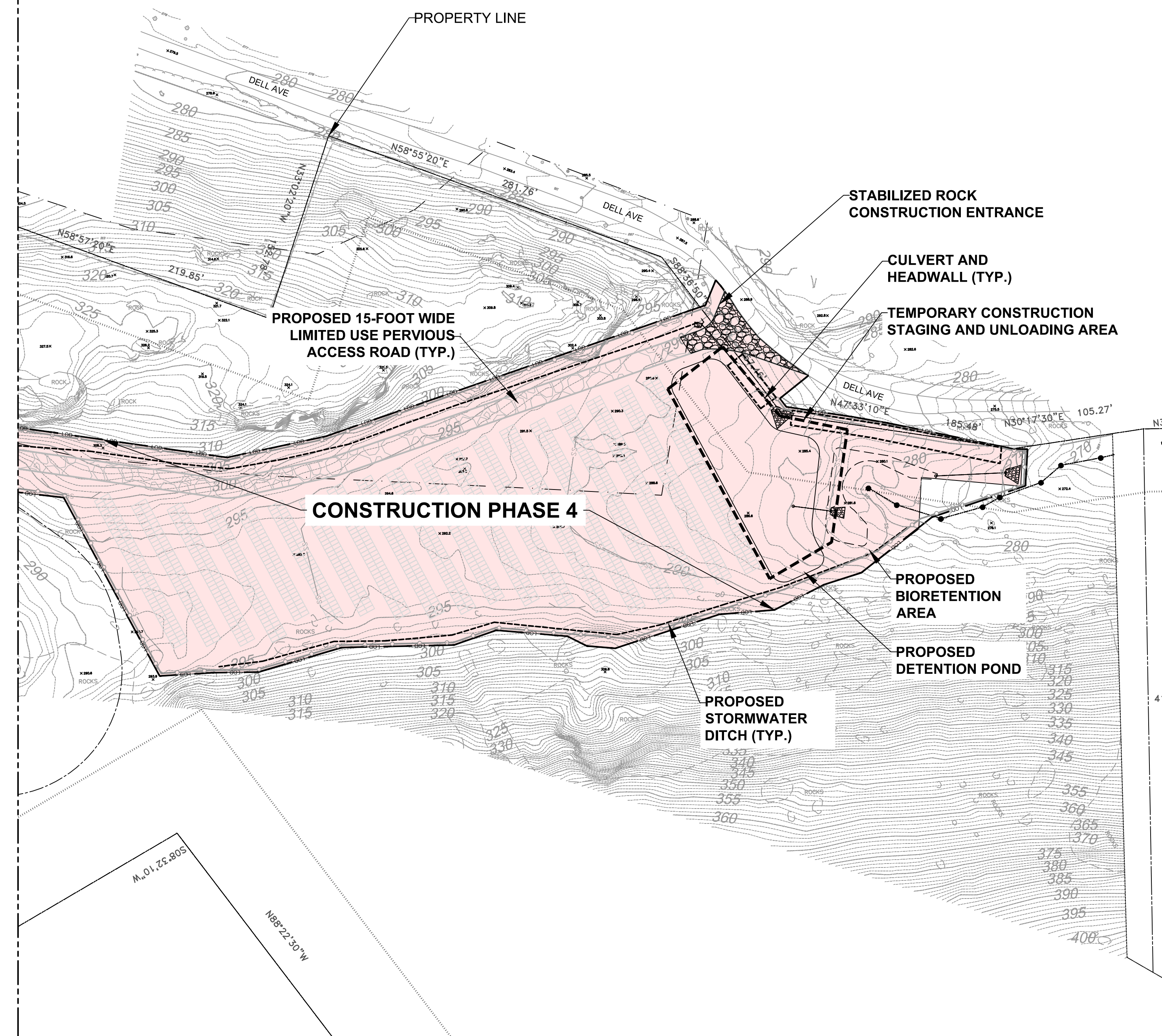
Sheet:
E&S PLAN - SOUTH

Drawing No:
C-115

1430 Broadway, 10th Floor
New York, NY 10018
Phone: 212.267.1822
www.trccompanies.com
TRC Project No: 431302.0000.0005

Sol Systems, LLC
1101 Connecticut Avenue NW
2nd Floor
Washington, DC 20036

REFER TO DRAWING C-107



LEGEND:

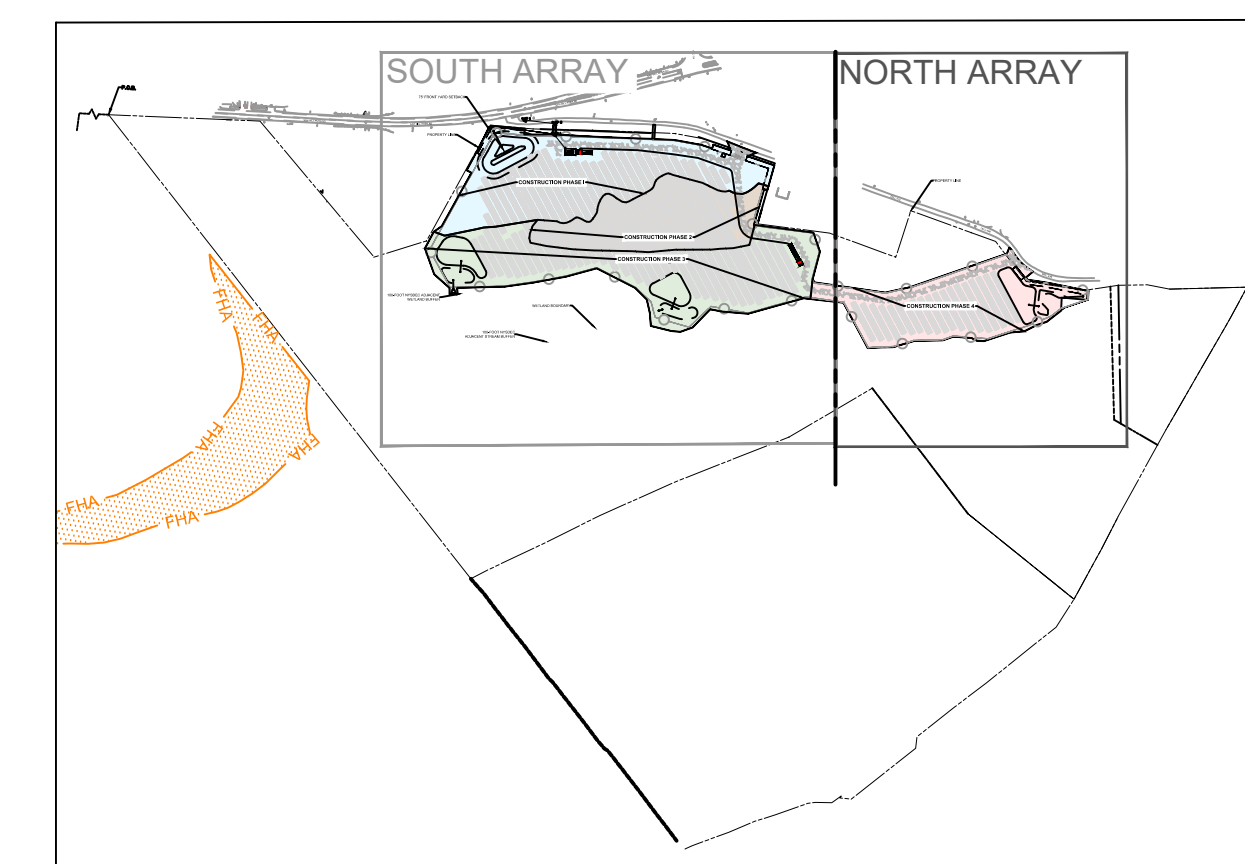
--- 420 ---	EXISTING MAJOR CONTOUR (FEET)
--- 418 ---	EXISTING MINOR CONTOUR (FEET)
---	PARCEL LINE
---	PROPERTY SETBACK
--- LOD --- LOD ---	LIMIT OF DISTURBANCE
○ ○ ○	PROPOSED PERIMETER FENCE
---	100-FOOT NYSDEC ADJACENT AREA
---	50-FOOT NYSDEC ADJACENT STREAM BUFFER
---	100-FOOT NYSDEC ADJACENT STREAM BUFFER
---	STONE WALL
---	TREE LINE
---	TRAIL
○ ROCK	ROCKS
▨	DELINEATED STREAM LINE
▨	DELINEATED WETLAND
▨	DELINEATED SURFACE WATER
▨	15' WIDE ACCESS ROAD
▨	STABILIZED CONSTRUCTION ENTRANCE
▨	TEMPORARY CONSTRUCTION STAGING AREA
▨	TEMPORARY COMPOST FILTER SOCK
▨	CONSTRUCTION PHASE 1 (194,970 SF / 4.5 ACRES)
▨	CONSTRUCTION PHASE 2 (112,874 SF / 2.6 ACRES)
▨	CONSTRUCTION PHASE 3 (208,116 SF / 4.8 ACRES)
▨	CONSTRUCTION PHASE 4 (132,584 SF / 3.0 ACRES)

MAP REFERENCES:

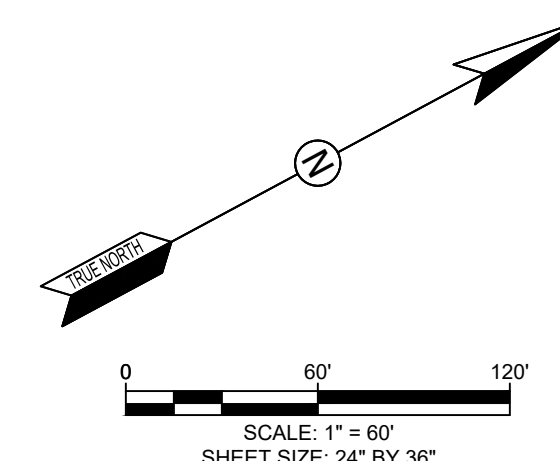
1. SURVEY COMPLETED BY LAND DESIGN ASSOCIATES ENGINEERING, SURVEYING AND LAND ARCHITECTURE D.P.C OF HAUPPAGE, NEW YORK DATED MAY 29, 2021.
2. THE PROJECT HORIZONTAL COORDINATES SYSTEM IS BASED ON NAD83 NEW YORK STATE PLANE (US SURVEY FEET, EAST ZONE, NY83-EF). ELEVATIONS ARE BASED ON NAVD88 (US SURVEY FEET).

GENERAL NOTES:

1. LOCATIONS AND DIMENSIONS OF PHYSICAL FEATURES AND PROPERTY BOUNDARIES ARE APPROXIMATE.
2. THE PROJECT SHALL BE DESIGNED IN COMPLIANCE WITH ALL APPLICABLE CODES, STANDARDS, AND REQUIREMENTS, INCLUDING BUT NOT LIMITED TO:
 - TOWN OF YORKTOWN CODES
 - 2020 FIRE CODE OF NEW YORK STATE (FCNYS 2020)
 - 2020 BUILDING CODE OF NEW YORK STATE (BCNYS 2020)
 - 2019 ENERGY STORAGE SYSTEM SUPPLEMENT - NEW YORK STATE
 - 2018 INTERNATIONAL BUILDING CODE (IBC 2018)
 - NATIONAL ELECTRICAL CODE - NFPA 70
 - NATIONAL ELECTRICAL SAFETY CODE - IEEE C2-2017
 - ANSI/UL STANDARD FOR ENERGY STORAGE SYSTEMS AND EQUIPMENT - STANDARD 9540
 - STANDARD FOR THE INSTALLATION OF STATIONARY ENERGY STORAGE SYSTEMS - NFPA 855
 - BUILDING CODE REQUIREMENTS FOR STRUCTURAL CONCRETE - ACI 318-14



KEY PLAN
NTS



NOTE: UNDER NEW YORK STATE EDUCATION LAW ARTICLE 145 (ENGINEERING), SECTION 7209 (2), IT IS A VIOLATION FOR ANY PERSON, UNLESS ACTING UNDER THE DIRECTION OF A LICENSED PROFESSIONAL ENGINEER, TO ALTER THIS DOCUMENT.

NOTE: THESE PLANS ARE ACCOMPANIED BY SUPPLEMENTAL DOCUMENTS. THESE DOCUMENTS ARE INTERRELATED AND ARE INTENDED TO BE USED TOGETHER. THESE DOCUMENTS ARE INTENDED TO BE USED FOR LOCAL APPROVAL PURPOSES ONLY.
NOT FOR CONSTRUCTION



Revisions:

No.	Date:
1	SEPTEMBER 21, 2022
2	NOVEMBER 17, 2022
3	MAY 10, 2023

Drawn by:
A. REXROAT

Checked by:
S. MEERSMA

Approved by:
C. DUNCAN

**SCS DELL 014136 YORKTOWN, LLC
DELL AVENUE SOLAR FARM
FIXED-TILT GROUND MOUNT SOLAR ENERGY SYSTEM
DELL AVENUE, YORKTOWN, NEW YORK 10514**

Contract No:
431302

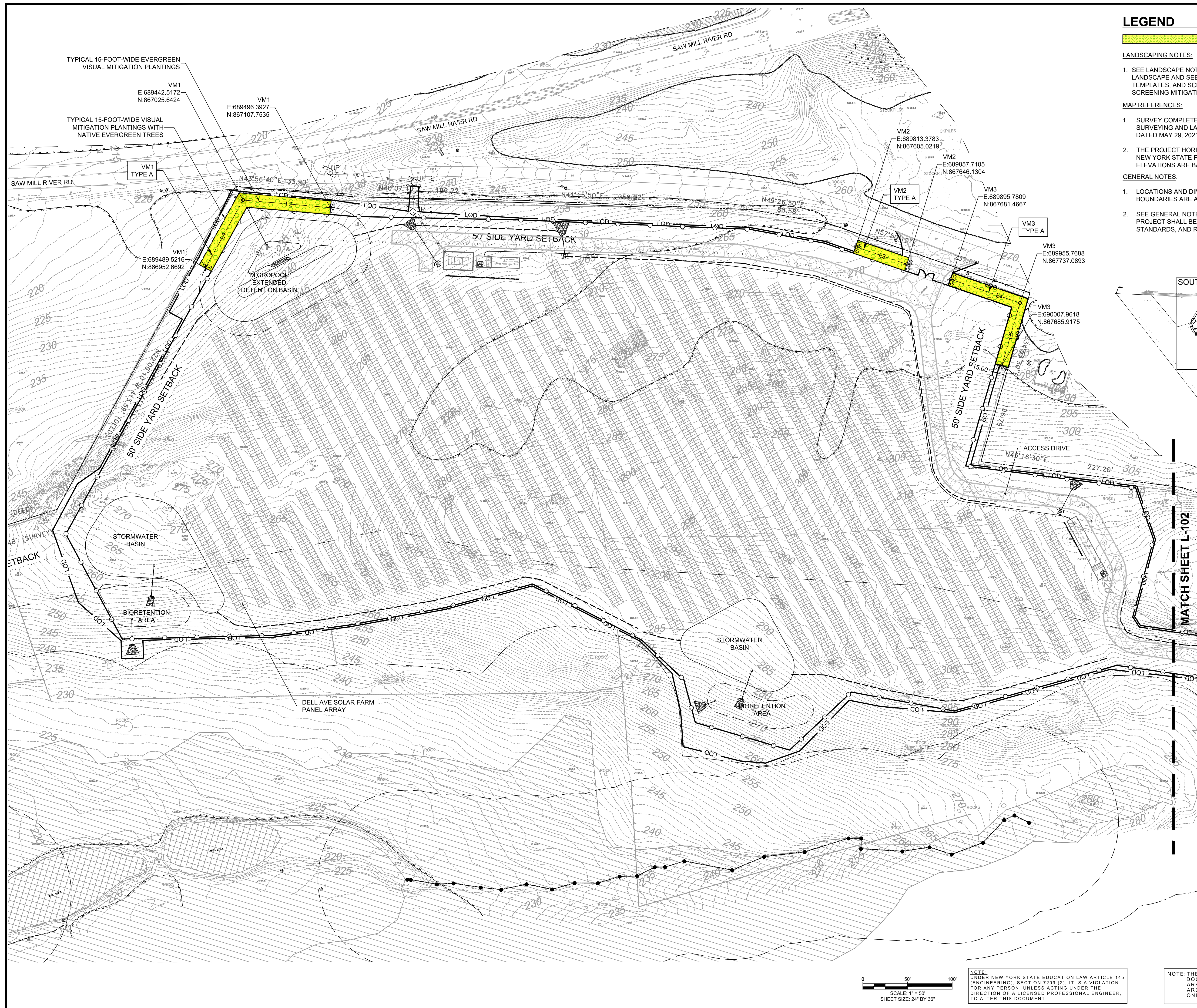
Scale:
AS SHOWN

Date:
AUGUST 30, 2022

Sheet:
E&S PLAN - NORTH

Drawing No:
C-116

TRC Project No: 431302.0000.0005



LEGEND

PROPOSED LANDSCAPING FEATURES

VISUAL MITIGATION TYPE A:
VM-1, VM-2, AND VM-3

LANDSCAPING NOTES:

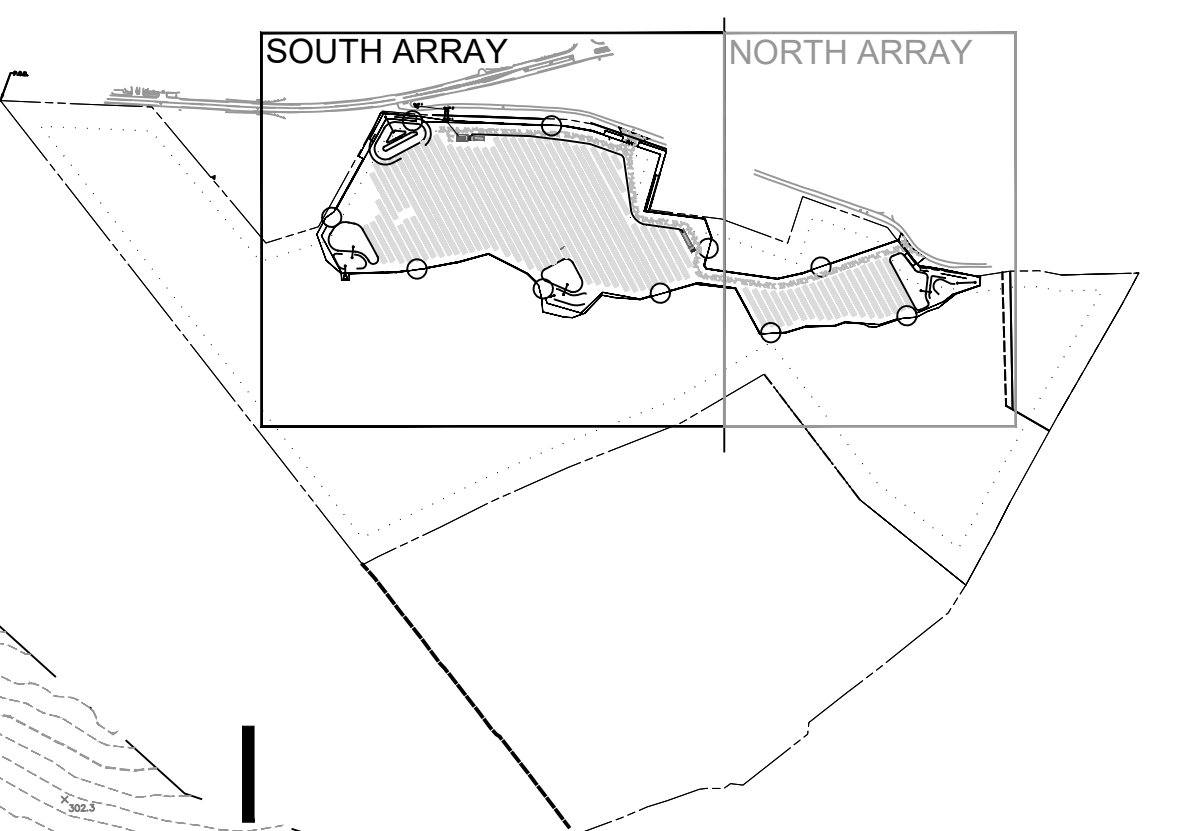
- SEE LANDSCAPE NOTES & DETAILS SHEETS L-103 TO L-104 FOR GENERAL LANDSCAPE AND SEEDING NOTES; SOLAR SEED MIX; PLANTING DETAILS, TEMPLATES, AND SCHEDULES; AND COORDINATE VEGETATIVE BUFFER / SCREENING MITIGATION TABLES.

MAP REFERENCES:

- SURVEY COMPLETED BY LAND DESIGN ASSOCIATES ENGINEERING, SURVEYING AND LAND ARCHITECTURE D.P.C OF HAUPPAGE, NEW YORK DATED MAY 29, 2021.
- THE PROJECT HORIZONTAL COORDINATE SYSTEM IS BASED ON NAD83 NEW YORK STATE PLANE (US SURVEY FEET, EAST ZONE, NY83-EF). ELEVATIONS ARE BASED ON NAVD88 (US SURVEY FEET).

GENERAL NOTES:

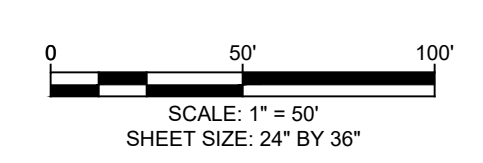
- LOCATIONS AND DIMENSIONS OF PHYSICAL FEATURES AND PROPERTY BOUNDARIES ARE APPROXIMATE.
- SEE GENERAL NOTES #2, SHEET C-103 (SITE PLAN - SOUTH) THAT THE PROJECT SHALL BE DESIGNED IN COMPLIANCE WITH ALL APPLICABLE CODES, STANDARDS, AND REQUIREMENTS.



KEY PLAN
NTS

LEGEND:

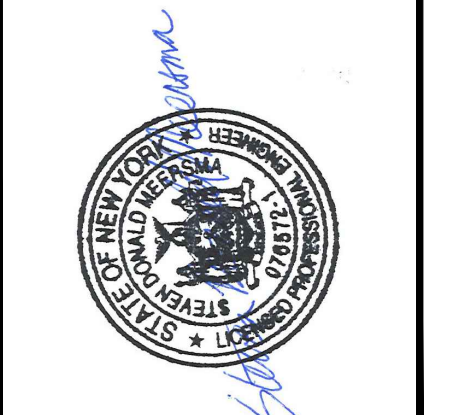
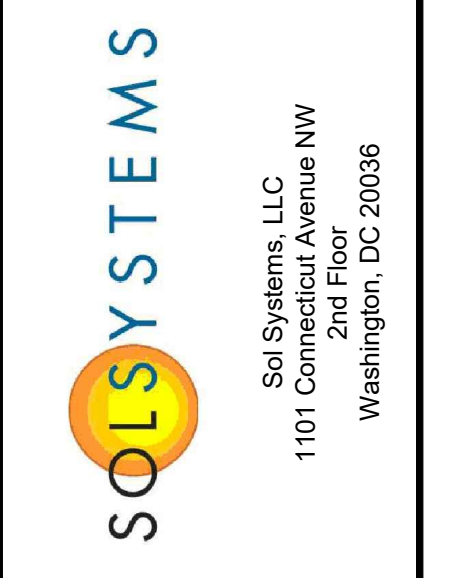
- 420 --- EXISTING MAJOR CONTOUR (FEET)
- 418 --- EXISTING MINOR CONTOUR (FEET)
- PARCEL LINE
- LOD --- LIMIT OF DISTURBANCE
- PROPOSED PERIMETER FENCE
- 100-FOOT NYSDEC ADJACENT AREA
- 50-FOOT NYSDEC ADJACENT STREAM BUFFER
- 100-FOOT NYSDEC ADJACENT STREAM BUFFER
- STONE WALL
- TREE LINE
- TRAIL
- ROCKS
- DELINEATED STREAM LINE
- DELINEATED WETLAND
- DELINEATED SURFACE WATER
- 15' WIDE ACCESS ROAD



NOTE: UNDER NEW YORK STATE EDUCATION LAW ARTICLE 145 (ENGINEERING), SECTION 2209 (2), IT IS A VIOLATION FOR ANY PERSON, UNLESS ACTING UNDER THE DIRECTION OF A LICENSED PROFESSIONAL ENGINEER, TO ALTER THIS DOCUMENT.

NOTE: THESE PLANS ARE ACCOMPANIED BY SUPPLEMENTAL DOCUMENTS. THESE DOCUMENTS ARE INTERRELATED AND ARE INTENDED TO BE USED TOGETHER. THESE DOCUMENTS ARE INTENDED TO BE USED FOR LOCAL APPROVAL PURPOSES ONLY.

NOT FOR CONSTRUCTION



Revisions:

No.	Date:
1	SEPTEMBER 21, 2022
2	MAY 10, 2023

Drawn by:
A. REXROAT

Checked by:
S. MEERSMA

Approved by:
C. DUNCAN

**SCS DELL 014136 YORKTOWN, LLC
DELL AVENUE SOLAR FARM
FIXED-TILT GROUND MOUNT SOLAR ENERGY SYSTEM
DELL AVENUE, YORKTOWN, NEW YORK 10514**

Contract No:
431302

Scale:
AS SHOWN

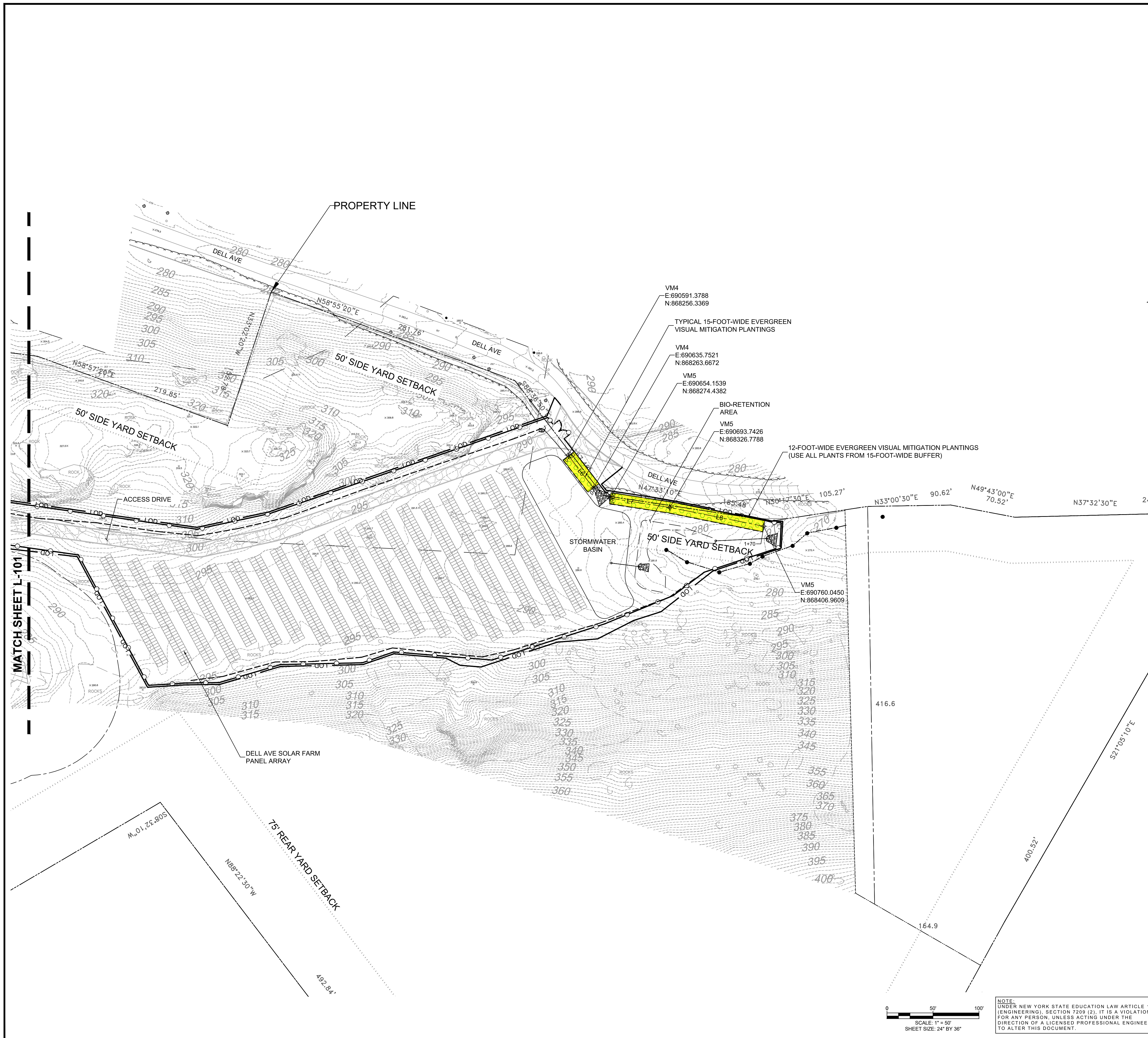
Date:
AUGUST 30, 2022

Sheet:
LANDSCAPE PLAN SOUTH

Drawing No:
L-101

1430 Broadway, 10th Floor
New York, NY 10018
Phone: 212.221.1822
www.trccompanies.com
TRC Project No: 431302.0000.0005

Sol Systems, LLC
1101 Connecticut Avenue NW
2nd Floor
Washington, DC 20036



LEGEND PROPOSED LANDSCAPING FEATURES

VISUAL MITIGATION TYPE A: VM-4

LANDSCAPING NOTES:

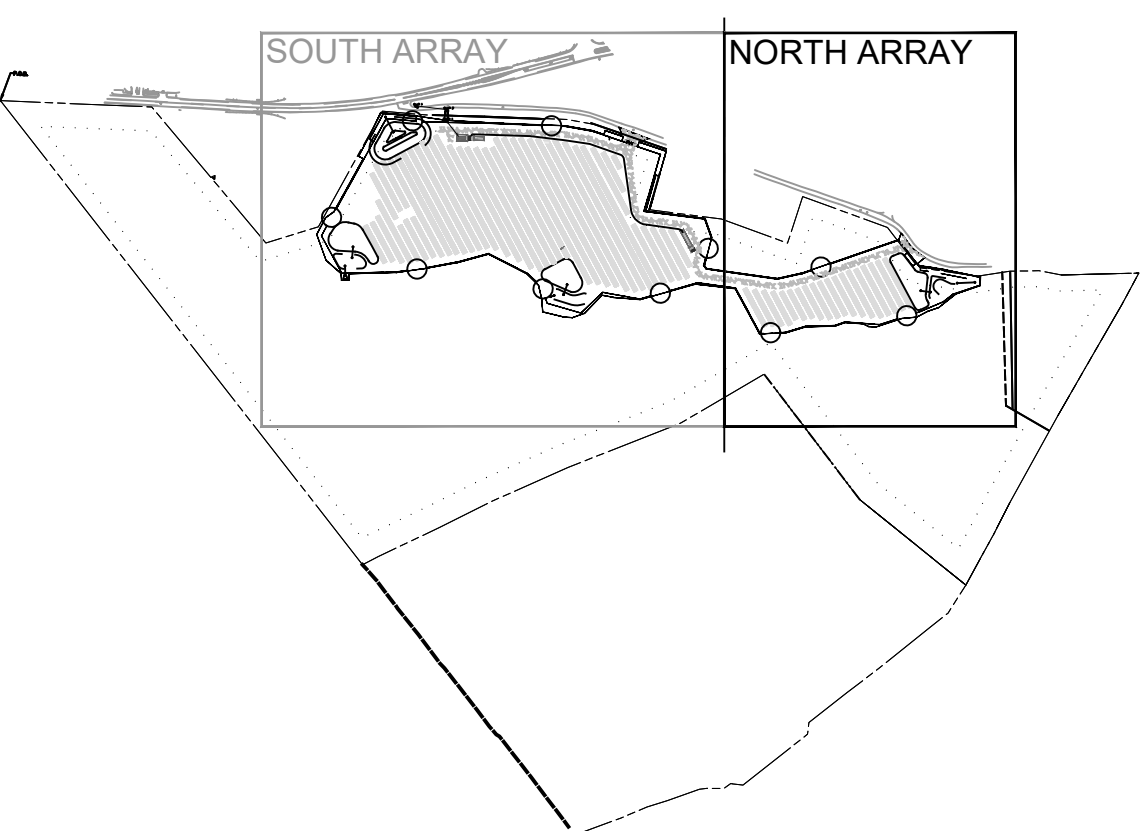
- SEE LANDSCAPE NOTES & DETAILS SHEETS L-103 TO L-104 FOR GENERAL LANDSCAPE AND SEEDING NOTES; SOLAR SEED MIX; PLANTING DETAILS, TEMPLATES, AND SCHEDULES; AND COORDINATE VEGETATIVE BUFFER / SCREENING MITIGATION TABLES.

MAP REFERENCES:

- SURVEY COMPLETED BY LAND DESIGN ASSOCIATES ENGINEERING, SURVEYING AND LAND ARCHITECTURE D.P.C OF HAUPPAGE, NEW YORK DATED MAY 29, 2021.
- THE PROJECT HORIZONTAL COORDINATES SYSTEM IS BASED ON NAD83 NEW YORK STATE PLANE (US SURVEY FEET, EAST ZONE, NY83-EF). ELEVATIONS ARE BASED ON NAVD88 (US SURVEY FEET).

GENERAL NOTES:

- LOCATIONS AND DIMENSIONS OF PHYSICAL FEATURES AND PROPERTY BOUNDARIES ARE APPROXIMATE.
- SEE GENERAL NOTES #2, SHEET C-103 (SITE PLAN - SOUTH) THAT THE PROJECT SHALL BE DESIGNED IN COMPLIANCE WITH ALL APPLICABLE CODES, STANDARDS, AND REQUIREMENTS.



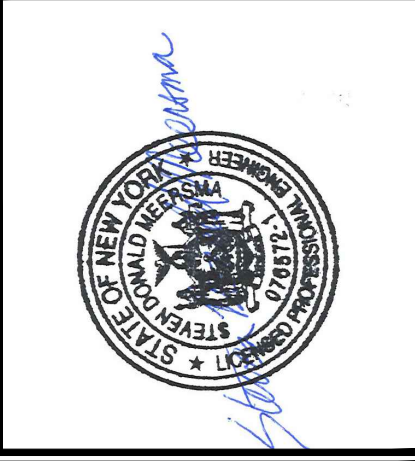
LEGEND:

- 420 --- EXISTING MAJOR CONTOUR (FEET)
- 418 --- EXISTING MINOR CONTOUR (FEET)
- PARCEL LINE
- LOD --- LIMIT OF DISTURBANCE
- PROPOSED PERIMETER FENCE
- 100-FOOT NYSDEC ADJACENT AREA BUFFER
- 50-FOOT NYSDEC ADJACENT STREAM BUFFER
- 100-FOOT NYSDEC ADJACENT STREAM BUFFER
- STONE WALL
- TREE LINE
- TRAIL
- ROCK
- DELINEATED STREAM LINE
- DELINEATED WETLAND
- DELINEATED SURFACE WATER
- 15' WIDE ACCESS ROAD

NOTE: UNDER NEW YORK STATE EDUCATION LAW ARTICLE 145 (ENGINEERING), SECTION 2209 (2), IT IS A VIOLATION FOR ANY PERSON, UNLESS ACTING UNDER THE DIRECTION OF A LICENSED PROFESSIONAL ENGINEER, TO ALTER THIS DOCUMENT.

NOTE: THESE PLANS ARE ACCOMPANIED BY SUPPLEMENTAL DOCUMENTS. THESE DOCUMENTS ARE INTERRELATED AND ARE INTENDED TO BE USED TOGETHER. THESE DOCUMENTS ARE INTENDED TO BE USED FOR LOCAL APPROVAL PURPOSES ONLY.

NOT FOR CONSTRUCTION



Revisions:

No.	Date:
1	SEPTEMBER 21, 2022
2	MAY 10, 2023

Drawn by:
A. REXROAT

Checked by:
S. MEERSMA

Approved by:
C. DUNCAN

**SCS DELL 014136 YORKTOWN, LLC
 DELL AVENUE SOLAR FARM
 FIXED-TILT GROUND MOUNT SOLAR ENERGY SYSTEM
 DELL AVENUE, YORKTOWN, NEW YORK 10514**

Contract No:
431302

Scale:
AS SHOWN

Date:
AUGUST 30, 2022

Sheet:
LANDSCAPE PLAN NORTH

Drawing No:
L-102

GENERAL LANDSCAPE AND SEEDING NOTES

- THE LANDSCAPE PLAN AND DETAILS ARE FOR LANDSCAPING INFORMATION ONLY. PLEASE REFER TO THE SITE LAYOUT PLAN, GRADING PLAN AND/OR UTILITIES PLAN FOR ALL OTHER INFORMATION.
- THE CONTRACTOR SHALL MONITOR AND GUARANTEE THAT ALL PLANTS, TREES, AND SHRUBS SHALL BE HEALTHY AND FREE OF DISEASE FOR A PERIOD OF (1) ONE YEAR AFTER SUBSTANTIAL COMPLETION AND ACCEPTANCE BY THE OWNER. CONTRACTOR SHALL REPLACE ANY DEAD OR UNHEALTHY PLANTS AT CONTRACTOR'S EXPENSE. FINAL ACCEPTANCE SHALL BE MADE IF ALL PLANTS MEET THE GUARANTEE REQUIREMENTS INCLUDING MAINTENANCE. MAINTENANCE RESPONSIBILITIES INCLUDE INVASIVE SPECIES MONITORING, REMOVAL, AND SUPPLEMENTATION. MONITORING OF THE PROJECT SITE SHALL OCCUR IN THE SPRING AND THE FALL TO DETERMINE THE PRESENCE OF INVASIVE SPECIES. SHOULD ANY INVASIVE SPECIES BE IDENTIFIED WITHIN THE PROJECT SITE, THE INVASIVE SPECIES SHALL BE REMOVED ACCORDING TO METHODS MOST LIKELY TO BE EFFECTIVE IN CONTROLLING THAT SPECIES AND SUPPLEMENTING ITS REPLACEMENT WITH APPROPRIATE VEGETATION AND SEED MIX IDENTIFIED (AND APPROVED) ON THIS PLAN AND/OR AN APPROVED EQUAL. ADDITIONAL MAINTENANCE RESPONSIBILITIES INCLUDE: APPROVED CULTIVATING, SPRAYING, WEEDING, WATERING, TIGHTENING OF TREE STRAP GUYS, PRUNING, FERTILIZING, MULCHING, AND ANY OTHER OPERATIONS NECESSARY TO MAINTAIN PLANT VIABILITY. MAINTENANCE SHALL BEGIN IMMEDIATELY AFTER PLANTING AND CONTINUE UNTIL 90 DAYS AFTER FINAL ACCEPTANCE. WATERING OF THE LANDSCAPE BUFFER AREAS SHALL BE IMPLEMENTED BY THE USE OF A WATERING TRUCK.
- THE CONTRACTOR SHALL SUPPLY ALL LABOR, PLANTS, APPROVED SEEDING MIX, AND MATERIALS IN QUANTITIES SUFFICIENT TO COMPLETE THE WORK SHOWN ON THE DRAWING(S) AND LISTED IN THE PLANT SCHEDULE(S) AND/OR SEEDING TABLE(S). IN THE EVENT OF A DISCREPANCY BETWEEN QUANTITIES SHOWN IN THE PLANT SCHEDULE AND/OR SEEDING TABLE AND THOSE REQUIRED BY THE DRAWINGS, THE LARGER SHALL APPLY. ALL PLANTS SHALL BE ACCLIMATED BY THE SUPPLY NURSERY TO THE LOCAL HARDINESS ZONE AND BE CERTIFIED THAT THE PLANTING MATERIAL HAS BEEN GROWN FOR A MINIMUM OF (2) TWO YEARS AT THE SOURCE AND OBTAINED WITHIN 200 MILES OF PROJECT SITE UNLESS OTHERWISE APPROVED BY OWNER, CERTIFIED LANDSCAPE INSPECTOR, OR LANDSCAPE ARCHITECT.
- THE LOCATIONS FOR PLANT MATERIAL ARE APPROXIMATE AND ARE SUBJECT TO FIELD ADJUSTMENT DUE TO SLOPE, VEGETATION, AND SITE FACTORS SUCH AS THE LOCATION OF ROCK OUTCROPS. PRIOR TO PLANTING THE CONTRACTOR SHALL ACCURATELY STAKE OUT THE LOCATIONS FOR ALL PLANTS. THE OWNER, CERTIFIED LANDSCAPE INSPECTOR, OR LANDSCAPE ARCHITECT SHALL APPROVE THE FIELD LOCATIONS OR ADJUSTMENTS OF THE PLANT MATERIAL.
- ALL SHRUB MASSING AREAS SHALL BE MULCHED TO A DEPTH OF 2" WITH SHREDDED HARDWOOD BARK MULCH.
- NO PLANT SHALL BE PLACED IN THE GROUND BEFORE ROUGH GRADING HAS BEEN COMPLETED AND APPROVED BY THE OWNER, CERTIFIED LANDSCAPE INSPECTOR, OR LANDSCAPE ARCHITECT. STAKING OF ALL TREES AND SHRUBS SHALL BE COMPLETED PRIOR TO PLANTING FOR APPROVAL BY THE OWNER, CERTIFIED LANDSCAPE INSPECTOR, OR LANDSCAPE ARCHITECT. STAKING OF THE INSTALLED TREE MUST BE COMPLETED THE SAME DAY AS IT IS INSTALLED. ALL TREES SHALL BE STAKED OR GUYED AS PER THE DETAIL. SEE LANDSCAPING PLAN(S) FOR PLANTING DETAILS.
- COORDINATE PLANT MATERIAL LOCATIONS WITH SITE UTILITIES. SEE SITE LAYOUT, GRADING AND/OR UTILITY PLANS FOR STORM, SANITARY, GAS, ELECTRIC, TELEPHONE AND WATER LINES. UTILITY LOCATIONS ARE APPROXIMATE. EXERCISE CARE WHEN DIGGING IN AREAS OF POTENTIAL CONFLICT WITH UNDERGROUND OR OVERHEAD UTILITIES. THE CONTRACTOR IS RESPONSIBLE FOR ANY DAMAGE DUE TO CONTRACTOR'S NEGLIGENCE AND SHALL REPLACE OR REPAIR ANY DAMAGE AT CONTRACTOR'S EXPENSE.
- LANDSCAPE PLANTING PITS MUST BE FREE DRAINING, PAVEMENT, COMPACTED SUBGRADE, AND BLASTED ROCK SHALL BE REMOVED TO A DEPTH OF 2' OR TO A GREATER DEPTH IF REQUIRED BY PLANTING DETAILS OR SPECIFICATIONS. REPLACE SOIL WITH MODERATELY COMPACTED LOAM OR SANDY LOAM FREE FROM STONES AND RUBBISH 1" OR GREATER IN DIAMETER AND ANY OTHER MATERIAL HARMFUL TO PLANT GROWTH AND DEVELOPMENT. PLANTING INSTALLATION SHALL BE AS DETAILED AND CONTAIN PLANTING MIX AS SPECIFIED UNLESS RECOMMENDED OTHERWISE BY SOIL ANALYSIS.

PLANTING SOIL MIXTURE:
 2 PARTS PEAT MOSS
 5 PARTS TOPSOIL
 MYCORRHIZA INOCULANT - "TRANSPLANT 1-STEP" AS MANUFACTURED BY ROOTS, INC. OR APPROVED EQUAL.
 USE PER MANUFACTURER'S RECOMMENDATIONS FOR TREES AND SHRUBS. FERTILIZER/LIME APPLY AS RECOMMENDED BY SOIL ANALYSIS

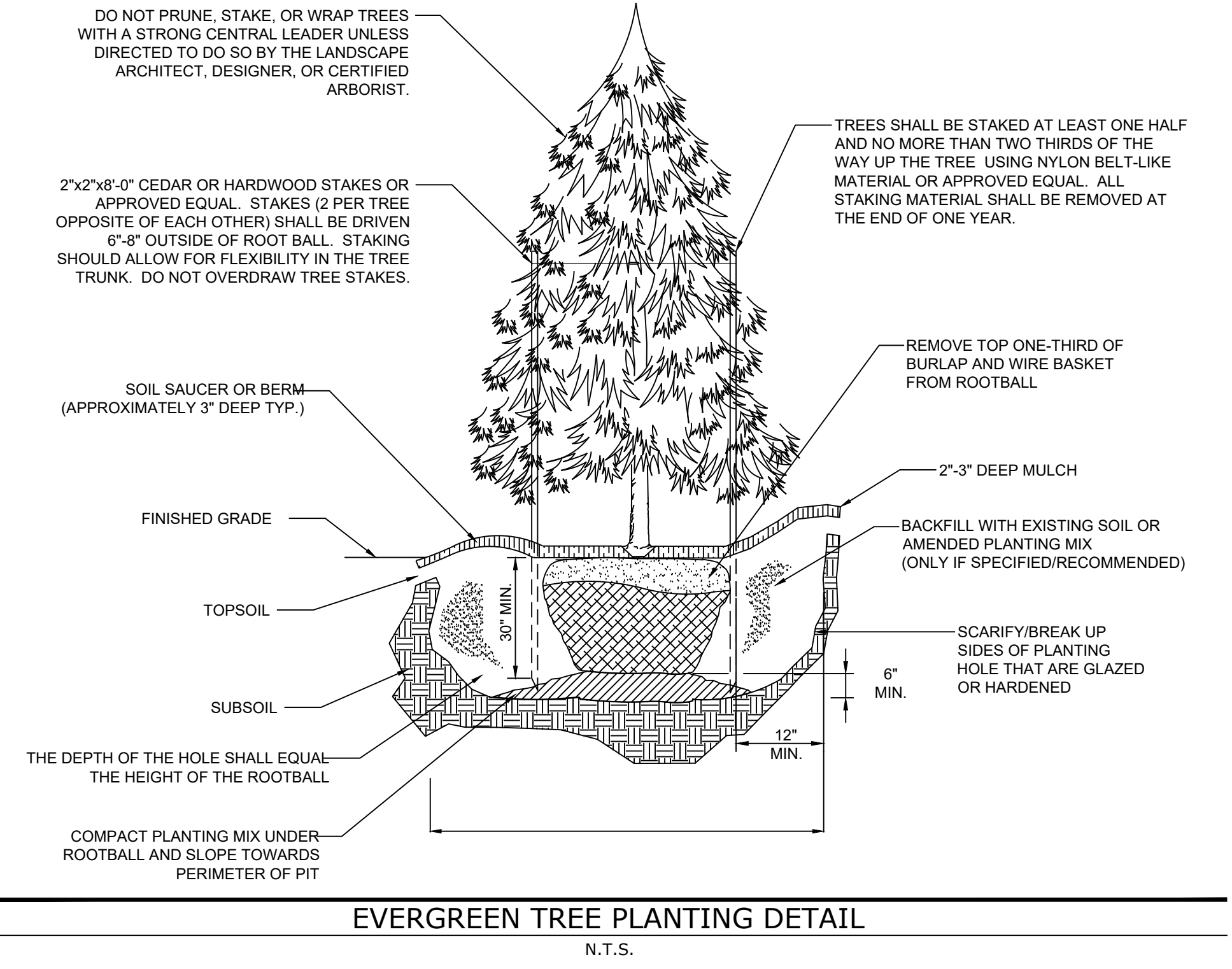
 - TREES, AND SHRUBS: TREES AND SHRUBS SHALL BE NURSERY GROWN UNLESS OTHERWISE NOTED AND HARDY UNDER CLIMATIC CONDITIONS SIMILAR TO THOSE IN THE LOCATION OF THE PROJECT. THEY SHALL BE TYPICAL OF THEIR SPECIES OR VARIETY, WITH NORMAL HABIT OF GROWTH. THEY SHALL BE SOUND, HEALTHY, VIGOROUS, WELL-BRANCHED AND DENSELY FOLIATED WHEN IN LEAF. THEY SHALL BE FREE OF DISEASE, INSECT PESTS, EGGS OR LARVAE. THEY SHALL HAVE HEALTHY AND WELL-DEVELOPED ROOT SYSTEMS. ALL TREES SHALL HAVE STRAIGHT SINGLE TRUNKS WITH THEIR MAIN LEADER INTACT. THE OWNER, CERTIFIED LANDSCAPE INSPECTOR, LANDSCAPE ARCHITECT SHALL ONLY PERMIT SUBSTITUTIONS UPON WRITTEN APPROVAL. THEIR SIZES SHALL CONFORM TO THE MEASUREMENT SPECIFIED ON THE DRAWINGS. PLANTS LARGER THAN SPECIFIED ON THE DRAWINGS MAY BE USED IF APPROVED. THE USE OF SUCH PLANTS SHALL NOT INCREASE THE CONTRACT PRICE. ALL TREES AND SHRUBS SHALL BE MULCHED IN ACCORDANCE WITH THE RESPECTIVE PLANTING DETAIL(S) PROVIDED IN THE LANDSCAPING PLAN.
 - ALL PRUNING SHALL CONFORM TO THE TREE CARE INDUSTRY ASSOCIATION (TCIA) ANSI A300 (PART 1) - 2017 PRUNING STANDARDS. PRUNING STANDARDS SHALL RECOGNIZE BUT, ARE NOT LIMITED TO, THE FOLLOWING PRUNING OBJECTIVES: MANAGE RISK; MANAGE HEALTH; DEVELOP STRUCTURE; PROVIDE CLEARANCE; MANAGE SIZE OR SHAPE; IMPROVE AESTHETICS; MANAGE PRODUCTION OF FRUIT, FLOWERS, OR OTHER PRODUCTS; AND/OR MANAGE WILDLIFE HABITAT. DEVELOPING STRUCTURE SHALL IMPROVE BRANCH AND TRUNK ARCHITECTURE. PROMOTE OR SUBORDINATE CERTAIN LEADERS, STEMS, OR BRANCHES; PROMOTE DESIRABLE BRANCH SPACING; PROMOTE OR DISCOURAGE GROWTH IN A PARTICULAR DIRECTION (DIRECTIONAL PRUNING); MINIMIZE FUTURE INTERFERENCE WITH TRAFFIC, LINES OF SIGHT, INFRASTRUCTURE, OR OTHER PLANTS; RESTORE PLANTS FOLLOWING DAMAGE; AND/OR REJUVENATE SHRUBS. PROVIDING CLEARANCE SHALL ENSURE SAFE AND RELIABLE UTILITY SERVICES; MINIMIZE CURRENT INTERFERENCE WITH TRAFFIC, LINES OF SITE, INFRASTRUCTURE, OR OTHER PLANTS; RAISE CROWN(S) FOR MOVEMENT OF TRAFFIC OR LIGHT PENETRATION; ENSURE LINES OF SIGHT OR DESIRED VIEWS; PROVIDE ACCESS TO SITES, BUILDINGS, OR OTHER STRUCTURES; AND/OR COMPLY WITH REGULATIONS.
 - TOPSOIL SHALL BE INSTALLED AT A MINIMUM DEPTH OF 4 INCHES. CONTRACTOR SHALL SUBMIT TOPSOIL TO A CERTIFIED TESTING LABORATORY TO DETERMINE PH, FERTILITY, ORGANIC CONTENT AND MECHANICAL COMPOSITION. THE CONTRACTOR SHALL SUBMIT THE TEST RESULTS FROM REGIONAL EXTENSION OFFICE OF USDA TO THE OWNER, CERTIFIED LANDSCAPE INSPECTOR, OR LANDSCAPE ARCHITECT FOR REVIEW AND APPROVAL. CONTRACTOR SHALL INCORPORATE AMENDMENTS FOR GOOD PLANT GROWTH AND PROPER SOIL ACIDITY RECOMMENDED FROM THE TOPSOIL TEST.
 - NO PHOSPHOROUS SHALL BE USED AT PLANTING TIME UNLESS SOIL TESTING HAS BEEN COMPLETED AND TESTED BY A HORTICULTURAL TESTING LAB AND SOIL TESTS SPECIFICALLY INDICATE A PHOSPHOROUS DEFICIENCY THAT IS HARMFUL, OR WILL PREVENT NEW LAWNS/GRASSES AND PLANTINGS FROM ESTABLISHING PROPERLY.
 - IF SOIL TESTS INDICATE A PHOSPHOROUS DEFICIENCY THAT WILL IMPACT PLANT AND LAWN ESTABLISHMENT, PHOSPHOROUS SHALL BE APPLIED AT THE MINIMUM RECOMMENDED LEVEL PRESCRIBED IN THE SOIL TEST FOLLOWING ALL APPLICABLE STANDARDS, REQUIREMENTS, AND/OR REGULATIONS.
 - ALL SLOPES GREATER THAN 3:1 RECEIVING A WILDFLOWER, WETLAND, AND/OR GRASS SEEDING MIXTURE SHALL BE COVERED WITH AN EROSION CONTROL BLANKET.
 - ALL WILDFLOWERS AND GRASSES SOWED SHALL BE ALLOWED TO GROW TO THEIR NATURALLY OCCURRING HEIGHTS WHENEVER POSSIBLE. NATIVE WILDFLOWERS AND/OR GRASSES CAN BE MOWED/MAINTAINED (WITHIN ACCEPTABLE AREAS IDENTIFIED AND/OR APPROVED BY APPROPRIATE REGULATORY AGENCIES) AS OFTEN AS NEEDED TO KEEP THE VEGETATION AT A DESIRED AND/OR MANAGEABLE/MANICURED HEIGHT.
- NON-NATIVE PLANT SPECIES SHALL NOT TOTAL MORE THAN 50% OF ALL PLANTINGS. INVASIVE SPECIES SHALL NOT BE PERMITTED.
- PLANT MATERIALS SHALL NOT INCLUDE MORE THAN 25% OF ANY SINGLE SPECIES. THE PLANTINGS SHALL INCLUDE A MIX OF EVERGREEN AND DECIDUOUS TREES, UNDERSTORY TREES, SHRUBS, AND FLOWERING HERBACEOUS LAYER.
- ALL PLANT MATERIAL SHALL CONFORM TO THE PLAN SIZE SPECIFICATIONS AS ESTABLISHED BY THE AMERICAN STANDARD FOR NURSERY STOCK LATEST EDITION.

LEGEND - OVERALL PLANTING TOTALS

LANDSCAPE PLANTING SCHEDULE VISUAL MITIGATION PLANTING TEMPLATE TYPES A

EVERGREEN TREES

SYMBOL	BOTANICAL NAME/ COMMON PLANT NAME	QUANTITY	SIZE	ROOT	MATURE HEIGHT
JV	JUNIPERUS VIRGINIANA EASTERN RED CEDAR	25	5'-6" HT.	B&B	40'-50" HT.
PG	PICEA GLAUCA WHITE SPRUCE	28	5'-6" HT.	B&B	40'-60" HT.
TS	THUJA STANDISHII X PLICATA 'GREEN GIANT' GREEN GIANT ARBORVITAE	15	5'-6" HT.	B&B	40'-50" HT.



EVERGREEN TREE PLANTING DETAIL
N.T.S.

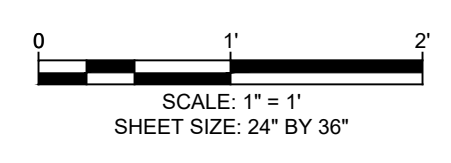
FLOWERING HERBACEOUS LAYER/NORTHEAST NATIVE POLLINATOR SEED MIXES

ERNST CONSERVATION SEEDS: FUZZ & BUZZ MIX - STANDARD - ERNMX-146

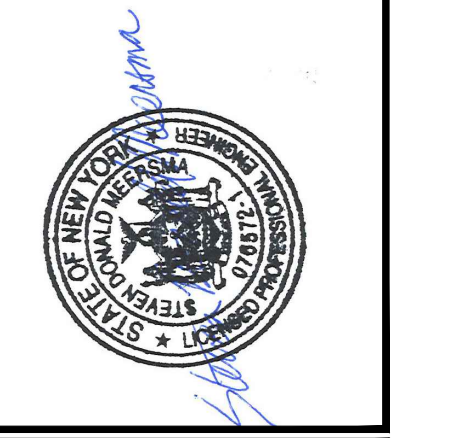
MIX CONCENTRATION	BOTANICAL NAME	COMMON NAME	RATE (LBS/ACRE)	RATE (LBS/1000 FT ²)
26.40%	LOLIUM PERENNE, 'CRAVE' TETRAPLOID	PERENNIAL RYEGRASS, 'CRAVE', TETRAPLOID		
20.80%	DACTYLIS GLOMERATA, 'PENNLATE'	ORCHARDGRASS, 'PENNLATE'		
18.90%	POA PRATENSIS, 'GINGER'	KENTUCKY BLUEGRASS, 'GINGER' (PASTURE TYPE)		
17.00%	FESTUCA ELATIO X LOLIUM PERENNE, 'DUO'	FESTULOLIUM, 'DUO'		
5.70%	TRIFOLIUM HYBRIDUM	ALSIKE CLOVER		
4.80%	TRIFOLIUM PRATENSE, MEDIUM, VARIETY NOT STATED	RED CLOVER, MEDIUM, VARIETY NOT STATED	40	.92
2.00%	LOTUS CORNICULATUS, 'LEO'	BIRD'S FOOT TREFOIL, 'LEO'		
1.30%	CICHORIUM INTYBUS	BLUE CHICORY		
1.00%	CHRYSANTHEMUM LEUCANTHEMUM	OXEYE DAISY		
0.90%	COREOPSIS LANCEOLATA	LANCELEAF COREOPSIS		
0.80%	CHAMAECRISTA FASCICULATA, PA ECOTYPE	PARTRIDGE PEA, PA ECOTYPE		
0.40%	SOLIDAGO NEMORALIS, PA ECOTYPE	GRAY GOLDENROD, PA ECOTYPE		

SEEDING RATE: EXPECT TO APPLY ABOUT 40 LBS PER ACRE WITH A COVER CROP OF ANNUAL RYEGRASS 12 LBS/ACRE

NOTE:
 NATIVE POLLINATOR SEED MIXES ARE INTENDED TO PROVIDE AN EXCELLENT WILDLIFE FOOD AND SHELTER THAT WILL ATTRACT A VARIETY OF POLLINATORS AND SONGBIRDS. THE NATIVE WILDFLOWERS AND GRASSES IN THIS MIX PROVIDE AN ATTRACTIVE DISPLAY OF COLOR FROM SPRING TO FALL. POLLINATOR SEED MIXES ARE INTENDED TO PROVIDE NECTAR AND FOOD SOURCES FOR A VARIETY OF POLLINATORS AND LARVA. THESE MIXES ARE COMPRISED OF A FAIRLY EVEN MIX OF NATIVE AND/OR INDIGENOUS WILDFLOWERS AND GRASSES. THE POLLINATOR SEED MIX IS INTENDED TO BE SOWN INSIDE OF THE SOLAR ARRAY FIELD AND ADJACENT TO THE PERIMETER FENCE.



NOTE: THESE PLANS ARE ACCOMPANIED BY SUPPLEMENTAL DOCUMENTS. THESE DOCUMENTS ARE INTERRELATED AND ARE INTENDED TO BE USED TOGETHER. THESE DOCUMENTS ARE INTENDED TO BE USED FOR LOCAL APPROVAL PURPOSES ONLY.
 NOT FOR CONSTRUCTION



Revisions:

No.	Date
1	SEPTEMBER 21, 2022
2	MAY 10, 2023

Drawn by:
A. REXROAT

Checked by:
S. MEERSMA

Approved by:
C. DUNCAN

**SCS DELL 014136 YORKTOWN, LLC
 DELL AVENUE SOLAR FARM
 FIXED-TILT GROUND MOUNT SOLAR ENERGY SYSTEM
 DELL AVENUE, YORKTOWN, NEW YORK 10514**

Contract No:
 431302

Scale:
 AS SHOWN

Date:
 AUGUST 30, 2022

Sheet:
LANDSCAPE NOTES & DETAILS

Drawing No:
L-103