

Tree Survey Report (Preliminary)

June 15, 2022

Sol Systems, LLC

Dell Ave

**Yorktown, Westchester
County, New York**

Prepared For:



Prepared By:



TRC Companies
650 Suffolk Street, Suite 200
Lowell, MA 01854

Table of Contents

1.0	INTRODUCTION.....	1
1.1	Report Purpose.....	1
2.0	ECOLOGICAL REGION.....	1
3.0	METHODS	2
4.0	RESULTS	2
5.0	CONCLUSIONS.....	4
6.0	REFERENCES.....	6

TABLES

Table 1. Summary Statistics of Trees Greater than 8 inches DBH by Status

Table 2. Summary Statistics of Trees Greater than 8 inches DBH by Species

APPENDICES

Appendix A – Tree Inventory

1.0 INTRODUCTION

SCS Dell 014136 Yorktown, LLC proposes to construct and operate the Dell Avenue Solar Farm Project, a 3,625 kWac fixed-tilt ground mount solar energy system and associated facilities (the Project) on property located on Dell Ave in the Town of Yorktown, Westchester County, New York. The Project Site consists of two parcels totaling 62.33 acres (parcel IDs 70.11-1-16, 70.15-1-2). A figure depicting the Project Site overlaying United States Geological Survey (USGS) maps are presented as Figure 1. Site plans have been submitted to the Town Planning Board.

The purpose of this tree survey was to document protected trees within the anticipated 14.1-acre Limit of Disturbance (LOD) for a tree permit application in accordance with Chapter 270 of the Yorktown Town Code. Protected trees are defined by the Town of Yorktown as trees equal to or greater than 8 inches in diameter at breast height (DBH). A tree permit is required for:

- The removal of 10 protected trees or more, in an area of 10,000 square feet or more in a calendar year;
- Removal of any specimen tree (i.e., any tree with a DBH of 24 inches or more);
- Land conversion, which is the disturbance of 1,000 square feet or more of protected woodland (i.e., a woodland 10,000 square feet or greater in area regardless of individual property boundaries) and the subsequent permanent alteration of the site such that a woodland can no longer regenerate on the site in its altered state. Such permanent alteration may include, but is not limited to, paving or installation of other impervious surfaces, soil removal, soil compaction, or intentional flooding; and,
- A woodland disturbance equal to or greater than 10,000 square feet or 6 percent of the area of protected woodlands existing on a parcel of land, whichever is greater, notwithstanding any requirement for a permit under Chapter 248: Stormwater Management and Erosion and Sediment Control.

Disturbance in a protected woodland that is within a wetland and/or a 100-foot wetland buffer requires a wetland permit under Chapter 178: Freshwater Wetlands.

1.1 Report Purpose

This document presents the results of a tree survey performed by TRC on behalf of Sol Systems on April 28, 2021; April 29, 2021; May 25, 2021; May 26, 2021; June 10, 2021; June 11, 2021; and June 17, 2021.

2.0 ECOLOGICAL REGION

The Project Site is located within the Eastern Broadleaf Forest (Oceanic) Province Ecological Region (Bailey 1995). Ecological Regions are large areas of similar climate where ecological communities occur in predictable patterns (Bailey 1995). The New York Department of Environmental Conservation (NYSDEC) further divides the state into Ecological Zones.

Ecological Zones are defined by general similarities in the ecosystem such as climate, soil, hydrology, vegetation, hydrology, geology and physiography (Bryce et al. 2010). These Ecological Zones are further classified into a hierarchy of Major Zones and Minor Zones. The Project Site is located within the NYSDEC-designated Major Zone D Hudson Valley and the Central Hudson Minor Zone (Will et al. 1982). The forest communities of the Ecological Region and Ecological Zones are described in further detail below.

The Eastern Broadleaf Forest (Oceanic) Province Ecological Region is characterized by temperate deciduous forests dominated by tall broadleaf trees (Bailey 1995). The NYSDEC Major Zone D – Hudson Valley is part of the oak-northern hardwood natural vegetation area. (Will et al. 1982). The forest type of the Central Hudson Minor Zone is characterized as northern hardwoods and pioneer hardwoods.

3.0 METHODS

Tree DBH was measured using diameter measuring tapes. Trees with a DBH equal to or greater than 8 inches were identified and recorded on a hand-held global positioning system (GPS) unit. If a tree was unable to be identified to the species level, it was categorized as unknown. Trees were noted as dead if they had excessively exfoliating bark, brittle branches, exposed decaying inner wood, deep holes, or lacked a crown. Trees equal to or greater than 8 inches DBH were marked with a horizontal line on the trunk using a different colored spray paint for each surveyor (e.g., white, green, red, and blue) and located with a hand-held GPS unit with reported sub-meter accuracy. The average and standard deviation (SD) in DBH for all trees and each tree species were calculated using Microsoft Excel. The SD was calculated using the following formula:

$$SD = \sqrt{\frac{\sum(x - \bar{x})^2}{n}}$$

In the formula above, Σ means the “sum of,” x is each tree’s diameter, \bar{x} is the average diameter of all trees, and n is the number of all trees. The SD represents the variability of tree diameters; therefore, a lower SD means that most of the tree diameters are close to the average tree diameter. A higher SD means that the individual tree diameters are more spread out from the average tree diameter. These numbers have been provided to paint a quantitative picture of species composition onsite.

4.0 RESULTS

A total of 1,055 trees with a DBH equal to or greater than 8 inches were identified in the LOD. There were 114 specimen trees (10.8 percent of all the trees surveyed). The LOD had a tree density of 75 trees per acre and the average tree DBH was 15.6 in. (SD = 6.7). A total of 20 tree taxa, including unknown trees, were identified. Sugar maple (*Acer saccharum*) and northern red oak (*Quercus rubra*) were the most common trees identified, with a 44.3 and 17.3 percent frequency of occurrence respectively. Tulip trees (*Liriodendron tulipifera*) overall were the largest

trees measured with an average DBH of 25.5 inches (SD = 18.9). The largest single tree recorded was a tulip tree, which had a DBH of 92 inches. It should be noted that this tulip tree split three times at the base of the trunk. The largest single tree that did not split, was a sugar maple with a DBH of 48.5 inches.

Summary statistics for the tree survey by tree status are in Table 1. Statistics for the tree survey by species identified are in Table 2. A comprehensive list of all trees identified are in Appendix A.

Table 1. Summary Statistics of Trees Greater than 8 inches DBH by Status

Tree Status	Number of Trees	Frequency of Occurrence (%)	Average DBH (inches)	Standard Deviation DBH (inches)
Alive	1,007	95.5	15.6	6.7
Dead	48	4.5	16.2	4.7
Total	1,055	100.0	15.6	6.7

Table 2. Summary Statistics of Trees Greater than 8 inches DBH by Species

Scientific Name	Common Name	Number of trees	Frequency of Occurrence (%)	Average DBH (inches)	Standard Deviation DBH (inches)
<i>Acer rubrum</i>	Red Maple	80	7.6	14.1	6.0
<i>Acer saccharum</i>	Sugar Maple	467	44.3	13.4	5.0
<i>Amelanchier arborea</i>	Common Serviceberry	1	0.1	12.3	0.0
<i>Betula lenta</i>	Black Birch	88	8.3	15.3	6.0
<i>Carya glabra</i>	Pig Nut Hickory	21	2.0	17.0	5.1
<i>Carya ovata</i>	Shagbark Hickory	59	5.6	15.1	5.0
<i>Fagus grandifolia</i>	American Beech	7	0.7	12.7	3.7
<i>Fraxinus americana</i>	White Ash	3	0.3	17.2	1.5
<i>Juglans cinerea</i>	White Walnut	2	0.2	21.7	2.1
<i>Liriodendron tulipifera</i>	Tulip Tree	15	1.4	25.5	18.9
<i>Nyssa sylvatica</i>	Black Gum	1	0.1	8.0	0.0
<i>Ostrya virginiana</i>	American Hophornbeam	1	0.1	19.0	0.0
<i>Pinus strobus</i>	Eastern White Pine	1	0.1	17.0	0.0
<i>Populus deltoides</i>	Eastern Cottonwood	15	1.4	16.6	4.0
<i>Prunus serotina</i>	Black Cherry	4	0.4	12.3	2.3
<i>Quercus alba</i>	White Oak	90	8.5	18.7	5.8
<i>Quercus montana</i>	Chestnut Oak	2	0.2	13.5	3.5
<i>Quercus rubra</i>	Northern Red Oak	183	17.3	20.2	6.9
<i>Sassafras albidum</i>	Sassafras	12	1.1	15.7	3.7
Total		1,055	100.0	15.6	6.7

5.0 CONCLUSIONS

TRC surveyed 1,055 trees with DBH equal to or greater than 8 inches within a 14.1-acre LOD within the 62.33-acre Project Site. Based on the forest composition of the LOD, the forest community most resembles a beech-maple mesic forest (Edinger et al. 2014). This forest

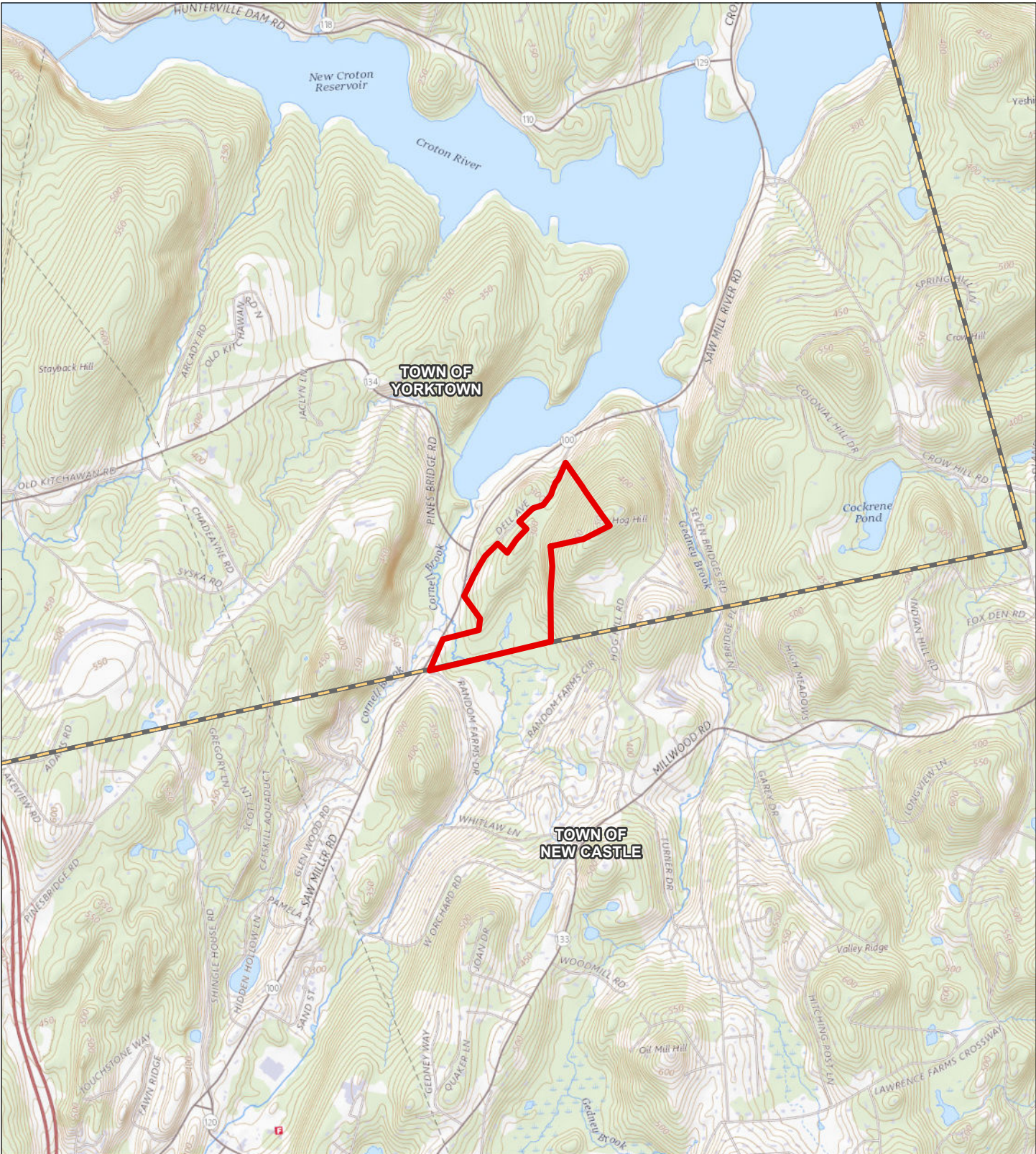
community is ranked as demonstrably or apparently secure in New York State (Edinger et al. 2014).

6.0 REFERENCES

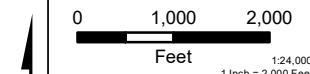
Bailey, R.G. 1995. *Description of the ecoregions of the United States*. Miscellaneous Publication No. 1391. Second edition, revised. Washington, DC: USDA Forest Service.

Edinger, G.J., et al. 2014. *Ecological Communities of New York State, Second Edition*. New York Heritage Program, NYS Department of Environmental Conservation, Albany, NY, 160 pp.

Will, G., Stumvoll, R., Gotie, R., Smith, E. 1982. The Ecological Zones of Northern New York. *New York Fish and Game Journal* 29: 1-15.



- SITE BOUNDARY
- MUNICIPAL BOUNDARY



PROJECT: **SOL SYSTEMS DELL AVE**
TOWN OF YORKTOWN
WESTCHESTER COUNTY, NY

TITLE: **SITE LOCATION MAP**

DRAWN BY:	S. MOTURI	PROJECT NO.:	431302
CHECKED BY:	M. REGAN		
APPROVED BY:	C. DUNCAN		
DATE:	JUNE 2022		

FIGURE 1



Wannalancit Mills
 650 Suffolk Street
 Lowell, MA 01854
 (978-970-5600)

Base Map: USGS Topo Maps, Exri; Data Sources: TRC, Esri

APPENDIX A

Tree Inventory

Tree ID	Common Name	Scientific Name	Status	DBH (inches)	Date Surveyed
2	White Oak	<i>Quercus alba</i>	ALIVE	11.0	4/28/2021
3	White Oak	<i>Quercus alba</i>	ALIVE	9.3	4/28/2021
4	Sugar Maple	<i>Acer saccharum</i>	ALIVE	11.0	4/28/2021
5	Sugar Maple	<i>Acer saccharum</i>	ALIVE	8.0	4/28/2021
6	Shagbark Hickory	<i>Carya ovata</i>	ALIVE	12.9	4/28/2021
7	Shagbark Hickory	<i>Carya ovata</i>	ALIVE	28.7	4/28/2021
8	White Oak	<i>Quercus alba</i>	ALIVE	19.3	4/28/2021
9	Unknown	Unknown	DEAD	13.7	4/28/2021
10	White Oak	<i>Quercus alba</i>	ALIVE	14.1	4/28/2021
11	Sugar Maple	<i>Acer saccharum</i>	ALIVE	16.7	4/28/2021
12	Sugar Maple	<i>Acer saccharum</i>	ALIVE	8.6	4/28/2021
13	Shagbark Hickory	<i>Carya ovata</i>	ALIVE	16.5	4/28/2021
14	Sugar Maple	<i>Acer saccharum</i>	ALIVE	11.3	4/28/2021
16	Sugar Maple	<i>Acer saccharum</i>	ALIVE	8.8	4/28/2021
17	Sugar Maple	<i>Acer saccharum</i>	ALIVE	8.8	4/28/2021
18	White Oak	<i>Quercus alba</i>	ALIVE	22.4	4/28/2021
23	Black Birch	<i>Betula lenta</i>	ALIVE	20.2	4/28/2021
24	White Oak	<i>Quercus alba</i>	DEAD	18.3	4/28/2021
25	Sugar Maple	<i>Acer saccharum</i>	ALIVE	18.8	4/28/2021
26	Sugar Maple	<i>Acer saccharum</i>	ALIVE	13.7	4/28/2021
27	Sugar Maple	<i>Acer saccharum</i>	ALIVE	9.8	4/28/2021
28	Sugar Maple	<i>Acer saccharum</i>	ALIVE	17.8	4/28/2021
29	Sugar Maple	<i>Acer saccharum</i>	ALIVE	11.1	4/28/2021
30	Sugar Maple	<i>Acer saccharum</i>	ALIVE	16.3	4/28/2021
31	Sugar Maple	<i>Acer saccharum</i>	ALIVE	8.9	4/28/2021
32	Sugar Maple	<i>Acer saccharum</i>	ALIVE	8.9	4/28/2021
33	Sugar Maple	<i>Acer saccharum</i>	ALIVE	24.7	4/28/2021
34	Sugar Maple	<i>Acer saccharum</i>	ALIVE	14.1	4/28/2021
35	Sugar Maple	<i>Acer saccharum</i>	ALIVE	9.8	4/28/2021
36	Sugar Maple	<i>Acer saccharum</i>	ALIVE	14.2	4/28/2021
37	Sugar Maple	<i>Acer saccharum</i>	ALIVE	13.9	4/28/2021
38	Sugar Maple	<i>Acer saccharum</i>	ALIVE	14.2	4/28/2021
39	Sugar Maple	<i>Acer saccharum</i>	ALIVE	17.0	4/28/2021
40	Sugar Maple	<i>Acer saccharum</i>	ALIVE	14.2	4/28/2021
41	Sugar Maple	<i>Acer saccharum</i>	ALIVE	13.0	4/28/2021
42	Sugar Maple	<i>Acer saccharum</i>	ALIVE	12.5	4/28/2021
43	Sugar Maple	<i>Acer saccharum</i>	ALIVE	12.2	4/28/2021
44	Sugar Maple	<i>Acer saccharum</i>	ALIVE	8.5	4/28/2021
45	Sugar Maple	<i>Acer saccharum</i>	ALIVE	11.4	4/28/2021
46	Sugar Maple	<i>Acer saccharum</i>	ALIVE	9.0	4/28/2021
47	White Oak	<i>Quercus alba</i>	ALIVE	23.2	4/28/2021
48	White Oak	<i>Quercus alba</i>	ALIVE	22.7	4/28/2021
49	White Oak	<i>Quercus alba</i>	ALIVE	16.9	4/28/2021
50	Red Maple	<i>Acer rubrum</i>	ALIVE	9.8	4/28/2021
51	Red Maple	<i>Acer rubrum</i>	ALIVE	11.4	4/28/2021
57	White Oak	<i>Quercus alba</i>	DEAD	15.5	4/28/2021

Tree ID	Common Name	Scientific Name	Status	DBH (inches)	Date Surveyed
58	Sugar Maple	<i>Acer saccharum</i>	ALIVE	13.5	4/28/2021
59	Sugar Maple	<i>Acer saccharum</i>	ALIVE	21.0	4/28/2021
60	Sugar Maple	<i>Acer saccharum</i>	ALIVE	14.6	4/28/2021
61	Sugar Maple	<i>Acer saccharum</i>	ALIVE	21.6	4/28/2021
62	Sugar Maple	<i>Acer saccharum</i>	ALIVE	13.8	4/28/2021
63	Sugar Maple	<i>Acer saccharum</i>	ALIVE	10.2	4/28/2021
64	Sugar Maple	<i>Acer saccharum</i>	ALIVE	27.0	4/28/2021
65	Sugar Maple	<i>Acer saccharum</i>	ALIVE	21.0	4/28/2021
66	Sugar Maple	<i>Acer saccharum</i>	ALIVE	13.2	4/28/2021
67	Sugar Maple	<i>Acer saccharum</i>	DEAD	13.7	4/28/2021
68	Sugar Maple	<i>Acer saccharum</i>	ALIVE	10.9	4/28/2021
69	White Oak	<i>Quercus alba</i>	ALIVE	17.1	4/28/2021
70	Sugar Maple	<i>Acer saccharum</i>	ALIVE	16.2	4/28/2021
71	Red Maple	<i>Acer rubrum</i>	ALIVE	9.3	4/28/2021
72	Red Maple	<i>Acer rubrum</i>	ALIVE	15.8	4/28/2021
73	Red Maple	<i>Acer rubrum</i>	ALIVE	13.4	4/28/2021
74	Red Maple	<i>Acer rubrum</i>	ALIVE	13.2	4/28/2021
75	Sugar Maple	<i>Acer saccharum</i>	ALIVE	15.9	4/28/2021
76	Sugar Maple	<i>Acer saccharum</i>	ALIVE	9.0	4/28/2021
77	Sugar Maple	<i>Acer saccharum</i>	DEAD	12.1	4/28/2021
78	Sugar Maple	<i>Acer saccharum</i>	DEAD	13.2	4/28/2021
79	Black Birch	<i>Betula lenta</i>	ALIVE	9.8	4/28/2021
80	Sugar Maple	<i>Acer saccharum</i>	ALIVE	15.8	4/28/2021
81	Sugar Maple	<i>Acer saccharum</i>	ALIVE	10.6	4/28/2021
82	White Oak	<i>Quercus alba</i>	ALIVE	13.8	4/28/2021
83	Black Birch	<i>Betula lenta</i>	ALIVE	14.8	4/28/2021
84	White Oak	<i>Quercus alba</i>	ALIVE	25.5	4/28/2021
85	Sugar Maple	<i>Acer saccharum</i>	ALIVE	8.0	4/28/2021
86	Sugar Maple	<i>Acer saccharum</i>	ALIVE	12.0	4/28/2021
87	Sugar Maple	<i>Acer saccharum</i>	ALIVE	13.4	4/28/2021
88	Sugar Maple	<i>Acer saccharum</i>	ALIVE	24.0	4/28/2021
89	Sugar Maple	<i>Acer saccharum</i>	ALIVE	9.6	4/28/2021
90	White Oak	<i>Quercus alba</i>	DEAD	24.0	4/28/2021
91	White Oak	<i>Quercus alba</i>	DEAD	17.2	4/28/2021
92	Sugar Maple	<i>Acer saccharum</i>	ALIVE	16.0	4/28/2021
93	White Oak	<i>Quercus alba</i>	DEAD	21.5	4/28/2021
94	White Oak	<i>Quercus alba</i>	DEAD	14.0	4/28/2021
95	White Oak	<i>Quercus alba</i>	DEAD	24.0	4/28/2021
96	Sugar Maple	<i>Acer saccharum</i>	ALIVE	9.5	4/28/2021
97	Sugar Maple	<i>Acer saccharum</i>	ALIVE	11.8	4/28/2021
98	Sugar Maple	<i>Acer saccharum</i>	ALIVE	16.0	4/28/2021
99	Sugar Maple	<i>Acer saccharum</i>	ALIVE	14.5	4/28/2021
100	White Oak	<i>Quercus alba</i>	DEAD	20.0	4/28/2021
101	White Oak	<i>Quercus alba</i>	ALIVE	21.9	4/28/2021
102	White Oak	<i>Quercus alba</i>	ALIVE	24.0	4/28/2021
103	Sugar Maple	<i>Acer saccharum</i>	ALIVE	11.7	4/28/2021

Tree ID	Common Name	Scientific Name	Status	DBH (inches)	Date Surveyed
104	Sugar Maple	<i>Acer saccharum</i>	ALIVE	10.0	4/28/2021
105	White Oak	<i>Quercus alba</i>	ALIVE	18.1	4/28/2021
106	Sugar Maple	<i>Acer saccharum</i>	ALIVE	10.6	4/28/2021
107	White Oak	<i>Quercus alba</i>	ALIVE	37.9	4/28/2021
108	White Oak	<i>Quercus alba</i>	ALIVE	24.9	4/28/2021
110	White Oak	<i>Quercus alba</i>	ALIVE	26.1	4/28/2021
111	White Oak	<i>Quercus alba</i>	ALIVE	19.5	4/28/2021
113	White Oak	<i>Quercus alba</i>	ALIVE	11.1	4/28/2021
114	Sugar Maple	<i>Acer saccharum</i>	ALIVE	13.1	4/28/2021
117	White Oak	<i>Quercus alba</i>	ALIVE	10.7	4/28/2021
132	Sugar Maple	<i>Acer saccharum</i>	ALIVE	8.0	4/28/2021
133	White Oak	<i>Quercus alba</i>	ALIVE	18.2	4/28/2021
134	Sugar Maple	<i>Acer saccharum</i>	ALIVE	8.0	4/28/2021
135	Sugar Maple	<i>Acer saccharum</i>	ALIVE	14.1	4/28/2021
136	Sugar Maple	<i>Acer saccharum</i>	ALIVE	15.3	4/28/2021
137	Sugar Maple	<i>Acer saccharum</i>	ALIVE	9.5	4/28/2021
138	Sugar Maple	<i>Acer saccharum</i>	ALIVE	12.3	4/28/2021
139	Sugar Maple	<i>Acer saccharum</i>	ALIVE	8.0	4/28/2021
140	Sugar Maple	<i>Acer saccharum</i>	ALIVE	11.2	4/28/2021
141	Sugar Maple	<i>Acer saccharum</i>	ALIVE	14.8	4/28/2021
142	Sugar Maple	<i>Acer saccharum</i>	ALIVE	10.2	4/28/2021
143	Sugar Maple	<i>Acer saccharum</i>	ALIVE	8.7	4/28/2021
144	Black Birch	<i>Betula lenta</i>	ALIVE	10.9	4/28/2021
145	Sugar Maple	<i>Acer saccharum</i>	ALIVE	8.7	4/28/2021
146	Sugar Maple	<i>Acer saccharum</i>	ALIVE	13.1	4/28/2021
147	Sugar Maple	<i>Acer saccharum</i>	ALIVE	25.7	4/28/2021
148	Sugar Maple	<i>Acer saccharum</i>	ALIVE	24.1	4/28/2021
149	Sugar Maple	<i>Acer saccharum</i>	ALIVE	15.4	4/28/2021
150	Shagbark Hickory	<i>Carya ovata</i>	DEAD	8.5	4/28/2021
151	Sugar Maple	<i>Acer saccharum</i>	ALIVE	11.5	4/28/2021
152	Shagbark Hickory	<i>Carya ovata</i>	ALIVE	15.3	4/28/2021
153	Sugar Maple	<i>Acer saccharum</i>	ALIVE	12.4	4/28/2021
154	Red Maple	<i>Acer rubrum</i>	ALIVE	16.1	4/28/2021
155	Sugar Maple	<i>Acer saccharum</i>	ALIVE	13.1	4/28/2021
156	Black Birch	<i>Betula lenta</i>	ALIVE	19.5	4/28/2021
157	Sugar Maple	<i>Acer saccharum</i>	ALIVE	13.0	4/28/2021
158	Sugar Maple	<i>Acer saccharum</i>	ALIVE	9.1	4/28/2021
159	White Oak	<i>Quercus alba</i>	DEAD	19.5	4/28/2021
160	White Oak	<i>Quercus alba</i>	DEAD	19.2	4/28/2021
161	Sugar Maple	<i>Acer saccharum</i>	ALIVE	27.5	4/28/2021
162	Black Birch	<i>Betula lenta</i>	ALIVE	15.5	4/28/2021
163	Black Birch	<i>Betula lenta</i>	ALIVE	19.0	4/28/2021
164	White Oak	<i>Quercus alba</i>	ALIVE	24.3	4/28/2021
165	White Oak	<i>Quercus alba</i>	ALIVE	19.6	4/28/2021
166	Sugar Maple	<i>Acer saccharum</i>	ALIVE	9.3	4/28/2021
167	Shagbark Hickory	<i>Carya ovata</i>	ALIVE	19.8	4/28/2021

Tree ID	Common Name	Scientific Name	Status	DBH (inches)	Date Surveyed
168	Black Birch	<i>Betula lenta</i>	ALIVE	15.5	4/28/2021
169	Black Birch	<i>Betula lenta</i>	ALIVE	13.1	4/28/2021
174	Sugar Maple	<i>Acer saccharum</i>	ALIVE	22.6	4/28/2021
175	Sugar Maple	<i>Acer saccharum</i>	ALIVE	48.5	4/28/2021
176	Sugar Maple	<i>Acer saccharum</i>	ALIVE	12.4	4/28/2021
177	Sugar Maple	<i>Acer saccharum</i>	ALIVE	12.7	4/28/2021
178	Sugar Maple	<i>Acer saccharum</i>	ALIVE	14.6	4/28/2021
179	Sugar Maple	<i>Acer saccharum</i>	ALIVE	8.9	4/28/2021
180	Sugar Maple	<i>Acer saccharum</i>	ALIVE	15.0	4/28/2021
181	Sugar Maple	<i>Acer saccharum</i>	ALIVE	8.7	4/28/2021
182	Black Birch	<i>Betula lenta</i>	ALIVE	16.0	4/28/2021
183	Black Birch	<i>Betula lenta</i>	ALIVE	10.6	4/28/2021
184	White Ash	<i>Fraxinus americana</i>	DEAD	15.2	4/28/2021
185	White Ash	<i>Fraxinus americana</i>	DEAD	17.4	4/28/2021
186	White Ash	<i>Fraxinus americana</i>	DEAD	18.9	4/28/2021
187	Black Birch	<i>Betula lenta</i>	ALIVE	10.4	4/28/2021
188	Black Birch	<i>Betula lenta</i>	ALIVE	16.1	4/28/2021
189	Red Maple	<i>Acer rubrum</i>	ALIVE	14.3	4/28/2021
190	White Oak	<i>Quercus alba</i>	ALIVE	17.3	4/28/2021
191	White Oak	<i>Quercus alba</i>	ALIVE	17.2	4/28/2021
193	Sugar Maple	<i>Acer saccharum</i>	DEAD	9.7	4/29/2021
195	Shagbark Hickory	<i>Carya ovata</i>	ALIVE	27.6	4/29/2021
196	Shagbark Hickory	<i>Carya ovata</i>	ALIVE	15.2	4/29/2021
200	White Oak	<i>Quercus alba</i>	ALIVE	24.6	4/29/2021
203	White Oak	<i>Quercus alba</i>	ALIVE	18.5	4/29/2021
204	Sugar Maple	<i>Acer saccharum</i>	ALIVE	17.7	4/29/2021
205	Red Maple	<i>Acer rubrum</i>	ALIVE	8.9	4/29/2021
207	White Oak	<i>Quercus alba</i>	ALIVE	18.6	4/29/2021
209	White Oak	<i>Quercus alba</i>	ALIVE	19.0	4/29/2021
211	White Oak	<i>Quercus alba</i>	ALIVE	8.0	4/29/2021
212	White Oak	<i>Quercus alba</i>	ALIVE	11.0	4/29/2021
213	White Oak	<i>Quercus alba</i>	ALIVE	27.8	4/29/2021
215	Sugar Maple	<i>Acer saccharum</i>	ALIVE	9.2	4/29/2021
217	Sugar Maple	<i>Acer saccharum</i>	ALIVE	8.0	4/29/2021
219	Red Maple	<i>Acer rubrum</i>	ALIVE	8.0	4/29/2021
220	Sugar Maple	<i>Acer saccharum</i>	ALIVE	13.2	4/29/2021
222	Sugar Maple	<i>Acer saccharum</i>	DEAD	9.0	4/29/2021
223	Sugar Maple	<i>Acer saccharum</i>	ALIVE	12.6	4/29/2021
225	White Oak	<i>Quercus alba</i>	ALIVE	12.1	4/29/2021
227	Red Maple	<i>Acer rubrum</i>	ALIVE	11.5	4/29/2021
229	Sugar Maple	<i>Acer saccharum</i>	DEAD	15.8	4/29/2021
230	Sugar Maple	<i>Acer saccharum</i>	ALIVE	14.0	4/29/2021
232	Sugar Maple	<i>Acer saccharum</i>	ALIVE	13.0	4/29/2021
234	Red Maple	<i>Acer rubrum</i>	ALIVE	19.4	4/29/2021
235	Red Maple	<i>Acer rubrum</i>	ALIVE	18.9	4/29/2021
237	Sugar Maple	<i>Acer saccharum</i>	ALIVE	12.9	4/29/2021

Tree ID	Common Name	Scientific Name	Status	DBH (inches)	Date Surveyed
238	Sugar Maple	<i>Acer saccharum</i>	DEAD	15.2	4/29/2021
240	Sugar Maple	<i>Acer saccharum</i>	ALIVE	15.4	4/29/2021
241	Sugar Maple	<i>Acer saccharum</i>	ALIVE	8.9	4/29/2021
244	Sugar Maple	<i>Acer saccharum</i>	ALIVE	12.5	4/29/2021
246	Sugar Maple	<i>Acer saccharum</i>	ALIVE	14.8	4/29/2021
248	White Oak	<i>Quercus alba</i>	DEAD	15.5	4/29/2021
249	Sugar Maple	<i>Acer saccharum</i>	ALIVE	8.0	4/29/2021
251	Sugar Maple	<i>Acer saccharum</i>	ALIVE	14.8	4/29/2021
252	Sugar Maple	<i>Acer saccharum</i>	ALIVE	13.7	4/29/2021
254	Sugar Maple	<i>Acer saccharum</i>	ALIVE	20.6	4/29/2021
256	Sugar Maple	<i>Acer saccharum</i>	DEAD	8.7	4/29/2021
258	Sugar Maple	<i>Acer saccharum</i>	ALIVE	12.2	4/29/2021
260	White Oak	<i>Quercus alba</i>	ALIVE	21.0	4/29/2021
261	Sugar Maple	<i>Acer saccharum</i>	ALIVE	9.6	4/29/2021
263	Sugar Maple	<i>Acer saccharum</i>	ALIVE	14.6	4/29/2021
264	Sugar Maple	<i>Acer saccharum</i>	ALIVE	12.1	4/29/2021
265	Sugar Maple	<i>Acer saccharum</i>	ALIVE	10.8	4/29/2021
267	White Oak	<i>Quercus alba</i>	ALIVE	16.0	4/29/2021
270	Sugar Maple	<i>Acer saccharum</i>	ALIVE	10.7	4/29/2021
273	Sugar Maple	<i>Acer saccharum</i>	ALIVE	10.8	4/29/2021
353	Sugar Maple	<i>Acer saccharum</i>	ALIVE	8.2	4/29/2021
355	White Oak	<i>Quercus alba</i>	ALIVE	17.4	4/29/2021
358	Sugar Maple	<i>Acer saccharum</i>	ALIVE	13.5	4/29/2021
371	White Oak	<i>Quercus alba</i>	ALIVE	8.9	4/29/2021
373	White Oak	<i>Quercus alba</i>	ALIVE	9.6	4/29/2021
376	White Oak	<i>Quercus alba</i>	ALIVE	18.3	4/29/2021
378	White Oak	<i>Quercus alba</i>	DEAD	20.7	4/29/2021
380	White Oak	<i>Quercus alba</i>	ALIVE	24.9	4/29/2021
381	Sugar Maple	<i>Acer saccharum</i>	ALIVE	10.7	4/29/2021
383	Sugar Maple	<i>Acer saccharum</i>	ALIVE	9.8	4/29/2021
387	White Oak	<i>Quercus alba</i>	ALIVE	19.0	4/29/2021
393	Sugar Maple	<i>Acer saccharum</i>	ALIVE	12.6	4/29/2021
399	Sugar Maple	<i>Acer saccharum</i>	ALIVE	19.7	4/29/2021
426	Sugar Maple	<i>Acer saccharum</i>	ALIVE	9.1	4/29/2021
427	Sugar Maple	<i>Acer saccharum</i>	ALIVE	19.8	4/29/2021
433	Sugar Maple	<i>Acer saccharum</i>	ALIVE	25.7	4/29/2021
445	White Oak	<i>Quercus alba</i>	DEAD	19.4	4/29/2021
496	Sugar Maple	<i>Acer saccharum</i>	ALIVE	14.5	4/29/2021
498	Sugar Maple	<i>Acer saccharum</i>	ALIVE	9.9	4/29/2021
500	Sugar Maple	<i>Acer saccharum</i>	ALIVE	9.8	4/29/2021
503	White Oak	<i>Quercus alba</i>	ALIVE	27.5	4/29/2021
504	White Oak	<i>Quercus alba</i>	ALIVE	15.2	4/29/2021
506	Sugar Maple	<i>Acer saccharum</i>	ALIVE	16.6	4/29/2021
507	Sugar Maple	<i>Acer saccharum</i>	ALIVE	11.1	4/29/2021
532	Tulip Tree	<i>Liriodendron tulipifera</i>	ALIVE	24.0	5/25/2021
533	Sugar Maple	<i>Acer saccharum</i>	ALIVE	14.5	5/25/2021

Tree ID	Common Name	Scientific Name	Status	DBH (inches)	Date Surveyed
535	Sugar Maple	<i>Acer saccharum</i>	ALIVE	14.4	5/25/2021
536	Sugar Maple	<i>Acer saccharum</i>	ALIVE	15.3	5/25/2021
537	Sugar Maple	<i>Acer saccharum</i>	ALIVE	15.3	5/25/2021
538	Northern Red Oak	<i>Quercus rubra</i>	ALIVE	22.8	5/25/2021
540	Northern Red Oak	<i>Quercus rubra</i>	ALIVE	23.7	5/25/2021
542	Black Birch	<i>Betula lenta</i>	ALIVE	23.0	5/25/2021
543	Red Maple	<i>Acer rubrum</i>	ALIVE	21.5	5/25/2021
547	Red Maple	<i>Acer rubrum</i>	ALIVE	18.0	5/25/2021
557	Shagbark Hickory	<i>Carya ovata</i>	ALIVE	17.0	5/25/2021
560	Red Maple	<i>Acer rubrum</i>	ALIVE	9.0	5/25/2021
563	Sugar Maple	<i>Acer saccharum</i>	ALIVE	22.0	5/25/2021
566	Sugar Maple	<i>Acer saccharum</i>	ALIVE	19.0	5/25/2021
567	Sugar Maple	<i>Acer saccharum</i>	ALIVE	14.0	5/25/2021
570	Shagbark Hickory	<i>Carya ovata</i>	ALIVE	12.0	5/25/2021
575	Sugar Maple	<i>Acer saccharum</i>	ALIVE	11.0	5/25/2021
576	Sugar Maple	<i>Acer saccharum</i>	ALIVE	12.0	5/25/2021
578	Sugar Maple	<i>Acer saccharum</i>	ALIVE	8.0	5/25/2021
580	Pig Nut Hickory	<i>Carya glabra</i>	ALIVE	25.0	5/25/2021
581	White Oak	<i>Quercus alba</i>	ALIVE	9.0	5/25/2021
582	White Oak	<i>Quercus alba</i>	ALIVE	17.0	5/25/2021
583	Red Maple	<i>Acer rubrum</i>	ALIVE	20.5	5/25/2021
584	Northern Red Oak	<i>Quercus rubra</i>	ALIVE	34.0	5/25/2021
585	White Oak	<i>Quercus alba</i>	ALIVE	21.0	5/25/2021
586	White Oak	<i>Quercus alba</i>	ALIVE	20.0	5/25/2021
587	Sugar Maple	<i>Acer saccharum</i>	ALIVE	10.0	5/25/2021
588	Pig Nut Hickory	<i>Carya glabra</i>	ALIVE	17.0	5/25/2021
589	Northern Red Oak	<i>Quercus rubra</i>	ALIVE	23.0	5/25/2021
590	Sugar Maple	<i>Acer saccharum</i>	ALIVE	16.0	5/25/2021
591	Red Maple	<i>Acer rubrum</i>	ALIVE	22.5	5/25/2021
592	Pig Nut Hickory	<i>Carya glabra</i>	ALIVE	15.0	5/25/2021
593	Sugar Maple	<i>Acer saccharum</i>	ALIVE	11.0	5/25/2021
594	Sugar Maple	<i>Acer saccharum</i>	ALIVE	14.5	5/25/2021
595	Northern Red Oak	<i>Quercus rubra</i>	ALIVE	12.0	5/25/2021
596	Pig Nut Hickory	<i>Carya glabra</i>	ALIVE	16.0	5/25/2021
597	Sugar Maple	<i>Acer saccharum</i>	ALIVE	16.0	5/25/2021
598	Pig Nut Hickory	<i>Carya glabra</i>	ALIVE	17.0	5/25/2021
599	Sugar Maple	<i>Acer saccharum</i>	ALIVE	13.0	5/25/2021
600	Northern Red Oak	<i>Quercus rubra</i>	ALIVE	14.0	5/25/2021
601	Red Maple	<i>Acer rubrum</i>	ALIVE	11.4	5/25/2021
602	Black Birch	<i>Betula lenta</i>	ALIVE	16.3	5/25/2021
603	Black Birch	<i>Betula lenta</i>	ALIVE	8.3	5/25/2021
604	Northern Red Oak	<i>Quercus rubra</i>	ALIVE	15.0	5/25/2021
605	Sugar Maple	<i>Acer saccharum</i>	ALIVE	26.0	5/25/2021
606	Sugar Maple	<i>Acer saccharum</i>	ALIVE	10.0	5/25/2021
607	Red Maple	<i>Acer rubrum</i>	ALIVE	8.0	5/25/2021
608	Sugar Maple	<i>Acer saccharum</i>	ALIVE	9.5	5/25/2021

Tree ID	Common Name	Scientific Name	Status	DBH (inches)	Date Surveyed
609	Red Maple	<i>Acer rubrum</i>	ALIVE	15.5	5/25/2021
610	Black Birch	<i>Betula lenta</i>	ALIVE	8.0	5/25/2021
611	Sugar Maple	<i>Acer saccharum</i>	ALIVE	15.5	5/25/2021
612	Northern Red Oak	<i>Quercus rubra</i>	ALIVE	27.0	5/25/2021
613	Sugar Maple	<i>Acer saccharum</i>	ALIVE	11.5	5/25/2021
614	Sugar Maple	<i>Acer saccharum</i>	ALIVE	17.0	5/25/2021
615	Sugar Maple	<i>Acer saccharum</i>	ALIVE	8.0	5/25/2021
616	Red Maple	<i>Acer rubrum</i>	ALIVE	17.0	5/25/2021
617	Pig Nut Hickory	<i>Carya glabra</i>	ALIVE	8.0	5/25/2021
618	Shagbark Hickory	<i>Carya ovata</i>	ALIVE	8.0	5/25/2021
619	Red Maple	<i>Acer rubrum</i>	ALIVE	12.0	5/25/2021
620	Sugar Maple	<i>Acer saccharum</i>	ALIVE	8.0	5/25/2021
621	Sugar Maple	<i>Acer saccharum</i>	ALIVE	10.5	5/25/2021
622	Shagbark Hickory	<i>Carya ovata</i>	ALIVE	18.0	5/25/2021
623	Red Maple	<i>Acer rubrum</i>	ALIVE	9.0	5/25/2021
624	White Oak	<i>Quercus alba</i>	ALIVE	19.0	5/25/2021
625	Northern Red Oak	<i>Quercus rubra</i>	ALIVE	14.2	5/25/2021
626	Red Maple	<i>Acer rubrum</i>	ALIVE	11.0	5/25/2021
627	Sugar Maple	<i>Acer saccharum</i>	ALIVE	20.0	5/25/2021
629	Sugar Maple	<i>Acer saccharum</i>	ALIVE	13.0	5/25/2021
632	Sugar Maple	<i>Acer saccharum</i>	ALIVE	9.0	5/25/2021
633	Shagbark Hickory	<i>Carya ovata</i>	ALIVE	24.0	5/25/2021
650	American Beech	<i>Fagus grandifolia</i>	ALIVE	12.0	5/25/2021
653	Black Birch	<i>Betula lenta</i>	ALIVE	19.0	5/25/2021
657	American Beech	<i>Fagus grandifolia</i>	ALIVE	16.0	5/25/2021
661	Sugar Maple	<i>Acer saccharum</i>	ALIVE	14.0	5/25/2021
662	American Beech	<i>Fagus grandifolia</i>	ALIVE	20.0	5/25/2021
664	Sugar Maple	<i>Acer saccharum</i>	ALIVE	10.0	5/25/2021
666	Sugar Maple	<i>Acer saccharum</i>	ALIVE	8.0	5/25/2021
668	Sugar Maple	<i>Acer saccharum</i>	ALIVE	36.0	5/25/2021
671	Sugar Maple	<i>Acer saccharum</i>	ALIVE	14.0	5/25/2021
674	Sugar Maple	<i>Acer saccharum</i>	ALIVE	13.0	5/25/2021
677	Shagbark Hickory	<i>Carya ovata</i>	ALIVE	11.0	5/25/2021
679	Sugar Maple	<i>Acer saccharum</i>	ALIVE	15.0	5/25/2021
682	Sugar Maple	<i>Acer saccharum</i>	ALIVE	11.0	5/25/2021
683	Sugar Maple	<i>Acer saccharum</i>	ALIVE	15.0	5/25/2021
686	Black Birch	<i>Betula lenta</i>	ALIVE	8.0	5/25/2021
688	Sugar Maple	<i>Acer saccharum</i>	ALIVE	23.0	5/25/2021
689	Northern Red Oak	<i>Quercus rubra</i>	ALIVE	27.5	5/25/2021
690	Eastern White Pine	<i>Pinus strobus</i>	ALIVE	17.0	5/25/2021
691	Red Maple	<i>Acer rubrum</i>	ALIVE	12.0	5/25/2021
692	Chestnut Oak	<i>Quercus montana</i>	ALIVE	10.0	5/25/2021
693	American Beech	<i>Fagus grandifolia</i>	ALIVE	10.2	5/25/2021
694	Northern Red Oak	<i>Quercus rubra</i>	ALIVE	29.0	5/25/2021
695	Black Birch	<i>Betula lenta</i>	ALIVE	16.0	5/25/2021
696	Northern Red Oak	<i>Quercus rubra</i>	ALIVE	10.3	5/25/2021

Tree ID	Common Name	Scientific Name	Status	DBH (inches)	Date Surveyed
697	Red Maple	<i>Acer rubrum</i>	ALIVE	13.0	5/25/2021
698	Northern Red Oak	<i>Quercus rubra</i>	ALIVE	9.0	5/25/2021
699	Northern Red Oak	<i>Quercus rubra</i>	ALIVE	19.5	5/25/2021
700	Northern Red Oak	<i>Quercus rubra</i>	ALIVE	13.0	5/25/2021
701	Red Maple	<i>Acer rubrum</i>	ALIVE	14.5	5/25/2021
702	Northern Red Oak	<i>Quercus rubra</i>	ALIVE	13.0	5/25/2021
703	Red Maple	<i>Acer rubrum</i>	ALIVE	15.5	5/25/2021
704	Sugar Maple	<i>Acer saccharum</i>	ALIVE	9.0	5/25/2021
705	Red Maple	<i>Acer rubrum</i>	ALIVE	18.0	5/25/2021
706	Sugar Maple	<i>Acer saccharum</i>	ALIVE	18.5	5/25/2021
707	Northern Red Oak	<i>Quercus rubra</i>	ALIVE	32.0	5/25/2021
708	Shagbark Hickory	<i>Carya ovata</i>	ALIVE	19.0	5/25/2021
709	Shagbark Hickory	<i>Carya ovata</i>	ALIVE	12.0	5/25/2021
710	Sugar Maple	<i>Acer saccharum</i>	ALIVE	10.0	5/25/2021
711	Northern Red Oak	<i>Quercus rubra</i>	ALIVE	16.0	5/25/2021
712	Black Birch	<i>Betula lenta</i>	ALIVE	9.5	5/25/2021
713	Black Birch	<i>Betula lenta</i>	ALIVE	8.0	5/25/2021
714	Northern Red Oak	<i>Quercus rubra</i>	ALIVE	41.5	5/25/2021
715	Northern Red Oak	<i>Quercus rubra</i>	ALIVE	25.0	5/25/2021
716	Northern Red Oak	<i>Quercus rubra</i>	ALIVE	39.3	5/25/2021
717	Black Birch	<i>Betula lenta</i>	ALIVE	14.0	5/25/2021
718	Northern Red Oak	<i>Quercus rubra</i>	ALIVE	21.2	5/25/2021
720	Shagbark Hickory	<i>Carya ovata</i>	ALIVE	13.0	5/25/2021
721	Black Birch	<i>Betula lenta</i>	ALIVE	16.5	5/25/2021
722	Black Birch	<i>Betula lenta</i>	ALIVE	14.0	5/25/2021
723	Black Birch	<i>Betula lenta</i>	ALIVE	13.0	5/25/2021
724	Sugar Maple	<i>Acer saccharum</i>	ALIVE	13.0	5/25/2021
725	Sugar Maple	<i>Acer saccharum</i>	ALIVE	10.0	5/25/2021
726	Sugar Maple	<i>Acer saccharum</i>	ALIVE	15.0	5/25/2021
727	Red Maple	<i>Acer rubrum</i>	ALIVE	17.0	5/25/2021
728	Red Maple	<i>Acer rubrum</i>	ALIVE	15.0	5/25/2021
729	Sugar Maple	<i>Acer saccharum</i>	ALIVE	9.0	5/25/2021
730	Sugar Maple	<i>Acer saccharum</i>	DEAD	22.0	5/25/2021
731	Black Birch	<i>Betula lenta</i>	ALIVE	20.0	5/25/2021
732	Northern Red Oak	<i>Quercus rubra</i>	ALIVE	31.0	5/25/2021
733	Red Maple	<i>Acer rubrum</i>	ALIVE	12.5	5/25/2021
734	Sugar Maple	<i>Acer saccharum</i>	ALIVE	8.0	5/25/2021
735	Black Birch	<i>Betula lenta</i>	ALIVE	11.0	5/25/2021
736	Sugar Maple	<i>Acer saccharum</i>	ALIVE	16.0	5/25/2021
737	Northern Red Oak	<i>Quercus rubra</i>	ALIVE	31.5	5/25/2021
738	Sugar Maple	<i>Acer saccharum</i>	ALIVE	9.0	5/25/2021
739	Red Maple	<i>Acer rubrum</i>	ALIVE	14.0	5/25/2021
740	Sugar Maple	<i>Acer saccharum</i>	ALIVE	19.0	5/25/2021
741	Sugar Maple	<i>Acer saccharum</i>	ALIVE	11.0	5/25/2021
742	Sugar Maple	<i>Acer saccharum</i>	ALIVE	14.0	5/25/2021
743	Northern Red Oak	<i>Quercus rubra</i>	ALIVE	23.0	5/25/2021

Tree ID	Common Name	Scientific Name	Status	DBH (inches)	Date Surveyed
744	Sugar Maple	<i>Acer saccharum</i>	ALIVE	16.0	5/25/2021
745	Sugar Maple	<i>Acer saccharum</i>	ALIVE	29.0	5/25/2021
746	Sugar Maple	<i>Acer saccharum</i>	ALIVE	9.0	5/25/2021
747	Sugar Maple	<i>Acer saccharum</i>	ALIVE	37.0	5/25/2021
748	Sugar Maple	<i>Acer saccharum</i>	ALIVE	11.0	5/25/2021
749	Sugar Maple	<i>Acer saccharum</i>	ALIVE	27.0	5/25/2021
750	Sugar Maple	<i>Acer saccharum</i>	ALIVE	15.0	5/25/2021
751	Black Birch	<i>Betula lenta</i>	ALIVE	15.0	5/25/2021
752	Sugar Maple	<i>Acer saccharum</i>	ALIVE	23.0	5/25/2021
753	Sugar Maple	<i>Acer saccharum</i>	ALIVE	11.0	5/25/2021
754	Sugar Maple	<i>Acer saccharum</i>	ALIVE	18.0	5/25/2021
755	Black Birch	<i>Betula lenta</i>	DEAD	8.0	5/25/2021
756	Northern Red Oak	<i>Quercus rubra</i>	ALIVE	26.0	5/25/2021
757	Sugar Maple	<i>Acer saccharum</i>	ALIVE	19.5	5/26/2021
758	Sugar Maple	<i>Acer saccharum</i>	ALIVE	20.0	5/26/2021
759	Black Birch	<i>Betula lenta</i>	ALIVE	13.0	5/26/2021
760	Sugar Maple	<i>Acer saccharum</i>	ALIVE	14.5	5/26/2021
761	Sugar Maple	<i>Acer saccharum</i>	ALIVE	9.0	5/26/2021
762	Sugar Maple	<i>Acer saccharum</i>	ALIVE	13.0	5/26/2021
763	Northern Red Oak	<i>Quercus rubra</i>	ALIVE	14.0	5/26/2021
764	Sugar Maple	<i>Acer saccharum</i>	ALIVE	14.0	5/26/2021
765	Northern Red Oak	<i>Quercus rubra</i>	ALIVE	33.0	5/26/2021
766	Sugar Maple	<i>Acer saccharum</i>	ALIVE	15.0	5/26/2021
767	Northern Red Oak	<i>Quercus rubra</i>	ALIVE	9.0	5/26/2021
768	Black Birch	<i>Betula lenta</i>	ALIVE	22.0	5/26/2021
769	Northern Red Oak	<i>Quercus rubra</i>	ALIVE	12.0	5/26/2021
770	Northern Red Oak	<i>Quercus rubra</i>	ALIVE	23.0	5/26/2021
771	Northern Red Oak	<i>Quercus rubra</i>	ALIVE	17.0	5/26/2021
772	Chestnut Oak	<i>Quercus montana</i>	ALIVE	17.0	5/26/2021
773	Northern Red Oak	<i>Quercus rubra</i>	ALIVE	29.0	5/26/2021
774	Northern Red Oak	<i>Quercus rubra</i>	ALIVE	22.5	5/26/2021
775	Sugar Maple	<i>Acer saccharum</i>	ALIVE	19.0	5/26/2021
776	White Oak	<i>Quercus alba</i>	ALIVE	9.5	5/26/2021
777	Black Birch	<i>Betula lenta</i>	ALIVE	9.0	5/26/2021
778	Sugar Maple	<i>Acer saccharum</i>	ALIVE	27.0	5/26/2021
779	Northern Red Oak	<i>Quercus rubra</i>	ALIVE	17.0	5/26/2021
780	Northern Red Oak	<i>Quercus rubra</i>	ALIVE	14.5	5/26/2021
781	Northern Red Oak	<i>Quercus rubra</i>	ALIVE	12.0	5/26/2021
782	Northern Red Oak	<i>Quercus rubra</i>	ALIVE	15.0	5/26/2021
783	Northern Red Oak	<i>Quercus rubra</i>	ALIVE	14.0	5/26/2021
784	Sugar Maple	<i>Acer saccharum</i>	ALIVE	9.5	5/26/2021
785	Sugar Maple	<i>Acer saccharum</i>	ALIVE	8.0	5/26/2021
786	American Beech	<i>Fagus grandifolia</i>	ALIVE	11.0	5/26/2021
787	Sugar Maple	<i>Acer saccharum</i>	ALIVE	8.0	5/26/2021
788	Sugar Maple	<i>Acer saccharum</i>	ALIVE	9.0	5/26/2021
789	Black Cherry	<i>Prunus serotina</i>	ALIVE	13.8	5/26/2021

Tree ID	Common Name	Scientific Name	Status	DBH (inches)	Date Surveyed
790	Sugar Maple	<i>Acer saccharum</i>	ALIVE	14.0	5/26/2021
791	Sugar Maple	<i>Acer saccharum</i>	ALIVE	13.0	5/26/2021
792	Sugar Maple	<i>Acer saccharum</i>	ALIVE	15.0	5/26/2021
793	Shagbark Hickory	<i>Carya ovata</i>	ALIVE	14.0	5/26/2021
794	Sugar Maple	<i>Acer saccharum</i>	ALIVE	20.0	5/26/2021
795	Sugar Maple	<i>Acer saccharum</i>	ALIVE	10.0	5/26/2021
796	Sugar Maple	<i>Acer saccharum</i>	ALIVE	11.0	5/26/2021
797	Sugar Maple	<i>Acer saccharum</i>	ALIVE	17.0	5/26/2021
798	Sugar Maple	<i>Acer saccharum</i>	ALIVE	26.0	5/26/2021
799	Sugar Maple	<i>Acer saccharum</i>	ALIVE	12.0	5/26/2021
800	Red Maple	<i>Acer rubrum</i>	ALIVE	9.3	5/26/2021
801	Sugar Maple	<i>Acer saccharum</i>	ALIVE	9.0	5/26/2021
802	Sugar Maple	<i>Acer saccharum</i>	ALIVE	21.0	5/26/2021
803	Northern Red Oak	<i>Quercus rubra</i>	ALIVE	27.7	5/26/2021
804	Northern Red Oak	<i>Quercus rubra</i>	ALIVE	11.0	5/26/2021
805	Sugar Maple	<i>Acer saccharum</i>	ALIVE	17.0	5/26/2021
806	Northern Red Oak	<i>Quercus rubra</i>	ALIVE	16.0	5/26/2021
807	Sugar Maple	<i>Acer saccharum</i>	ALIVE	8.7	5/26/2021
808	Sugar Maple	<i>Acer saccharum</i>	ALIVE	8.0	5/26/2021
809	Northern Red Oak	<i>Quercus rubra</i>	ALIVE	21.0	5/26/2021
810	Northern Red Oak	<i>Quercus rubra</i>	ALIVE	17.5	5/26/2021
811	Sugar Maple	<i>Acer saccharum</i>	ALIVE	19.0	5/26/2021
812	Northern Red Oak	<i>Quercus rubra</i>	ALIVE	15.0	5/26/2021
813	Northern Red Oak	<i>Quercus rubra</i>	ALIVE	14.0	5/26/2021
814	Sugar Maple	<i>Acer saccharum</i>	ALIVE	9.0	5/26/2021
816	Northern Red Oak	<i>Quercus rubra</i>	ALIVE	19.0	5/26/2021
817	Northern Red Oak	<i>Quercus rubra</i>	ALIVE	19.0	5/26/2021
818	Sugar Maple	<i>Acer saccharum</i>	ALIVE	9.0	5/26/2021
846	American Beech	<i>Fagus grandifolia</i>	ALIVE	8.0	5/26/2021
847	Red Maple	<i>Acer rubrum</i>	ALIVE	8.0	5/26/2021
849	Sugar Maple	<i>Acer saccharum</i>	ALIVE	8.0	5/26/2021
850	Black Birch	<i>Betula lenta</i>	ALIVE	8.0	5/26/2021
851	Northern Red Oak	<i>Quercus rubra</i>	ALIVE	8.0	5/26/2021
853	Red Maple	<i>Acer rubrum</i>	ALIVE	8.0	5/26/2021
854	Red Maple	<i>Acer rubrum</i>	ALIVE	8.0	5/26/2021
855	Black Gum	<i>Nyssa sylvatica</i>	ALIVE	8.0	5/26/2021
856	Red Maple	<i>Acer rubrum</i>	ALIVE	8.0	5/26/2021
858	Sugar Maple	<i>Acer saccharum</i>	ALIVE	8.0	5/26/2021
860	Northern Red Oak	<i>Quercus rubra</i>	ALIVE	8.0	5/26/2021
862	Sugar Maple	<i>Acer saccharum</i>	ALIVE	12.4	5/26/2021
863	Northern Red Oak	<i>Quercus rubra</i>	ALIVE	16.7	5/26/2021
864	Northern Red Oak	<i>Quercus rubra</i>	ALIVE	20.0	5/26/2021
867	Sugar Maple	<i>Acer saccharum</i>	ALIVE	13.5	5/26/2021
869	Northern Red Oak	<i>Quercus rubra</i>	ALIVE	25.5	5/26/2021
870	Sassafras	<i>Sassafras albidum</i>	ALIVE	11.0	5/26/2021
871	Black Birch	<i>Betula lenta</i>	ALIVE	23.0	5/26/2021

Tree ID	Common Name	Scientific Name	Status	DBH (inches)	Date Surveyed
872	Sugar Maple	<i>Acer saccharum</i>	ALIVE	11.0	5/26/2021
873	Northern Red Oak	<i>Quercus rubra</i>	ALIVE	18.5	5/26/2021
874	Northern Red Oak	<i>Quercus rubra</i>	ALIVE	19.0	5/26/2021
875	Sugar Maple	<i>Acer saccharum</i>	ALIVE	13.7	5/26/2021
877	Northern Red Oak	<i>Quercus rubra</i>	ALIVE	17.5	5/26/2021
878	Black Birch	<i>Betula lenta</i>	ALIVE	8.3	5/26/2021
879	Black Birch	<i>Betula lenta</i>	ALIVE	8.2	5/26/2021
881	Northern Red Oak	<i>Quercus rubra</i>	ALIVE	12.2	5/26/2021
883	Black Birch	<i>Betula lenta</i>	ALIVE	16.0	5/26/2021
885	Black Birch	<i>Betula lenta</i>	ALIVE	9.5	5/26/2021
886	Black Birch	<i>Betula lenta</i>	DEAD	29.0	5/26/2021
887	Sugar Maple	<i>Acer saccharum</i>	ALIVE	23.0	5/26/2021
888	Sugar Maple	<i>Acer saccharum</i>	ALIVE	8.0	5/26/2021
889	Northern Red Oak	<i>Quercus rubra</i>	ALIVE	11.7	5/26/2021
890	Red Maple	<i>Acer rubrum</i>	ALIVE	16.0	5/26/2021
891	Sugar Maple	<i>Acer saccharum</i>	ALIVE	8.0	5/26/2021
892	Black Birch	<i>Betula lenta</i>	ALIVE	14.4	5/26/2021
893	White Oak	<i>Quercus alba</i>	ALIVE	9.0	5/26/2021
894	Sugar Maple	<i>Acer saccharum</i>	ALIVE	12.0	5/26/2021
895	Eastern Cottonwood	<i>Populus deltoides</i>	ALIVE	13.3	5/26/2021
896	Sugar Maple	<i>Acer saccharum</i>	ALIVE	8.0	5/26/2021
897	Eastern Cottonwood	<i>Populus deltoides</i>	ALIVE	16.2	5/26/2021
898	Sugar Maple	<i>Acer saccharum</i>	ALIVE	8.0	5/26/2021
899	Eastern Cottonwood	<i>Populus deltoides</i>	ALIVE	14.3	5/26/2021
900	Sugar Maple	<i>Acer saccharum</i>	ALIVE	9.5	5/26/2021
901	Black Birch	<i>Betula lenta</i>	ALIVE	9.6	5/26/2021
902	Black Birch	<i>Betula lenta</i>	ALIVE	10.0	5/26/2021
903	Sugar Maple	<i>Acer saccharum</i>	ALIVE	10.0	5/26/2021
904	Black Birch	<i>Betula lenta</i>	ALIVE	15.0	5/26/2021
905	Northern Red Oak	<i>Quercus rubra</i>	ALIVE	20.0	5/26/2021
906	Eastern Cottonwood	<i>Populus deltoides</i>	ALIVE	27.0	5/26/2021
907	American Beech	<i>Fagus grandifolia</i>	ALIVE	12.0	5/26/2021
908	Eastern Cottonwood	<i>Populus deltoides</i>	ALIVE	23.5	5/26/2021
909	Northern Red Oak	<i>Quercus rubra</i>	ALIVE	16.0	5/26/2021
910	Eastern Cottonwood	<i>Populus deltoides</i>	ALIVE	20.5	5/26/2021
911	Sugar Maple	<i>Acer saccharum</i>	ALIVE	15.0	5/26/2021
912	Sugar Maple	<i>Acer saccharum</i>	ALIVE	13.3	5/26/2021
913	Sugar Maple	<i>Acer saccharum</i>	ALIVE	10.0	5/26/2021
914	Black Birch	<i>Betula lenta</i>	ALIVE	12.5	5/26/2021
915	Sugar Maple	<i>Acer saccharum</i>	ALIVE	8.0	5/26/2021
916	Sugar Maple	<i>Acer saccharum</i>	ALIVE	9.0	5/26/2021
917	Sugar Maple	<i>Acer saccharum</i>	ALIVE	10.0	5/26/2021
918	Black Birch	<i>Betula lenta</i>	ALIVE	9.7	5/26/2021
919	White Oak	<i>Quercus alba</i>	ALIVE	18.0	5/26/2021
920	Black Birch	<i>Betula lenta</i>	ALIVE	10.7	5/26/2021
921	Northern Red Oak	<i>Quercus rubra</i>	ALIVE	9.8	5/26/2021

Tree ID	Common Name	Scientific Name	Status	DBH (inches)	Date Surveyed
922	Black Birch	<i>Betula lenta</i>	ALIVE	15.0	5/26/2021
923	Sugar Maple	<i>Acer saccharum</i>	ALIVE	17.0	5/26/2021
924	Sugar Maple	<i>Acer saccharum</i>	ALIVE	20.0	5/26/2021
925	Black Birch	<i>Betula lenta</i>	ALIVE	13.2	5/26/2021
926	Sugar Maple	<i>Acer saccharum</i>	ALIVE	9.4	5/26/2021
927	Northern Red Oak	<i>Quercus rubra</i>	ALIVE	23.0	5/26/2021
928	Northern Red Oak	<i>Quercus rubra</i>	ALIVE	19.3	5/26/2021
929	Northern Red Oak	<i>Quercus rubra</i>	ALIVE	9.7	5/26/2021
930	Sassafras	<i>Sassafras albidum</i>	ALIVE	12.0	5/26/2021
931	Northern Red Oak	<i>Quercus rubra</i>	ALIVE	18.3	5/26/2021
932	Sugar Maple	<i>Acer saccharum</i>	ALIVE	14.0	5/26/2021
933	Sugar Maple	<i>Acer saccharum</i>	ALIVE	13.0	5/26/2021
934	Sugar Maple	<i>Acer saccharum</i>	ALIVE	10.0	5/26/2021
935	Sugar Maple	<i>Acer saccharum</i>	ALIVE	13.3	5/26/2021
936	Sassafras	<i>Sassafras albidum</i>	ALIVE	21.0	5/26/2021
937	Sugar Maple	<i>Acer saccharum</i>	ALIVE	25.4	5/26/2021
938	Sassafras	<i>Sassafras albidum</i>	ALIVE	14.0	5/26/2021
939	Sassafras	<i>Sassafras albidum</i>	DEAD	15.0	5/26/2021
940	Northern Red Oak	<i>Quercus rubra</i>	ALIVE	22.8	5/26/2021
941	Sassafras	<i>Sassafras albidum</i>	ALIVE	11.0	5/26/2021
942	Black Birch	<i>Betula lenta</i>	ALIVE	11.2	5/26/2021
943	Sugar Maple	<i>Acer saccharum</i>	ALIVE	11.3	5/26/2021
944	Sassafras	<i>Sassafras albidum</i>	DEAD	14.0	5/26/2021
945	Shagbark Hickory	<i>Carya ovata</i>	ALIVE	9.6	5/26/2021
946	Sugar Maple	<i>Acer saccharum</i>	ALIVE	11.0	5/26/2021
947	Red Maple	<i>Acer rubrum</i>	ALIVE	18.0	5/26/2021
948	Sugar Maple	<i>Acer saccharum</i>	ALIVE	8.0	5/26/2021
949	Shagbark Hickory	<i>Carya ovata</i>	ALIVE	11.5	5/26/2021
950	Red Maple	<i>Acer rubrum</i>	ALIVE	8.0	5/26/2021
951	Pig Nut Hickory	<i>Carya glabra</i>	ALIVE	25.0	5/26/2021
952	Pig Nut Hickory	<i>Carya glabra</i>	ALIVE	14.5	5/26/2021
953	Sugar Maple	<i>Acer saccharum</i>	ALIVE	10.7	5/26/2021
954	Shagbark Hickory	<i>Carya ovata</i>	ALIVE	13.0	5/26/2021
955	Shagbark Hickory	<i>Carya ovata</i>	ALIVE	11.0	5/26/2021
956	Shagbark Hickory	<i>Carya ovata</i>	ALIVE	16.0	5/26/2021
957	Northern Red Oak	<i>Quercus rubra</i>	ALIVE	18.6	5/26/2021
958	Sugar Maple	<i>Acer saccharum</i>	ALIVE	15.0	5/26/2021
959	Red Maple	<i>Acer rubrum</i>	ALIVE	10.3	5/26/2021
960	Northern Red Oak	<i>Quercus rubra</i>	DEAD	15.0	5/26/2021
961	Sugar Maple	<i>Acer saccharum</i>	ALIVE	10.8	5/26/2021
962	Sugar Maple	<i>Acer saccharum</i>	ALIVE	13.0	5/26/2021
963	Sugar Maple	<i>Acer saccharum</i>	ALIVE	10.1	5/26/2021
964	Sugar Maple	<i>Acer saccharum</i>	ALIVE	14.0	5/26/2021
965	Sugar Maple	<i>Acer saccharum</i>	ALIVE	20.0	5/26/2021
966	Sugar Maple	<i>Acer saccharum</i>	ALIVE	8.3	5/26/2021
967	Sugar Maple	<i>Acer saccharum</i>	ALIVE	8.3	5/26/2021

Tree ID	Common Name	Scientific Name	Status	DBH (inches)	Date Surveyed
968	White Oak	<i>Quercus alba</i>	ALIVE	20.0	5/26/2021
969	Sugar Maple	<i>Acer saccharum</i>	ALIVE	13.0	5/26/2021
970	Tulip Tree	<i>Liriodendron tulipifera</i>	ALIVE	13.6	5/26/2021
971	Sugar Maple	<i>Acer saccharum</i>	ALIVE	8.1	5/26/2021
972	Sugar Maple	<i>Acer saccharum</i>	ALIVE	17.0	5/26/2021
973	Red Maple	<i>Acer rubrum</i>	ALIVE	12.7	5/26/2021
974	Sugar Maple	<i>Acer saccharum</i>	ALIVE	12.0	5/26/2021
976	Sugar Maple	<i>Acer saccharum</i>	ALIVE	13.0	5/26/2021
978	White Oak	<i>Quercus alba</i>	ALIVE	19.0	5/26/2021
980	White Oak	<i>Quercus alba</i>	ALIVE	14.0	5/26/2021
981	Sugar Maple	<i>Acer saccharum</i>	ALIVE	17.0	5/26/2021
983	Sugar Maple	<i>Acer saccharum</i>	DEAD	16.0	5/26/2021
986	White Oak	<i>Quercus alba</i>	ALIVE	24.0	5/26/2021
987	Sugar Maple	<i>Acer saccharum</i>	ALIVE	18.0	5/26/2021
989	Sugar Maple	<i>Acer saccharum</i>	ALIVE	15.0	5/26/2021
992	Sugar Maple	<i>Acer saccharum</i>	ALIVE	16.0	5/26/2021
993	Sugar Maple	<i>Acer saccharum</i>	ALIVE	8.0	5/26/2021
1008	Sugar Maple	<i>Acer saccharum</i>	ALIVE	14.0	5/26/2021
1009	Tulip Tree	<i>Liriodendron tulipifera</i>	ALIVE	9.0	5/26/2021
1010	Tulip Tree	<i>Liriodendron tulipifera</i>	ALIVE	15.0	5/26/2021
1012	Tulip Tree	<i>Liriodendron tulipifera</i>	ALIVE	15.0	5/26/2021
1013	Sugar Maple	<i>Acer saccharum</i>	ALIVE	11.0	5/26/2021
1016	Sugar Maple	<i>Acer saccharum</i>	ALIVE	17.0	5/26/2021
1017	Sugar Maple	<i>Acer saccharum</i>	ALIVE	14.0	5/26/2021
1019	Sugar Maple	<i>Acer saccharum</i>	ALIVE	15.0	5/26/2021
1022	White Oak	<i>Quercus alba</i>	ALIVE	26.0	5/26/2021
1024	Northern Red Oak	<i>Quercus rubra</i>	ALIVE	23.0	5/26/2021
1025	Sugar Maple	<i>Acer saccharum</i>	ALIVE	12.0	5/26/2021
1026	Sassafras	<i>Sassafras albidum</i>	ALIVE	15.0	5/26/2021
1027	Shagbark Hickory	<i>Carya ovata</i>	ALIVE	9.0	5/26/2021
1028	Sugar Maple	<i>Acer saccharum</i>	ALIVE	12.0	5/26/2021
1029	Black Birch	<i>Betula lenta</i>	ALIVE	30.0	5/26/2021
1030	Black Birch	<i>Betula lenta</i>	ALIVE	43.0	5/26/2021
1031	Sassafras	<i>Sassafras albidum</i>	ALIVE	23.0	5/26/2021
1032	Sugar Maple	<i>Acer saccharum</i>	ALIVE	17.0	5/26/2021
1033	Sassafras	<i>Sassafras albidum</i>	ALIVE	15.0	5/26/2021
1034	Sugar Maple	<i>Acer saccharum</i>	ALIVE	11.0	5/26/2021
1035	Northern Red Oak	<i>Quercus rubra</i>	ALIVE	17.0	5/26/2021
1040	Shagbark Hickory	<i>Carya ovata</i>	ALIVE	21.5	5/26/2021
1041	Sugar Maple	<i>Acer saccharum</i>	ALIVE	10.4	5/26/2021
1042	Sugar Maple	<i>Acer saccharum</i>	ALIVE	13.7	5/26/2021
1043	White Oak	<i>Quercus alba</i>	DEAD	19.0	5/26/2021
1044	Sugar Maple	<i>Acer saccharum</i>	ALIVE	8.3	5/26/2021
1045	Sugar Maple	<i>Acer saccharum</i>	ALIVE	9.2	5/26/2021
1046	Sugar Maple	<i>Acer saccharum</i>	ALIVE	8.0	5/26/2021
1047	Sugar Maple	<i>Acer saccharum</i>	ALIVE	8.2	5/26/2021

Tree ID	Common Name	Scientific Name	Status	DBH (inches)	Date Surveyed
1048	Northern Red Oak	<i>Quercus rubra</i>	ALIVE	22.4	5/26/2021
1049	Sugar Maple	<i>Acer saccharum</i>	ALIVE	15.3	5/26/2021
1050	Sugar Maple	<i>Acer saccharum</i>	ALIVE	14.5	5/26/2021
1051	White Oak	<i>Quercus alba</i>	ALIVE	18.0	5/26/2021
1052	Eastern Cottonwood	<i>Populus deltoides</i>	ALIVE	14.2	5/26/2021
1053	Eastern Cottonwood	<i>Populus deltoides</i>	ALIVE	14.0	5/26/2021
1054	Sugar Maple	<i>Acer saccharum</i>	ALIVE	10.0	5/26/2021
1055	Sugar Maple	<i>Acer saccharum</i>	ALIVE	13.0	5/26/2021
1056	Sugar Maple	<i>Acer saccharum</i>	ALIVE	9.0	5/26/2021
1057	Sugar Maple	<i>Acer saccharum</i>	ALIVE	10.7	5/26/2021
1058	Eastern Cottonwood	<i>Populus deltoides</i>	ALIVE	13.3	5/26/2021
1059	Pig Nut Hickory	<i>Carya glabra</i>	ALIVE	19.0	5/26/2021
1060	Sugar Maple	<i>Acer saccharum</i>	ALIVE	8.7	5/26/2021
1061	Eastern Cottonwood	<i>Populus deltoides</i>	ALIVE	13.6	5/26/2021
1062	Sugar Maple	<i>Acer saccharum</i>	ALIVE	17.0	5/26/2021
1063	Northern Red Oak	<i>Quercus rubra</i>	ALIVE	16.3	5/26/2021
1064	Northern Red Oak	<i>Quercus rubra</i>	ALIVE	12.5	5/26/2021
1065	Red Maple	<i>Acer rubrum</i>	ALIVE	22.0	5/26/2021
1066	Sugar Maple	<i>Acer saccharum</i>	ALIVE	8.0	5/26/2021
1067	Sugar Maple	<i>Acer saccharum</i>	ALIVE	14.0	5/26/2021
1068	Black Birch	<i>Betula lenta</i>	ALIVE	13.3	5/26/2021
1069	Eastern Cottonwood	<i>Populus deltoides</i>	ALIVE	14.0	5/26/2021
1070	Red Maple	<i>Acer rubrum</i>	DEAD	12.0	5/26/2021
1071	Sugar Maple	<i>Acer saccharum</i>	ALIVE	9.0	5/26/2021
1072	Tulip Tree	<i>Liriodendron tulipifera</i>	ALIVE	14.0	5/26/2021
1073	Sugar Maple	<i>Acer saccharum</i>	ALIVE	12.0	5/26/2021
1074	Black Birch	<i>Betula lenta</i>	ALIVE	10.0	5/26/2021
1075	Red Maple	<i>Acer rubrum</i>	ALIVE	10.4	5/26/2021
1076	Red Maple	<i>Acer rubrum</i>	ALIVE	9.4	5/26/2021
1077	Northern Red Oak	<i>Quercus rubra</i>	ALIVE	34.0	5/26/2021
1078	Eastern Cottonwood	<i>Populus deltoides</i>	ALIVE	13.7	5/26/2021
1079	Red Maple	<i>Acer rubrum</i>	ALIVE	19.5	5/26/2021
1080	Shagbark Hickory	<i>Carya ovata</i>	ALIVE	18.0	5/26/2021
1081	Eastern Cottonwood	<i>Populus deltoides</i>	ALIVE	18.0	5/26/2021
1082	Sugar Maple	<i>Acer saccharum</i>	ALIVE	18.0	5/26/2021
1083	Black Birch	<i>Betula lenta</i>	ALIVE	11.2	5/26/2021
1084	Pig Nut Hickory	<i>Carya glabra</i>	DEAD	13.0	5/26/2021
1085	Black Birch	<i>Betula lenta</i>	ALIVE	8.4	5/26/2021
1086	Eastern Cottonwood	<i>Populus deltoides</i>	ALIVE	17.3	5/26/2021
1087	Eastern Cottonwood	<i>Populus deltoides</i>	ALIVE	16.0	5/26/2021
1088	Black Birch	<i>Betula lenta</i>	ALIVE	11.5	5/26/2021
1089	Sugar Maple	<i>Acer saccharum</i>	ALIVE	29.0	5/26/2021
1090	Black Birch	<i>Betula lenta</i>	ALIVE	8.6	5/26/2021
1091	Black Birch	<i>Betula lenta</i>	ALIVE	11.6	5/26/2021
1092	Red Maple	<i>Acer rubrum</i>	ALIVE	16.0	5/26/2021
1093	Red Maple	<i>Acer rubrum</i>	ALIVE	12.0	5/26/2021

Tree ID	Common Name	Scientific Name	Status	DBH (inches)	Date Surveyed
1094	White Oak	<i>Quercus alba</i>	ALIVE	13.0	5/26/2021
1095	Black Birch	<i>Betula lenta</i>	ALIVE	14.0	5/26/2021
1096	Sugar Maple	<i>Acer saccharum</i>	ALIVE	10.0	5/26/2021
1097	Black Birch	<i>Betula lenta</i>	ALIVE	14.5	5/26/2021
1098	Shagbark Hickory	<i>Carya ovata</i>	ALIVE	16.0	5/26/2021
1099	Sugar Maple	<i>Acer saccharum</i>	ALIVE	10.0	5/26/2021
1100	Shagbark Hickory	<i>Carya ovata</i>	ALIVE	11.0	5/26/2021
1101	Northern Red Oak	<i>Quercus rubra</i>	ALIVE	27.2	5/26/2021
1102	Shagbark Hickory	<i>Carya ovata</i>	ALIVE	9.0	5/26/2021
1103	Shagbark Hickory	<i>Carya ovata</i>	ALIVE	9.0	5/26/2021
1104	Sugar Maple	<i>Acer saccharum</i>	ALIVE	8.7	5/26/2021
1105	Sassafras	<i>Sassafras albidum</i>	DEAD	17.0	5/26/2021
1106	Shagbark Hickory	<i>Carya ovata</i>	ALIVE	19.5	5/26/2021
1107	Shagbark Hickory	<i>Carya ovata</i>	ALIVE	15.0	5/26/2021
1108	Pig Nut Hickory	<i>Carya glabra</i>	ALIVE	28.5	5/26/2021
1109	Sugar Maple	<i>Acer saccharum</i>	ALIVE	9.0	5/26/2021
1110	Sugar Maple	<i>Acer saccharum</i>	ALIVE	10.0	5/26/2021
1111	Sugar Maple	<i>Acer saccharum</i>	ALIVE	29.2	5/26/2021
1112	Sugar Maple	<i>Acer saccharum</i>	ALIVE	19.7	5/26/2021
1113	Sugar Maple	<i>Acer saccharum</i>	ALIVE	17.8	5/26/2021
1114	Shagbark Hickory	<i>Carya ovata</i>	ALIVE	19.7	5/26/2021
1115	Pig Nut Hickory	<i>Carya glabra</i>	DEAD	21.0	5/26/2021
1116	Sugar Maple	<i>Acer saccharum</i>	ALIVE	14.0	5/26/2021
1117	Sugar Maple	<i>Acer saccharum</i>	ALIVE	15.5	5/26/2021
1118	Sugar Maple	<i>Acer saccharum</i>	ALIVE	21.0	5/26/2021
1119	Northern Red Oak	<i>Quercus rubra</i>	ALIVE	20.0	5/26/2021
1120	Black Birch	<i>Betula lenta</i>	ALIVE	18.0	5/26/2021
1121	Pig Nut Hickory	<i>Carya glabra</i>	ALIVE	23.0	5/26/2021
1122	Northern Red Oak	<i>Quercus rubra</i>	ALIVE	34.7	5/26/2021
1123	Northern Red Oak	<i>Quercus rubra</i>	ALIVE	13.0	5/26/2021
1124	Pig Nut Hickory	<i>Carya glabra</i>	ALIVE	10.0	5/26/2021
1125	Sugar Maple	<i>Acer saccharum</i>	ALIVE	9.0	5/26/2021
1126	Northern Red Oak	<i>Quercus rubra</i>	ALIVE	25.0	5/26/2021
1127	Shagbark Hickory	<i>Carya ovata</i>	ALIVE	13.0	5/26/2021
1129	Sugar Maple	<i>Acer saccharum</i>	ALIVE	17.5	5/26/2021
1131	Pig Nut Hickory	<i>Carya glabra</i>	ALIVE	17.5	5/26/2021
1173	Shagbark Hickory	<i>Carya ovata</i>	ALIVE	12.0	5/26/2021
1174	Shagbark Hickory	<i>Carya ovata</i>	ALIVE	13.0	5/26/2021
1175	Northern Red Oak	<i>Quercus rubra</i>	ALIVE	11.8	5/26/2021
1176	White Oak	<i>Quercus alba</i>	ALIVE	22.4	5/26/2021
1177	Shagbark Hickory	<i>Carya ovata</i>	ALIVE	15.7	5/26/2021
1178	Black Birch	<i>Betula lenta</i>	ALIVE	11.0	5/26/2021
1179	Black Birch	<i>Betula lenta</i>	ALIVE	15.6	5/26/2021
1180	Black Birch	<i>Betula lenta</i>	ALIVE	10.3	5/26/2021
1181	Northern Red Oak	<i>Quercus rubra</i>	ALIVE	32.0	5/26/2021
1182	Sugar Maple	<i>Acer saccharum</i>	ALIVE	10.4	5/26/2021

Tree ID	Common Name	Scientific Name	Status	DBH (inches)	Date Surveyed
1183	Northern Red Oak	<i>Quercus rubra</i>	ALIVE	26.0	5/26/2021
1184	Shagbark Hickory	<i>Carya ovata</i>	ALIVE	12.5	5/26/2021
1185	Sugar Maple	<i>Acer saccharum</i>	ALIVE	18.5	5/26/2021
1186	Sugar Maple	<i>Acer saccharum</i>	ALIVE	18.4	5/26/2021
1187	Shagbark Hickory	<i>Carya ovata</i>	ALIVE	8.4	5/26/2021
1188	Shagbark Hickory	<i>Carya ovata</i>	ALIVE	15.7	5/26/2021
1189	Shagbark Hickory	<i>Carya ovata</i>	ALIVE	25.0	5/26/2021
1190	Black Birch	<i>Betula lenta</i>	ALIVE	11.3	5/26/2021
1191	Sugar Maple	<i>Acer saccharum</i>	ALIVE	27.5	5/26/2021
1192	Sugar Maple	<i>Acer saccharum</i>	ALIVE	20.4	5/26/2021
1193	Shagbark Hickory	<i>Carya ovata</i>	ALIVE	12.2	5/26/2021
1194	Northern Red Oak	<i>Quercus rubra</i>	ALIVE	20.2	5/26/2021
1195	Sugar Maple	<i>Acer saccharum</i>	ALIVE	22.0	5/26/2021
1196	Sugar Maple	<i>Acer saccharum</i>	ALIVE	8.5	5/26/2021
1198	White Oak	<i>Quercus alba</i>	ALIVE	14.0	5/26/2021
1212	Sugar Maple	<i>Acer saccharum</i>	ALIVE	21.5	5/26/2021
1213	Red Maple	<i>Acer rubrum</i>	ALIVE	16.7	5/26/2021
1214	Sugar Maple	<i>Acer saccharum</i>	ALIVE	8.0	5/26/2021
1215	Sugar Maple	<i>Acer saccharum</i>	ALIVE	23.0	5/26/2021
1216	Northern Red Oak	<i>Quercus rubra</i>	ALIVE	26.5	5/26/2021
1217	Sugar Maple	<i>Acer saccharum</i>	ALIVE	10.8	5/26/2021
1218	Northern Red Oak	<i>Quercus rubra</i>	ALIVE	19.4	5/26/2021
1219	White Oak	<i>Quercus alba</i>	ALIVE	9.2	5/26/2021
1220	Northern Red Oak	<i>Quercus rubra</i>	ALIVE	34.2	5/26/2021
1221	Sugar Maple	<i>Acer saccharum</i>	ALIVE	29.0	5/26/2021
1224	White Walnut	<i>Juglans cinerea</i>	ALIVE	19.6	5/26/2021
1225	Sugar Maple	<i>Acer saccharum</i>	ALIVE	31.0	5/26/2021
1230	Sugar Maple	<i>Acer saccharum</i>	ALIVE	12.8	5/26/2021
1231	Tulip Tree	<i>Liriodendron tulipifera</i>	ALIVE	28.4	5/26/2021
1234	Sugar Maple	<i>Acer saccharum</i>	ALIVE	13.5	5/26/2021
1235	Sugar Maple	<i>Acer saccharum</i>	ALIVE	10.7	5/26/2021
1236	Sugar Maple	<i>Acer saccharum</i>	ALIVE	17.5	5/26/2021
1237	Black Birch	<i>Betula lenta</i>	ALIVE	17.5	5/26/2021
1238	Tulip Tree	<i>Liriodendron tulipifera</i>	ALIVE	23.6	5/26/2021
1239	Sugar Maple	<i>Acer saccharum</i>	ALIVE	9.0	5/26/2021
1240	Sugar Maple	<i>Acer saccharum</i>	ALIVE	11.0	5/26/2021
1241	White Oak	<i>Quercus alba</i>	ALIVE	17.4	5/26/2021
1242	Black Birch	<i>Betula lenta</i>	ALIVE	13.1	5/26/2021
1243	Tulip Tree	<i>Liriodendron tulipifera</i>	ALIVE	27.9	5/26/2021
1244	Sugar Maple	<i>Acer saccharum</i>	ALIVE	9.1	5/26/2021
1245	Sugar Maple	<i>Acer saccharum</i>	ALIVE	9.5	5/26/2021
1246	Black Birch	<i>Betula lenta</i>	ALIVE	27.7	5/26/2021
1247	Black Birch	<i>Betula lenta</i>	ALIVE	19.2	5/26/2021
1248	Black Birch	<i>Betula lenta</i>	ALIVE	14.7	5/26/2021
1250	Tulip Tree	<i>Liriodendron tulipifera</i>	ALIVE	25.6	5/26/2021
1252	Tulip Tree	<i>Liriodendron tulipifera</i>	ALIVE	92.0	5/26/2021

Tree ID	Common Name	Scientific Name	Status	DBH (inches)	Date Surveyed
1253	Red Maple	<i>Acer rubrum</i>	ALIVE	33.7	5/26/2021
1254	White Walnut	<i>Juglans cinerea</i>	ALIVE	23.8	5/26/2021
1255	Sugar Maple	<i>Acer saccharum</i>	ALIVE	11.8	5/26/2021
1256	Sugar Maple	<i>Acer saccharum</i>	ALIVE	12.2	5/26/2021
1257	Sugar Maple	<i>Acer saccharum</i>	ALIVE	11.5	5/26/2021
1258	Sugar Maple	<i>Acer saccharum</i>	ALIVE	9.8	5/26/2021
1259	White Oak	<i>Quercus alba</i>	ALIVE	19.8	5/26/2021
1261	White Oak	<i>Quercus alba</i>	ALIVE	17.9	5/26/2021
1262	Sugar Maple	<i>Acer saccharum</i>	ALIVE	10.3	5/26/2021
1263	Sugar Maple	<i>Acer saccharum</i>	ALIVE	8.2	5/26/2021
1264	Sugar Maple	<i>Acer saccharum</i>	ALIVE	12.8	5/26/2021
1265	Sugar Maple	<i>Acer saccharum</i>	ALIVE	11.8	5/26/2021
1266	Sugar Maple	<i>Acer saccharum</i>	ALIVE	8.3	5/26/2021
1267	Sugar Maple	<i>Acer saccharum</i>	ALIVE	10.7	5/26/2021
1268	Sugar Maple	<i>Acer saccharum</i>	ALIVE	13.7	5/26/2021
1269	Sugar Maple	<i>Acer saccharum</i>	ALIVE	8.7	5/26/2021
1270	Sugar Maple	<i>Acer saccharum</i>	ALIVE	12.3	5/26/2021
1271	Tulip Tree	<i>Liriodendron tulipifera</i>	ALIVE	24.3	5/26/2021
1272	White Oak	<i>Quercus alba</i>	ALIVE	19.0	5/26/2021
1273	Tulip Tree	<i>Liriodendron tulipifera</i>	ALIVE	15.0	5/26/2021
1276	Sugar Maple	<i>Acer saccharum</i>	ALIVE	9.7	5/26/2021
1277	Sugar Maple	<i>Acer saccharum</i>	ALIVE	9.4	5/26/2021
1278	Sugar Maple	<i>Acer saccharum</i>	ALIVE	15.2	5/26/2021
1279	Sugar Maple	<i>Acer saccharum</i>	ALIVE	9.5	5/26/2021
1280	Red Maple	<i>Acer rubrum</i>	ALIVE	42.7	5/26/2021
1281	Sugar Maple	<i>Acer saccharum</i>	ALIVE	17.5	5/26/2021
1282	Sugar Maple	<i>Acer saccharum</i>	ALIVE	9.3	5/26/2021
1283	Sugar Maple	<i>Acer saccharum</i>	ALIVE	8.9	5/26/2021
1284	Tulip Tree	<i>Liriodendron tulipifera</i>	ALIVE	30.4	5/26/2021
1285	Sugar Maple	<i>Acer saccharum</i>	ALIVE	12.8	5/26/2021
1286	Tulip Tree	<i>Liriodendron tulipifera</i>	ALIVE	25.0	5/26/2021
1287	Black Birch	<i>Betula lenta</i>	ALIVE	16.7	5/26/2021
1288	Sugar Maple	<i>Acer saccharum</i>	ALIVE	16.0	5/26/2021
1289	Northern Red Oak	<i>Quercus rubra</i>	ALIVE	16.1	5/26/2021
1290	Black Cherry	<i>Prunus serotina</i>	DEAD	9.4	5/26/2021
1291	Sugar Maple	<i>Acer saccharum</i>	ALIVE	13.7	5/26/2021
1292	Sugar Maple	<i>Acer saccharum</i>	ALIVE	20.5	5/26/2021
1293	Sugar Maple	<i>Acer saccharum</i>	ALIVE	13.4	5/26/2021
1294	Sugar Maple	<i>Acer saccharum</i>	ALIVE	12.0	5/26/2021
1296	Red Maple	<i>Acer rubrum</i>	ALIVE	11.0	5/26/2021
1297	Sugar Maple	<i>Acer saccharum</i>	ALIVE	11.8	5/26/2021
1298	Sugar Maple	<i>Acer saccharum</i>	ALIVE	9.2	5/26/2021
1299	Sugar Maple	<i>Acer saccharum</i>	ALIVE	10.5	5/26/2021
1300	Sugar Maple	<i>Acer saccharum</i>	ALIVE	11.4	5/26/2021
1301	Sugar Maple	<i>Acer saccharum</i>	ALIVE	9.5	5/26/2021
1302	Sugar Maple	<i>Acer saccharum</i>	ALIVE	8.5	5/26/2021

Tree ID	Common Name	Scientific Name	Status	DBH (inches)	Date Surveyed
1303	Sugar Maple	<i>Acer saccharum</i>	ALIVE	17.5	5/26/2021
1304	Red Maple	<i>Acer rubrum</i>	ALIVE	17.4	5/26/2021
1305	Red Maple	<i>Acer rubrum</i>	ALIVE	9.0	5/26/2021
1306	Northern Red Oak	<i>Quercus rubra</i>	ALIVE	22.3	5/26/2021
1307	Black Cherry	<i>Prunus serotina</i>	ALIVE	15.2	5/26/2021
1308	Sugar Maple	<i>Acer saccharum</i>	ALIVE	13.9	5/26/2021
1309	Sugar Maple	<i>Acer saccharum</i>	ALIVE	16.5	5/26/2021
1310	Red Maple	<i>Acer rubrum</i>	ALIVE	8.6	5/26/2021
1311	Red Maple	<i>Acer rubrum</i>	ALIVE	9.1	5/26/2021
1312	Sugar Maple	<i>Acer saccharum</i>	DEAD	13.8	5/26/2021
1313	Red Maple	<i>Acer rubrum</i>	ALIVE	9.0	5/26/2021
1314	Red Maple	<i>Acer rubrum</i>	ALIVE	14.7	5/26/2021
1315	Northern Red Oak	<i>Quercus rubra</i>	ALIVE	14.4	5/26/2021
1316	Sugar Maple	<i>Acer saccharum</i>	ALIVE	15.6	6/10/2021
1317	White Oak	<i>Quercus alba</i>	ALIVE	17.6	6/10/2021
1318	White Oak	<i>Quercus alba</i>	ALIVE	18.1	6/10/2021
1319	Northern Red Oak	<i>Quercus rubra</i>	ALIVE	26.2	6/10/2021
1320	Sugar Maple	<i>Acer saccharum</i>	ALIVE	16.5	6/10/2021
1321	Northern Red Oak	<i>Quercus rubra</i>	ALIVE	21.2	6/10/2021
1322	Black Birch	<i>Betula lenta</i>	ALIVE	21.5	6/10/2021
1323	White Oak	<i>Quercus alba</i>	ALIVE	18.8	6/10/2021
1324	Sugar Maple	<i>Acer saccharum</i>	ALIVE	8.8	6/10/2021
1325	Northern Red Oak	<i>Quercus rubra</i>	ALIVE	26.9	6/10/2021
1326	Northern Red Oak	<i>Quercus rubra</i>	ALIVE	19.8	6/10/2021
1327	Sugar Maple	<i>Acer saccharum</i>	ALIVE	10.3	6/10/2021
1328	Sugar Maple	<i>Acer saccharum</i>	ALIVE	9.7	6/10/2021
1329	Red Maple	<i>Acer rubrum</i>	ALIVE	12.5	6/10/2021
1330	White Oak	<i>Quercus alba</i>	ALIVE	9.7	6/10/2021
1331	Sugar Maple	<i>Acer saccharum</i>	ALIVE	17.8	6/10/2021
1332	Red Maple	<i>Acer rubrum</i>	ALIVE	13.8	6/10/2021
1333	Shagbark Hickory	<i>Carya ovata</i>	ALIVE	13.1	6/10/2021
1334	Shagbark Hickory	<i>Carya ovata</i>	ALIVE	10.5	6/10/2021
1335	Sugar Maple	<i>Acer saccharum</i>	ALIVE	13.2	6/10/2021
1336	Sugar Maple	<i>Acer saccharum</i>	ALIVE	12.1	6/10/2021
1337	Northern Red Oak	<i>Quercus rubra</i>	ALIVE	23.5	6/10/2021
1338	Northern Red Oak	<i>Quercus rubra</i>	ALIVE	28.1	6/10/2021
1339	Sugar Maple	<i>Acer saccharum</i>	ALIVE	9.9	6/10/2021
1340	Northern Red Oak	<i>Quercus rubra</i>	ALIVE	22.2	6/10/2021
1341	Pig Nut Hickory	<i>Carya glabra</i>	ALIVE	19.2	6/10/2021
1342	Sugar Maple	<i>Acer saccharum</i>	ALIVE	12.9	6/10/2021
1343	Northern Red Oak	<i>Quercus rubra</i>	ALIVE	22.5	6/10/2021
1344	White Oak	<i>Quercus alba</i>	ALIVE	22.5	6/10/2021
1345	Shagbark Hickory	<i>Carya ovata</i>	ALIVE	16.2	6/10/2021
1346	Shagbark Hickory	<i>Carya ovata</i>	ALIVE	16.3	6/10/2021
1347	Sugar Maple	<i>Acer saccharum</i>	ALIVE	12.1	6/10/2021
1348	Northern Red Oak	<i>Quercus rubra</i>	ALIVE	24.6	6/10/2021

Tree ID	Common Name	Scientific Name	Status	DBH (inches)	Date Surveyed
1349	Sugar Maple	<i>Acer saccharum</i>	ALIVE	17.8	6/10/2021
1350	Shagbark Hickory	<i>Carya ovata</i>	DEAD	16.0	6/10/2021
1351	Pig Nut Hickory	<i>Carya glabra</i>	ALIVE	16.8	6/10/2021
1352	Black Cherry	<i>Prunus serotina</i>	ALIVE	10.8	6/10/2021
1353	Sugar Maple	<i>Acer saccharum</i>	ALIVE	12.3	6/10/2021
1354	Sugar Maple	<i>Acer saccharum</i>	ALIVE	12.3	6/10/2021
1355	Sugar Maple	<i>Acer saccharum</i>	ALIVE	13.4	6/10/2021
1356	Sugar Maple	<i>Acer saccharum</i>	ALIVE	13.6	6/10/2021
1357	Red Maple	<i>Acer rubrum</i>	ALIVE	12.1	6/10/2021
1358	Shagbark Hickory	<i>Carya ovata</i>	ALIVE	10.7	6/10/2021
1359	Shagbark Hickory	<i>Carya ovata</i>	ALIVE	10.0	6/10/2021
1360	Shagbark Hickory	<i>Carya ovata</i>	ALIVE	8.6	6/10/2021
1361	Northern Red Oak	<i>Quercus rubra</i>	ALIVE	20.1	6/10/2021
1362	Sugar Maple	<i>Acer saccharum</i>	ALIVE	11.4	6/10/2021
1363	Sugar Maple	<i>Acer saccharum</i>	ALIVE	17.2	6/10/2021
1364	Sassafras	<i>Sassafras albidum</i>	ALIVE	20.0	6/10/2021
1365	Northern Red Oak	<i>Quercus rubra</i>	ALIVE	19.7	6/10/2021
1366	Northern Red Oak	<i>Quercus rubra</i>	ALIVE	23.1	6/10/2021
1367	Northern Red Oak	<i>Quercus rubra</i>	ALIVE	30.2	6/10/2021
1368	Northern Red Oak	<i>Quercus rubra</i>	ALIVE	22.4	6/10/2021
1369	Northern Red Oak	<i>Quercus rubra</i>	ALIVE	23.2	6/10/2021
1370	Northern Red Oak	<i>Quercus rubra</i>	ALIVE	16.0	6/10/2021
1371	Northern Red Oak	<i>Quercus rubra</i>	ALIVE	16.8	6/10/2021
1372	Northern Red Oak	<i>Quercus rubra</i>	ALIVE	19.4	6/10/2021
1373	Northern Red Oak	<i>Quercus rubra</i>	ALIVE	19.1	6/10/2021
1374	Northern Red Oak	<i>Quercus rubra</i>	ALIVE	17.2	6/10/2021
1375	Sugar Maple	<i>Acer saccharum</i>	ALIVE	8.5	6/10/2021
1376	Northern Red Oak	<i>Quercus rubra</i>	ALIVE	40.5	6/10/2021
1377	Sugar Maple	<i>Acer saccharum</i>	ALIVE	9.6	6/10/2021
1378	Sugar Maple	<i>Acer saccharum</i>	ALIVE	10.6	6/10/2021
1379	Unknown	Unknown	DEAD	13.3	6/10/2021
1380	Northern Red Oak	<i>Quercus rubra</i>	ALIVE	27.3	6/10/2021
1381	Northern Red Oak	<i>Quercus rubra</i>	ALIVE	12.5	6/10/2021
1382	White Oak	<i>Quercus alba</i>	ALIVE	19.9	6/10/2021
1383	Northern Red Oak	<i>Quercus rubra</i>	ALIVE	22.5	6/10/2021
1384	Pig Nut Hickory	<i>Carya glabra</i>	ALIVE	13.4	6/10/2021
1397	Sugar Maple	<i>Acer saccharum</i>	ALIVE	9.1	6/10/2021
1398	Sugar Maple	<i>Acer saccharum</i>	ALIVE	15.5	6/10/2021
1399	Northern Red Oak	<i>Quercus rubra</i>	ALIVE	16.5	6/10/2021
1400	Northern Red Oak	<i>Quercus rubra</i>	ALIVE	9.7	6/10/2021
1401	Sugar Maple	<i>Acer saccharum</i>	ALIVE	15.5	6/10/2021
1402	Sugar Maple	<i>Acer saccharum</i>	ALIVE	10.6	6/10/2021
1403	Sugar Maple	<i>Acer saccharum</i>	ALIVE	9.2	6/10/2021
1404	Northern Red Oak	<i>Quercus rubra</i>	ALIVE	17.3	6/10/2021
1405	Sugar Maple	<i>Acer saccharum</i>	ALIVE	8.0	6/10/2021
1406	Northern Red Oak	<i>Quercus rubra</i>	ALIVE	35.5	6/10/2021

Tree ID	Common Name	Scientific Name	Status	DBH (inches)	Date Surveyed
1407	Sugar Maple	<i>Acer saccharum</i>	ALIVE	17.7	6/10/2021
1408	Sugar Maple	<i>Acer saccharum</i>	ALIVE	10.4	6/10/2021
1409	Northern Red Oak	<i>Quercus rubra</i>	ALIVE	29.2	6/10/2021
1410	Northern Red Oak	<i>Quercus rubra</i>	ALIVE	19.1	6/10/2021
1411	Northern Red Oak	<i>Quercus rubra</i>	ALIVE	20.2	6/10/2021
1412	Northern Red Oak	<i>Quercus rubra</i>	ALIVE	18.2	6/10/2021
1413	Northern Red Oak	<i>Quercus rubra</i>	ALIVE	33.0	6/10/2021
1414	Northern Red Oak	<i>Quercus rubra</i>	ALIVE	21.3	6/10/2021
1415	Northern Red Oak	<i>Quercus rubra</i>	ALIVE	29.0	6/10/2021
1416	Northern Red Oak	<i>Quercus rubra</i>	ALIVE	17.9	6/10/2021
1417	Northern Red Oak	<i>Quercus rubra</i>	ALIVE	18.7	6/10/2021
1418	Northern Red Oak	<i>Quercus rubra</i>	ALIVE	21.1	6/10/2021
1419	Northern Red Oak	<i>Quercus rubra</i>	ALIVE	14.2	6/10/2021
1420	Northern Red Oak	<i>Quercus rubra</i>	ALIVE	14.7	6/10/2021
1421	Northern Red Oak	<i>Quercus rubra</i>	ALIVE	13.2	6/10/2021
1422	Northern Red Oak	<i>Quercus rubra</i>	ALIVE	16.6	6/10/2021
1423	Northern Red Oak	<i>Quercus rubra</i>	ALIVE	14.1	6/10/2021
1424	Northern Red Oak	<i>Quercus rubra</i>	ALIVE	21.2	6/10/2021
1425	Northern Red Oak	<i>Quercus rubra</i>	ALIVE	15.3	6/10/2021
1426	Northern Red Oak	<i>Quercus rubra</i>	ALIVE	13.4	6/10/2021
1427	Northern Red Oak	<i>Quercus rubra</i>	ALIVE	11.2	6/10/2021
1428	Northern Red Oak	<i>Quercus rubra</i>	ALIVE	13.4	6/10/2021
1429	Sugar Maple	<i>Acer saccharum</i>	ALIVE	10.4	6/10/2021
1431	Northern Red Oak	<i>Quercus rubra</i>	ALIVE	27.9	6/10/2021
1432	White Oak	<i>Quercus alba</i>	ALIVE	16.0	6/10/2021
1433	Northern Red Oak	<i>Quercus rubra</i>	ALIVE	18.5	6/10/2021
1437	Sugar Maple	<i>Acer saccharum</i>	ALIVE	14.2	6/10/2021
1439	Northern Red Oak	<i>Quercus rubra</i>	ALIVE	12.6	6/10/2021
1440	Sugar Maple	<i>Acer saccharum</i>	ALIVE	9.0	6/10/2021
1444	Northern Red Oak	<i>Quercus rubra</i>	ALIVE	20.1	6/10/2021
1445	White Oak	<i>Quercus alba</i>	ALIVE	22.2	6/10/2021
1448	Sugar Maple	<i>Acer saccharum</i>	ALIVE	21.3	6/10/2021
1449	Black Birch	<i>Betula lenta</i>	ALIVE	24.5	6/10/2021
1450	Sugar Maple	<i>Acer saccharum</i>	ALIVE	10.0	6/10/2021
1451	White Oak	<i>Quercus alba</i>	ALIVE	35.2	6/10/2021
1452	Sugar Maple	<i>Acer saccharum</i>	ALIVE	9.0	6/10/2021
1454	Red Maple	<i>Acer rubrum</i>	ALIVE	15.0	6/11/2021
1455	Sugar Maple	<i>Acer saccharum</i>	ALIVE	10.7	6/11/2021
1456	Sugar Maple	<i>Acer saccharum</i>	ALIVE	17.0	6/11/2021
1459	Northern Red Oak	<i>Quercus rubra</i>	ALIVE	25.6	6/11/2021
1460	Sugar Maple	<i>Acer saccharum</i>	ALIVE	13.7	6/11/2021
1461	Sugar Maple	<i>Acer saccharum</i>	ALIVE	10.0	6/11/2021
1462	Northern Red Oak	<i>Quercus rubra</i>	ALIVE	32.8	6/11/2021
1463	American Hophornbeam	<i>Ostrya virginiana</i>	ALIVE	19.0	6/11/2021
1464	Unknown	Unknown	DEAD	10.4	6/11/2021
1465	Sugar Maple	<i>Acer saccharum</i>	ALIVE	11.5	6/11/2021

Tree ID	Common Name	Scientific Name	Status	DBH (inches)	Date Surveyed
1467	Black Birch	<i>Betula lenta</i>	ALIVE	19.6	6/11/2021
1468	Black Birch	<i>Betula lenta</i>	ALIVE	22.4	6/11/2021
1469	Sugar Maple	<i>Acer saccharum</i>	ALIVE	8.9	6/11/2021
1470	Sugar Maple	<i>Acer saccharum</i>	ALIVE	8.9	6/11/2021
1471	Sugar Maple	<i>Acer saccharum</i>	ALIVE	8.0	6/11/2021
1472	Sugar Maple	<i>Acer saccharum</i>	ALIVE	8.0	6/11/2021
1473	Shagbark Hickory	<i>Carya ovata</i>	ALIVE	12.8	6/11/2021
1474	Northern Red Oak	<i>Quercus rubra</i>	ALIVE	25.4	6/11/2021
1475	Red Maple	<i>Acer rubrum</i>	ALIVE	17.9	6/11/2021
1476	Sugar Maple	<i>Acer saccharum</i>	ALIVE	11.0	6/11/2021
1477	Sugar Maple	<i>Acer saccharum</i>	ALIVE	9.7	6/11/2021
1478	Northern Red Oak	<i>Quercus rubra</i>	DEAD	22.0	6/11/2021
1479	Sugar Maple	<i>Acer saccharum</i>	ALIVE	13.0	6/11/2021
1480	Sugar Maple	<i>Acer saccharum</i>	ALIVE	14.2	6/11/2021
1481	Sugar Maple	<i>Acer saccharum</i>	ALIVE	11.5	6/11/2021
1482	Sugar Maple	<i>Acer saccharum</i>	ALIVE	13.4	6/11/2021
1483	Northern Red Oak	<i>Quercus rubra</i>	ALIVE	17.0	6/11/2021
1484	Sugar Maple	<i>Acer saccharum</i>	ALIVE	8.0	6/11/2021
1485	Sugar Maple	<i>Acer saccharum</i>	ALIVE	16.5	6/11/2021
1486	Northern Red Oak	<i>Quercus rubra</i>	ALIVE	20.3	6/11/2021
1487	Sugar Maple	<i>Acer saccharum</i>	ALIVE	17.0	6/11/2021
1488	Northern Red Oak	<i>Quercus rubra</i>	ALIVE	17.7	6/11/2021
1489	Sugar Maple	<i>Acer saccharum</i>	ALIVE	9.2	6/11/2021
1490	Northern Red Oak	<i>Quercus rubra</i>	ALIVE	17.0	6/11/2021
1491	Northern Red Oak	<i>Quercus rubra</i>	ALIVE	21.4	6/11/2021
1492	Black Birch	<i>Betula lenta</i>	ALIVE	14.8	6/11/2021
1493	Northern Red Oak	<i>Quercus rubra</i>	ALIVE	13.2	6/11/2021
1494	Red Maple	<i>Acer rubrum</i>	ALIVE	18.5	6/11/2021
1495	Black Birch	<i>Betula lenta</i>	ALIVE	14.7	6/11/2021
1496	Pig Nut Hickory	<i>Carya glabra</i>	ALIVE	11.8	6/11/2021
1497	Northern Red Oak	<i>Quercus rubra</i>	ALIVE	22.5	6/11/2021
1498	Northern Red Oak	<i>Quercus rubra</i>	ALIVE	34.7	6/11/2021
1499	Black Birch	<i>Betula lenta</i>	ALIVE	9.4	6/11/2021
1500	Sugar Maple	<i>Acer saccharum</i>	ALIVE	12.0	6/11/2021
1501	Sugar Maple	<i>Acer saccharum</i>	ALIVE	9.6	6/11/2021
1502	Shagbark Hickory	<i>Carya ovata</i>	ALIVE	12.7	6/11/2021
1503	Sugar Maple	<i>Acer saccharum</i>	ALIVE	11.1	6/11/2021
1504	Black Birch	<i>Betula lenta</i>	ALIVE	25.2	6/11/2021
1505	Northern Red Oak	<i>Quercus rubra</i>	ALIVE	26.2	6/11/2021
1506	Black Birch	<i>Betula lenta</i>	DEAD	11.4	6/11/2021
1507	Shagbark Hickory	<i>Carya ovata</i>	ALIVE	12.8	6/11/2021
1508	Black Birch	<i>Betula lenta</i>	ALIVE	20.2	6/11/2021
1509	Sugar Maple	<i>Acer saccharum</i>	ALIVE	10.6	6/11/2021
1510	Northern Red Oak	<i>Quercus rubra</i>	ALIVE	27.5	6/11/2021
1511	Northern Red Oak	<i>Quercus rubra</i>	ALIVE	17.1	6/11/2021
1512	Northern Red Oak	<i>Quercus rubra</i>	ALIVE	10.6	6/11/2021

Tree ID	Common Name	Scientific Name	Status	DBH (inches)	Date Surveyed
1513	Black Birch	<i>Betula lenta</i>	ALIVE	18.7	6/11/2021
1514	Red Maple	<i>Acer rubrum</i>	ALIVE	8.4	6/11/2021
1515	Red Maple	<i>Acer rubrum</i>	ALIVE	14.9	6/11/2021
1516	Red Maple	<i>Acer rubrum</i>	ALIVE	9.1	6/11/2021
1517	Red Maple	<i>Acer rubrum</i>	ALIVE	11.3	6/11/2021
1518	Northern Red Oak	<i>Quercus rubra</i>	ALIVE	14.5	6/11/2021
1519	Red Maple	<i>Acer rubrum</i>	ALIVE	8.5	6/11/2021
1520	Sugar Maple	<i>Acer saccharum</i>	ALIVE	8.0	6/11/2021
1521	Red Maple	<i>Acer rubrum</i>	ALIVE	8.2	6/11/2021
1522	Sugar Maple	<i>Acer saccharum</i>	ALIVE	15.0	6/11/2021
1523	Northern Red Oak	<i>Quercus rubra</i>	ALIVE	14.9	6/11/2021
1524	Northern Red Oak	<i>Quercus rubra</i>	ALIVE	30.2	6/11/2021
1525	Northern Red Oak	<i>Quercus rubra</i>	ALIVE	11.7	6/11/2021
1526	Red Maple	<i>Acer rubrum</i>	ALIVE	12.4	6/11/2021
1527	Sugar Maple	<i>Acer saccharum</i>	ALIVE	14.2	6/11/2021
1528	Sugar Maple	<i>Acer saccharum</i>	ALIVE	10.7	6/11/2021
1529	Sugar Maple	<i>Acer saccharum</i>	ALIVE	10.4	6/11/2021
1530	Northern Red Oak	<i>Quercus rubra</i>	ALIVE	18.1	6/11/2021
1531	Sugar Maple	<i>Acer saccharum</i>	ALIVE	10.4	6/11/2021
1532	Pig Nut Hickory	<i>Carya glabra</i>	ALIVE	11.6	6/11/2021
1533	Sugar Maple	<i>Acer saccharum</i>	ALIVE	14.8	6/11/2021
1534	Northern Red Oak	<i>Quercus rubra</i>	DEAD	24.0	6/11/2021
1535	Shagbark Hickory	<i>Carya ovata</i>	ALIVE	15.4	6/11/2021
1536	Black Birch	<i>Betula lenta</i>	ALIVE	24.1	6/11/2021
1537	Sugar Maple	<i>Acer saccharum</i>	ALIVE	8.7	6/11/2021
1538	Sugar Maple	<i>Acer saccharum</i>	ALIVE	15.2	6/11/2021
1539	Sugar Maple	<i>Acer saccharum</i>	ALIVE	20.1	6/11/2021
1540	Sugar Maple	<i>Acer saccharum</i>	ALIVE	8.3	6/11/2021
1541	Sugar Maple	<i>Acer saccharum</i>	ALIVE	10.2	6/11/2021
1542	Black Birch	<i>Betula lenta</i>	ALIVE	20.0	6/11/2021
1543	White Oak	<i>Quercus alba</i>	ALIVE	19.9	6/11/2021
1544	Sugar Maple	<i>Acer saccharum</i>	ALIVE	9.3	6/11/2021
1545	Sugar Maple	<i>Acer saccharum</i>	ALIVE	14.0	6/11/2021
1546	Sugar Maple	<i>Acer saccharum</i>	ALIVE	9.2	6/11/2021
1547	Northern Red Oak	<i>Quercus rubra</i>	ALIVE	20.6	6/11/2021
1548	Sugar Maple	<i>Acer saccharum</i>	ALIVE	10.6	6/11/2021
1549	Sugar Maple	<i>Acer saccharum</i>	ALIVE	15.9	6/11/2021
1550	Sugar Maple	<i>Acer saccharum</i>	ALIVE	8.5	6/11/2021
1551	Sugar Maple	<i>Acer saccharum</i>	ALIVE	10.2	6/11/2021
1553	Sugar Maple	<i>Acer saccharum</i>	ALIVE	13.1	6/11/2021
1554	Sugar Maple	<i>Acer saccharum</i>	ALIVE	12.4	6/11/2021
1555	Red Maple	<i>Acer rubrum</i>	ALIVE	12.5	6/11/2021
1556	Red Maple	<i>Acer rubrum</i>	ALIVE	8.3	6/11/2021
1557	Sugar Maple	<i>Acer saccharum</i>	ALIVE	13.9	6/11/2021
1558	Red Maple	<i>Acer rubrum</i>	ALIVE	11.6	6/11/2021
1559	Red Maple	<i>Acer rubrum</i>	ALIVE	18.5	6/11/2021

Tree ID	Common Name	Scientific Name	Status	DBH (inches)	Date Surveyed
1560	Sugar Maple	<i>Acer saccharum</i>	ALIVE	16.0	6/11/2021
1561	Common Serviceberry	<i>Amelanchier arborea</i>	ALIVE	12.3	6/11/2021
1562	Black Birch	<i>Betula lenta</i>	ALIVE	17.2	6/11/2021
1563	Black Birch	<i>Betula lenta</i>	DEAD	22.2	6/11/2021
1564	Sugar Maple	<i>Acer saccharum</i>	ALIVE	8.6	6/11/2021
1565	Red Maple	<i>Acer rubrum</i>	ALIVE	21.9	6/11/2021
1566	Sugar Maple	<i>Acer saccharum</i>	ALIVE	10.4	6/11/2021
1567	Sugar Maple	<i>Acer saccharum</i>	ALIVE	12.8	6/11/2021
1568	Sugar Maple	<i>Acer saccharum</i>	DEAD	16.5	6/11/2021
1569	Sugar Maple	<i>Acer saccharum</i>	ALIVE	11.0	6/11/2021
1570	Red Maple	<i>Acer rubrum</i>	ALIVE	33.3	6/11/2021
1571	White Oak	<i>Quercus alba</i>	ALIVE	38.8	5/26/2021
1572	Pig Nut Hickory	<i>Carya glabra</i>	ALIVE	14.0	6/17/2021
1594	Black Birch	<i>Betula lenta</i>	ALIVE	21.0	6/17/2021
1601	Shagbark Hickory	<i>Carya ovata</i>	ALIVE	20.1	6/17/2021
1603	Sugar Maple	<i>Acer saccharum</i>	ALIVE	23.4	6/17/2021
1631	Northern Red Oak	<i>Quercus rubra</i>	ALIVE	20.0	6/17/2021
1632	Northern Red Oak	<i>Quercus rubra</i>	ALIVE	16.0	6/17/2021
1634	Northern Red Oak	<i>Quercus rubra</i>	ALIVE	15.0	6/17/2021
1636	Northern Red Oak	<i>Quercus rubra</i>	ALIVE	14.0	6/17/2021
1637	Northern Red Oak	<i>Quercus rubra</i>	ALIVE	13.7	6/17/2021
1639	Northern Red Oak	<i>Quercus rubra</i>	ALIVE	8.8	6/17/2021
1641	Northern Red Oak	<i>Quercus rubra</i>	ALIVE	16.5	6/17/2021
1644	Northern Red Oak	<i>Quercus rubra</i>	ALIVE	25.0	6/17/2021
1645	Northern Red Oak	<i>Quercus rubra</i>	ALIVE	16.3	6/17/2021
1650	Northern Red Oak	<i>Quercus rubra</i>	ALIVE	28.6	6/17/2021
1651	Northern Red Oak	<i>Quercus rubra</i>	ALIVE	8.6	6/17/2021
1652	Northern Red Oak	<i>Quercus rubra</i>	ALIVE	14.4	6/17/2021
1653	Northern Red Oak	<i>Quercus rubra</i>	ALIVE	21.7	6/17/2021
1654	Northern Red Oak	<i>Quercus rubra</i>	ALIVE	11.3	6/17/2021
1658	Northern Red Oak	<i>Quercus rubra</i>	ALIVE	24.4	6/17/2021
1660	Northern Red Oak	<i>Quercus rubra</i>	ALIVE	24.5	6/17/2021
1665	Northern Red Oak	<i>Quercus rubra</i>	ALIVE	24.6	6/17/2021
1808	Sugar Maple	<i>Acer saccharum</i>	ALIVE	9.1	6/17/2021
1818	Northern Red Oak	<i>Quercus rubra</i>	ALIVE	25.0	6/17/2021
1838	Shagbark Hickory	<i>Carya ovata</i>	ALIVE	21.2	6/17/2021
1853	Shagbark Hickory	<i>Carya ovata</i>	ALIVE	14.0	6/17/2021
1855	Northern Red Oak	<i>Quercus rubra</i>	ALIVE	13.4	6/17/2021
1858	Shagbark Hickory	<i>Carya ovata</i>	ALIVE	25.4	6/17/2021
1870	Shagbark Hickory	<i>Carya ovata</i>	ALIVE	25.0	6/17/2021
1873	Sugar Maple	<i>Acer saccharum</i>	ALIVE	9.0	6/17/2021
1878	Sugar Maple	<i>Acer saccharum</i>	ALIVE	21.6	6/17/2021
1882	Sugar Maple	<i>Acer saccharum</i>	ALIVE	16.8	5/25/2021