

MEMORANDUM

TO: Robyn A. Steinberg, AICP, CPESC
Town of Yorktown, New York

FROM: Daniel P. Biggs, RLA, ISA, CERP

DATE: August 31, 2022

SUBJECT: **Dell Avenue Solar – Wetland Verification**
Town of Yorktown, New York

As requested, Daniel Biggs of Weston & Sampson PE, LS, LA, ARCHITECTS, PC (Weston & Sampson) completed a review of the wetland boundary delineated by Matthew Regan of TRC Companies. A field visit with Matthew Regan and Colin Duncan (TRC Companies) was conducted on August 24th, 2022, to inspect the wetland boundary flagging. Wetland flagging was in place and easily visible. Wetland flag numbers 130 through 180, and ephemeral stream flags 1 through 8 were accounted for in the site review and illustrated on the Delineated Resources Map (Figure 4) dated August 2022.

As a result, the wetland delineation in the field and on the above referenced maps accurately depicts the limits of the wetlands on the site.

Please do not hesitate to reach out with any comments or questions regarding our findings and summary of work for this project.

Certification

I certify that all the statements of fact in this appraisal are true, complete, and correct to the best of my knowledge and belief, and that they are made in good faith.



Daniel P. Biggs, RLA, ISA (MA-5119A), CERP
Registered Landscape Architect NY-002443-01

8/31/2022

Date

exp. 1/31/2023

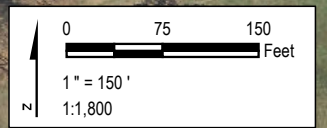
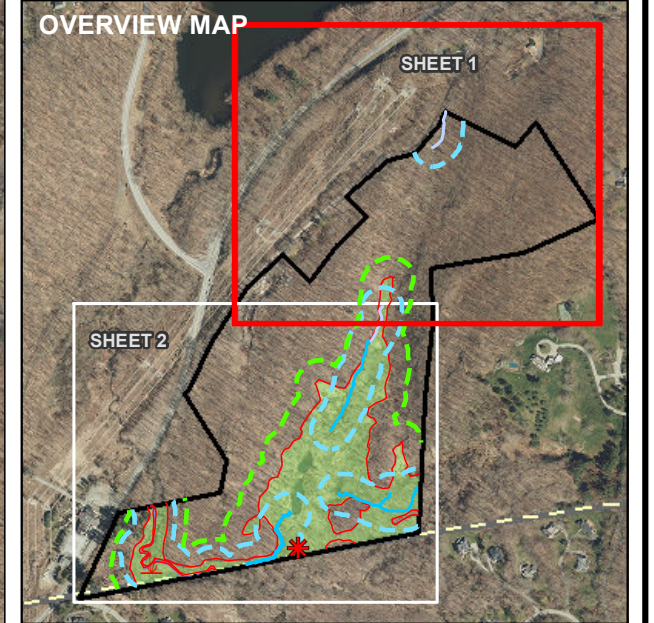
Attachments:

Delineated Resources Map (Figure 4) dated August 2022.

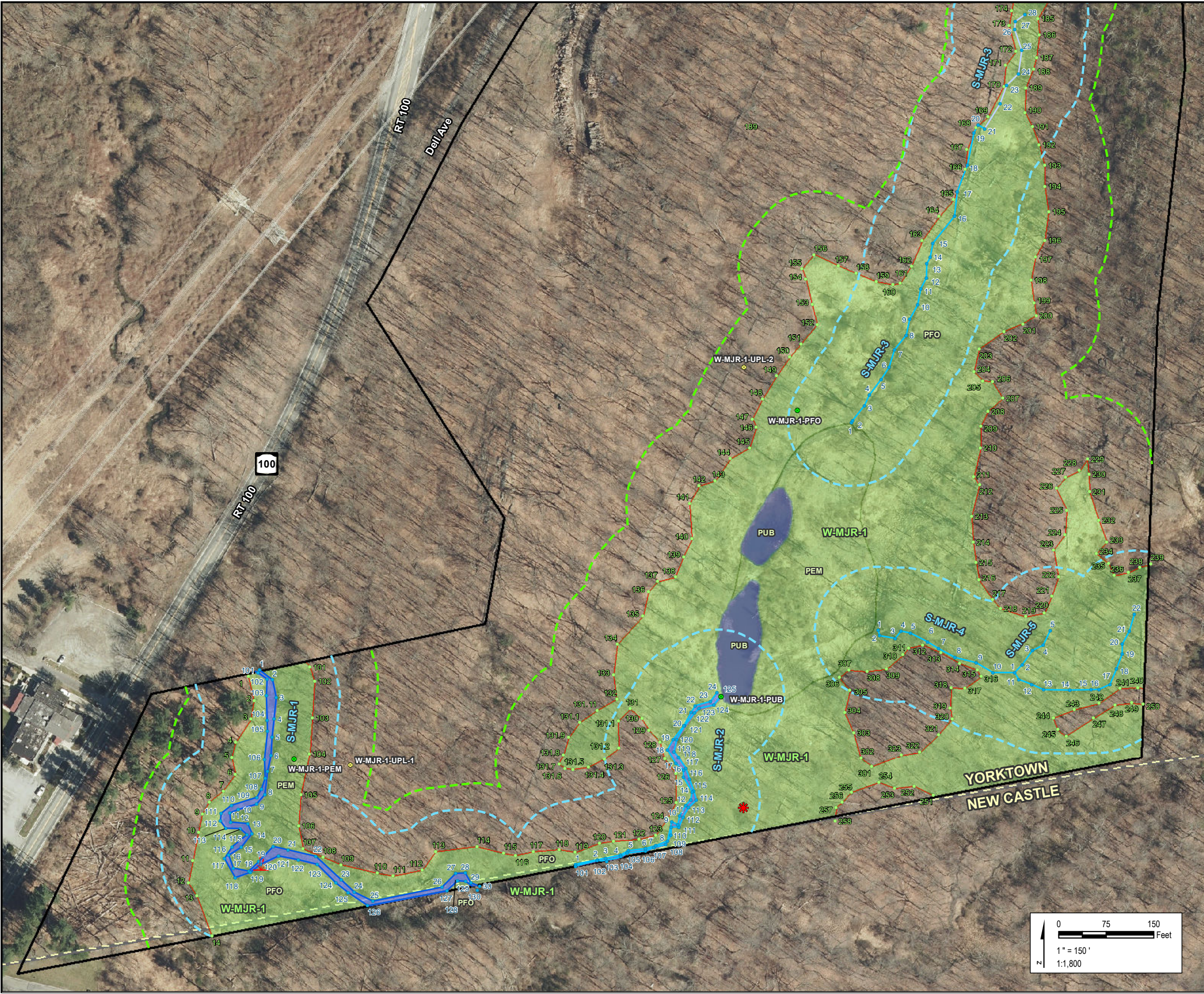
Plot Date: 8/31/2022 10:43:01 AM by SMOTURI -- LAYOUT: ANSIB(11"x17")
 Path: S:\1-PROJECTS\SOL_Systems\431302_DellAve_NY6-MXD\WDR_2021\Fig4_WDR_DellAve_Delineation_11x17_20220831.mxd Map Rotation: 0
 Coordinate System: NAD 1983 2011 StatePlane New York East FIPS 3101 Ft US (Foot US)
 TRC - GIS



- LEGEND**
- SITE BOUNDARY
 - INVASIVE PLANT
 - POSSIBLE VERNAL POOL
 - USACE WETLAND PLOT
 - USACE UPLAND PLOT
 - STREAM FLAG
 - WETLAND FLAG
 - DELINEATED EPHEMERAL STREAM
 - DELINEATED INTERMITTENT STREAM
 - DELINEATED PERENNIAL STREAM
 - DELINEATED SURFACE WATER
 - DELINEATED WETLAND BOUNDARY LINE
 - DELINEATED WETLAND
 - 100-FT WETLAND ADJACENT AREA (NYSDEC AND YORKTOWN)
 - 100-FT STREAM BUFFER (YORKTOWN)
 - MUNICIPAL BOUNDARY

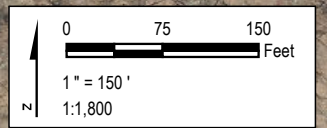
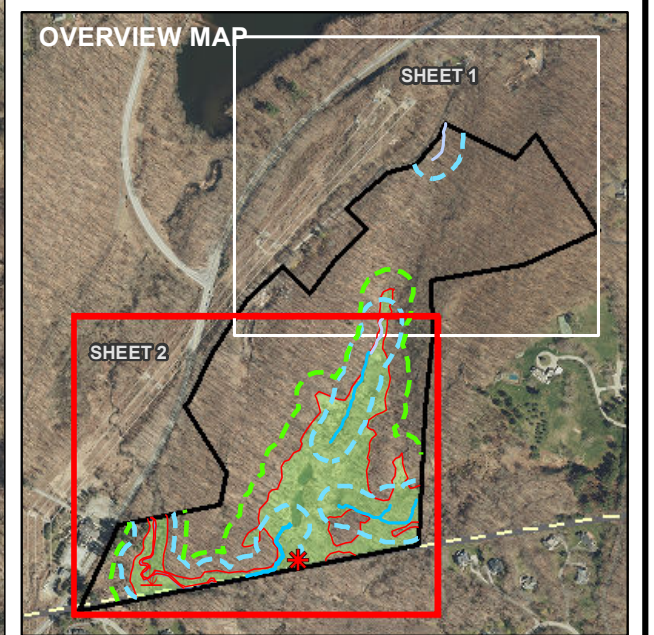


PROJECT:		SOL SYSTEMS DELL AVE	
		TOWN OF YORKTOWN WESTCHESTER COUNTY, NY	
TITLE:		DELINEATED RESOURCES	
DRAWN BY:	S. MOTURI	PROJ NO.:	431302
CHECKED BY:	M. REGAN	FIGURE 4 SHEET 1 of 2	
APPROVED BY:	C. DUNCAN		
DATE:	AUGUST 2022		
FILE NO.:		WANNALANCIT MILLS 650 SUFFOLK STREET LOWEL, MA 01854	
		Fig4_WDR_DellAve_Delineation_11x17_20220831.mxd	



LEGEND

- SITE BOUNDARY
- INVASIVE PLANT
- POSSIBLE VERNAL POOL
- USACE WETLAND PLOT
- USACE UPLAND PLOT
- STREAM FLAG
- WETLAND FLAG
- DELINEATED EPHEMERAL STREAM
- DELINEATED INTERMITTENT STREAM
- DELINEATED PERENNIAL STREAM
- DELINEATED SURFACE WATER
- DELINEATED WETLAND BOUNDARY LINE
- DELINEATED WETLAND
- 100-FT WETLAND ADJACENT AREA (NYSDEC AND YORKTOWN)
- 100-FT STREAM BUFFER (YORKTOWN)
- MUNICIPAL BOUNDARY



PROJECT:		SOL SYSTEMS DELL AVE	
		TOWN OF YORKTOWN WESTCHESTER COUNTY, NY	
TITLE:			
DELINEATED RESOURCES			
DRAWN BY:	S. MOTURI	PROJ NO.:	431302
CHECKED BY:	M. REGAN	FIGURE 4 SHEET 2 of 2	
APPROVED BY:	C. DUNCAN		
DATE:	AUGUST 2022		
FILE NO.:		Fig4_WDR_DellAve_Delineation_11x17_20220831.mxd	



WANNALANCIT MILLS
 650 SUFFOLK STREET
 LOWELL, MA 01854