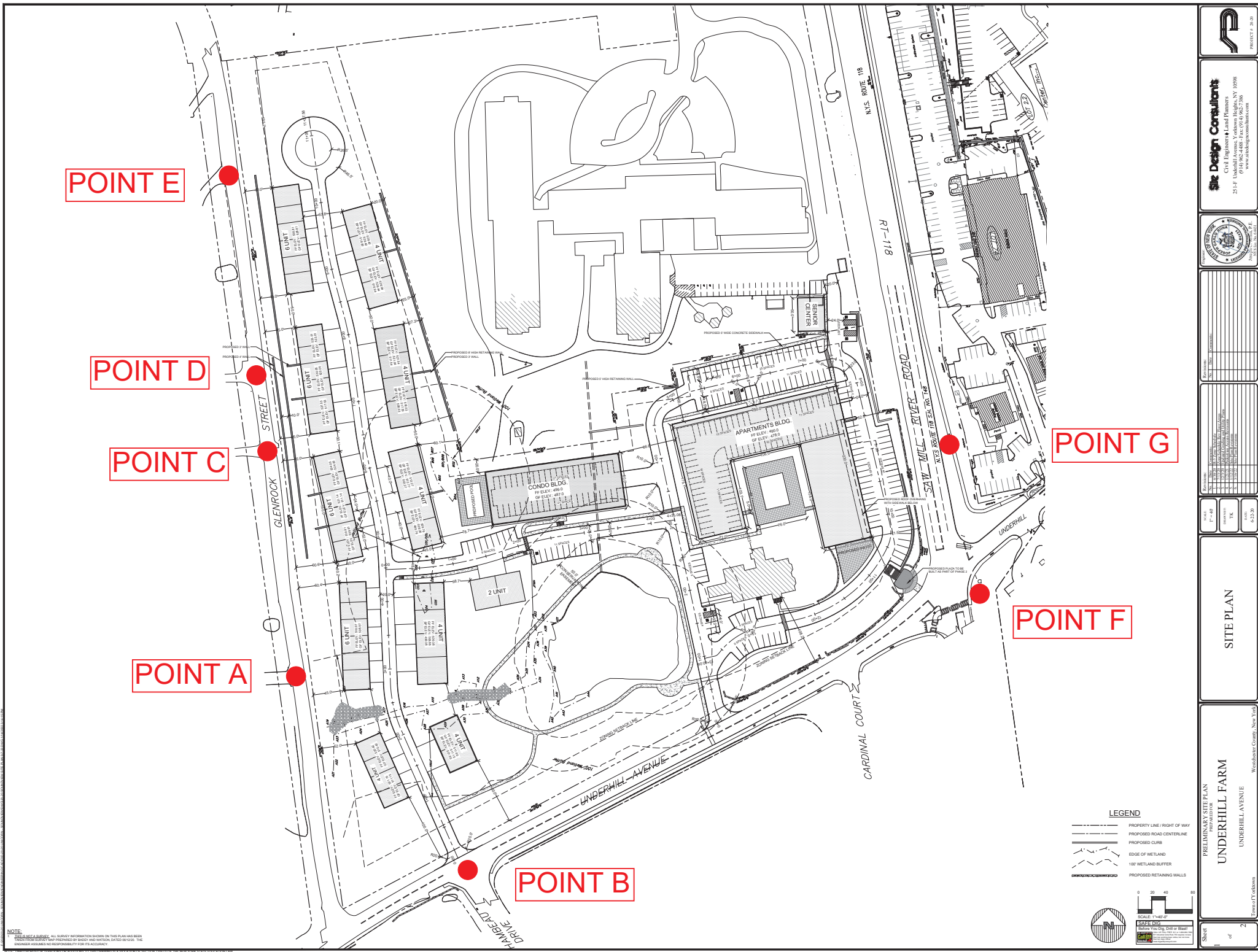


## **Section 2.0 Views Analysis**

As part of the environmental assessment for the proposed Underhill Farms project, an analysis of views of the project both before and after construction is completed. The following photos and simulations represent the existing conditions and expected views from a number of neighborhood locations.

Additional analysis was completed along Glen Rock Street, with additional streetscape and section views now included. Between the grade difference, preservation of existing trees, new landscaping and some existing landscaping buffers on the neighboring properties a significant adverse impact to the Viewshed is not expected. As noted, additional analysis was completed to identify additional existing trees that could be preserved to act as screening.



POINT E

POINT D

POINT C

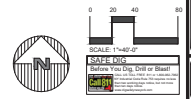
POINT A

POINT B

POINT G

POINT F

- LEGEND**
- PROPERTY LINE / RIGHT OF WAY
  - PROPOSED ROAD CENTERLINE
  - PROPOSED CURB
  - EDGE OF WETLAND
  - 100' WETLAND BUFFER
  - PROPOSED RETAINING WALLS



**NOTE:**  
 THIS IS A PRELIMINARY SITE PLAN. ALL SURVEY INFORMATION SHOWN ON THIS PLAN HAS BEEN OBTAINED FROM A SURVEY CONDUCTED BY THE ENGINEER AND HIS ASSOCIATES, INC. THE ENGINEER ASSUMES NO RESPONSIBILITY FOR THE ACCURACY OF THE SURVEY INFORMATION SHOWN ON THIS PLAN.

**SDC Design Consultants**  
 Civil Engineers & Land Planners  
 251 F. Underhill Avenue, Yorktown Heights, NY 10598  
 (914) 962-4488 • Fax: (914) 962-7386  
 www.sdcdesignconsultants.com

PROJECT NO.	
DATE	
SCALE	
BY	
CHECKED	
DATE	

PRELIMINARY SITE PLAN  
 PROPOSED FOR

UNDERHILL FARM

UNDERHILL AVENUE

Yorktown Heights, New York

SHEET

2

OF

2



View from Glen Rock Street - Point A  
Existing Conditions



View from Glen Rock Street - Point A  
Proposed Conditions - No Screening



View from Glen Rock Street - Point A  
Proposed Conditions With Screening



View from Rochambeau Drive - Point B  
Existing Conditions



View from Rochambeau Drive - Point B  
Proposed Conditions - No Screening



View from Rochambeau Drive - Point B  
Proposed Conditions with Screening





View from Glen Rock Street - Point C  
Existing Conditions



View from Glen Rock Street - Point C  
Proposed Conditions - No Screening



View from Glen Rock Street - Point C  
Proposed Conditions with Screening



View from Glen Rock Street - Point D  
Existing Conditions



View from Glen Rock Street - Point D  
Proposed Conditions - No Screening



View from Glen Rock Street - Point D  
Proposed Conditions with Screening



View from Glen Rock Street - Point E  
Existing Conditions



View from Glen Rock Street - Point E  
Proposed Conditions - No Screening





View from Glen Rock Street - Point E  
Proposed Conditions with Screening



View from Route 118 and Underhill Avenue - Point F  
Existing Conditions



View from Route 118 and Underhill Avenue - Point F  
Proposed Conditions - No Screening



View from Route 118 and Underhill Avenue - Point F  
Proposed Conditions with Screening



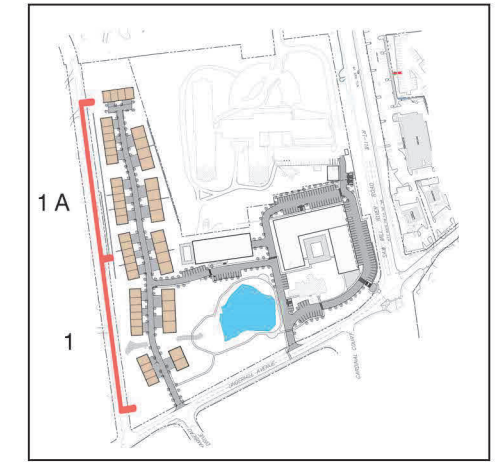
View from Caremount and Route 118 - Point G  
Existing Conditions



View from Caremount and Route 118 - Point G  
Proposed Conditions - No Screening



View from Caremount and Route 118 - Point G  
Proposed Conditions with Screening



KEY PLAN



STREETSCAPE 1A



STREETSCAPE 1

UPHILL TOWHOMES REAR ELEVATIONS  
STREETSCAPE - GLENROCK STREET

UNDERHILL AVENUE DEVELOPMENT

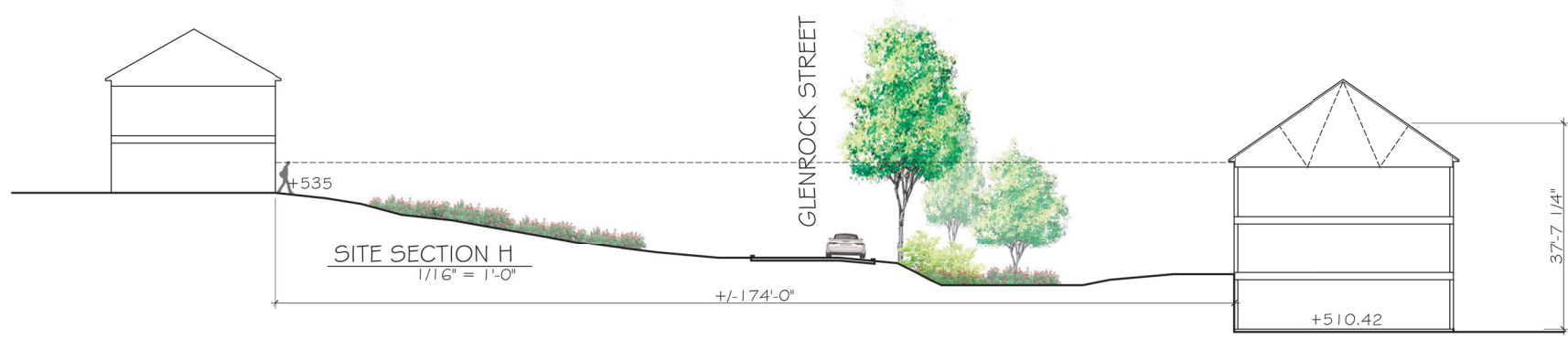
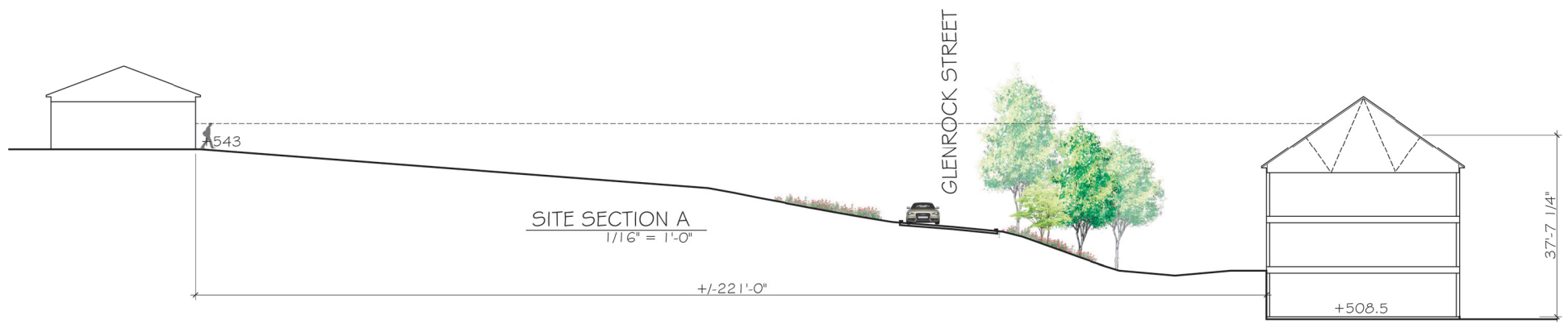
5/3/23  
UNC002A

A.20.2





\*DIMENSIONS, FLOOR ELEVATIONS, GRADING, TREES AND ANY OTHER SITE FEATURES ARE CONCEPTUAL AND APPROXIMATE. THESE MAY VARY OR CHANGE DEPENDING ON MEASURING POINTS AND AS PROJECT DEVELOPS.  
\*DISTANCE FROM EXISTING TO NEW STRUCTURE PROVIDED BY OTHERS.



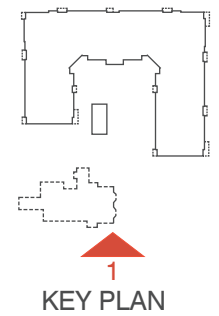
\*DIMENSIONS, FLOOR ELEVATIONS, GRADING, TREES AND ANY OTHER SITE FEATURES ARE CONCEPTUAL AND APPROXIMATE. THESE MAY VARY OR CHANGE DEPENDING ON MEASURING POINTS AND AS PROJECT DEVELOPS.  
 \*DISTANCE FROM EXISTING TO NEW STRUCTURE PROVIDED BY OTHERS.



BUILDING ELEVATION 1

**MATERIAL LEGEND**

- 01 ARCHITECTURAL STONE
- 02 FIBER CEMENT SIDING - WHITE
- 03 FIBER CEMENT TRIM - WHITE
- 04 FIBER CEMENT PANEL - WHITE
- 05 ARCHITECTURAL SHINGLES
- 06 METAL RAILING



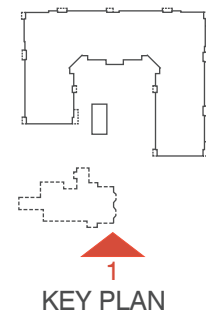
\*NOTE: PRODUCTS AND MANUFACTURERS LISTED ARE SUBJECT TO CHANGE AND/OR TO BE SUBSTITUTED WITH EQUIVALENT AND COMPATIBLE OPTIONS



BUILDING ELEVATION 1

**MATERIAL LEGEND**

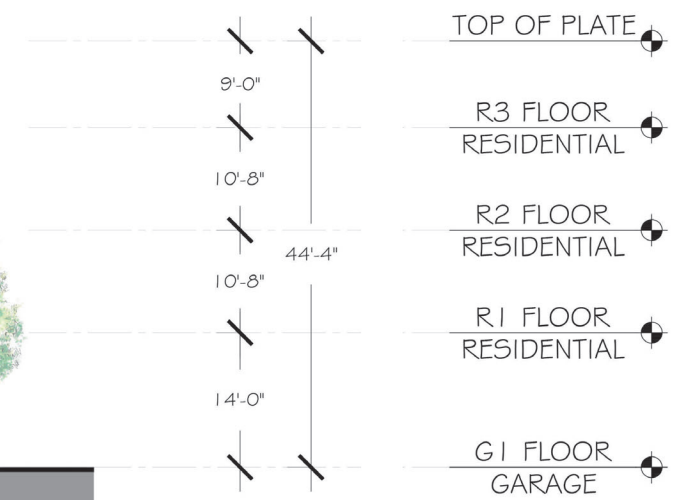
- 01 ARCHITECTURAL STONE
- 02 FIBER CEMENT SIDING - WHITE
- 03 FIBER CEMENT TRIM - WHITE
- 04 FIBER CEMENT PANEL - WHITE
- 05 ARCHITECTURAL SHINGLES
- 06 METAL RAILING



\*NOTE: PRODUCTS AND MANUFACTURERS LISTED ARE SUBJECT TO CHANGE AND/OR TO BE SUBSTITUTED WITH EQUIVALENT AND COMPATIBLE OPTIONS

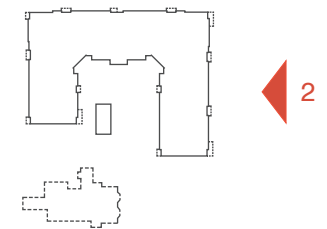


BUILDING ELEVATION 2



**MATERIAL LEGEND**

- 01 ARCHITECTURAL STONE
- 02 FIBER CEMENT SIDING - WHITE
- 03 FIBER CEMENT TRIM - WHITE
- 04 FIBER CEMENT PANEL - WHITE
- 05 ARCHITECTURAL SHINGLES
- 06 METAL RAILING



KEY PLAN

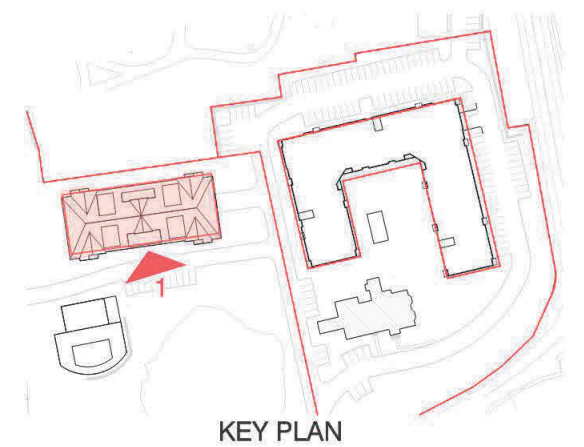
\*NOTE: PRODUCTS AND MANUFACTURERS LISTED ARE SUBJECT TO CHANGE AND/OR TO BE SUBSTITUTED WITH EQUIVALENT AND COMPATIBLE OPTIONS



BUILDING ELEVATION 1

**MATERIAL LEGEND**

- 01 ARCHITECTURAL STONE
- 02 FIBER CEMENT SIDING - WHITE
- 03 FIBER CEMENT TRIM - WHITE
- 04 FIBER CEMENT PANEL - WHITE
- 05 ARCHITECTURAL SHINGLES
- 06 METAL RAILING



\*NOTE: PRODUCTS AND MANUFACTURERS LISTED ARE SUBJECT TO CHANGE AND/OR TO BE SUBSTITUTED WITH EQUIVALENT AND COMPATIBLE OPTIONS



ELEV. 1

ELEV. 2

ELEV. 1

ELEV. 1

ELEV. 2

ELEV. 1

28X40 UPHILL TOWNHOMES ELEVATION



ELEV. 1

ELEV. 2

ELEV. 2

ELEV. 1

37X46 DOWNHILL TOWNHOMES ELEVATION

**MATERIAL LEGEND**

- 01 ARCHITECTURAL STONE
- 02 FIBER CEMENT SIDING - WHITE
- 03 FIBER CEMENT TRIM - WHITE
- 04 FIBER CEMENT PANEL - WHITE
- 05 ARCHITECTURAL SHINGLES
- 06 METAL RAILING



28X40 UPHILL TOWNHOMES ELEVATION



37X46 DOWNHILL TOWNHOMES ELEVATION



MATERIAL LEGEND

- 01 ARCHITECTURAL STONE
- 02 FIBER CEMENT SIDING - WHITE
- 03 FIBER CEMENT TRIM - WHITE
- 04 FIBER CEMENT PANEL - WHITE
- 05 ARCHITECTURAL SHINGLES
- 06 METAL RAILING