

1515 Journey Ends Road
Tree Replacement Plan

Plant Information



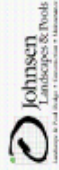
Johnsen Landscapes & Pools

PO Box 1011 Mt Kisco, NY 10549

914-666-4190

www.johnsenlandscapes.com

1515 JOURNEYS END ROAD TREE REPLACEMENT PLAN FOR CROTON ON HUDSON, NY 10510

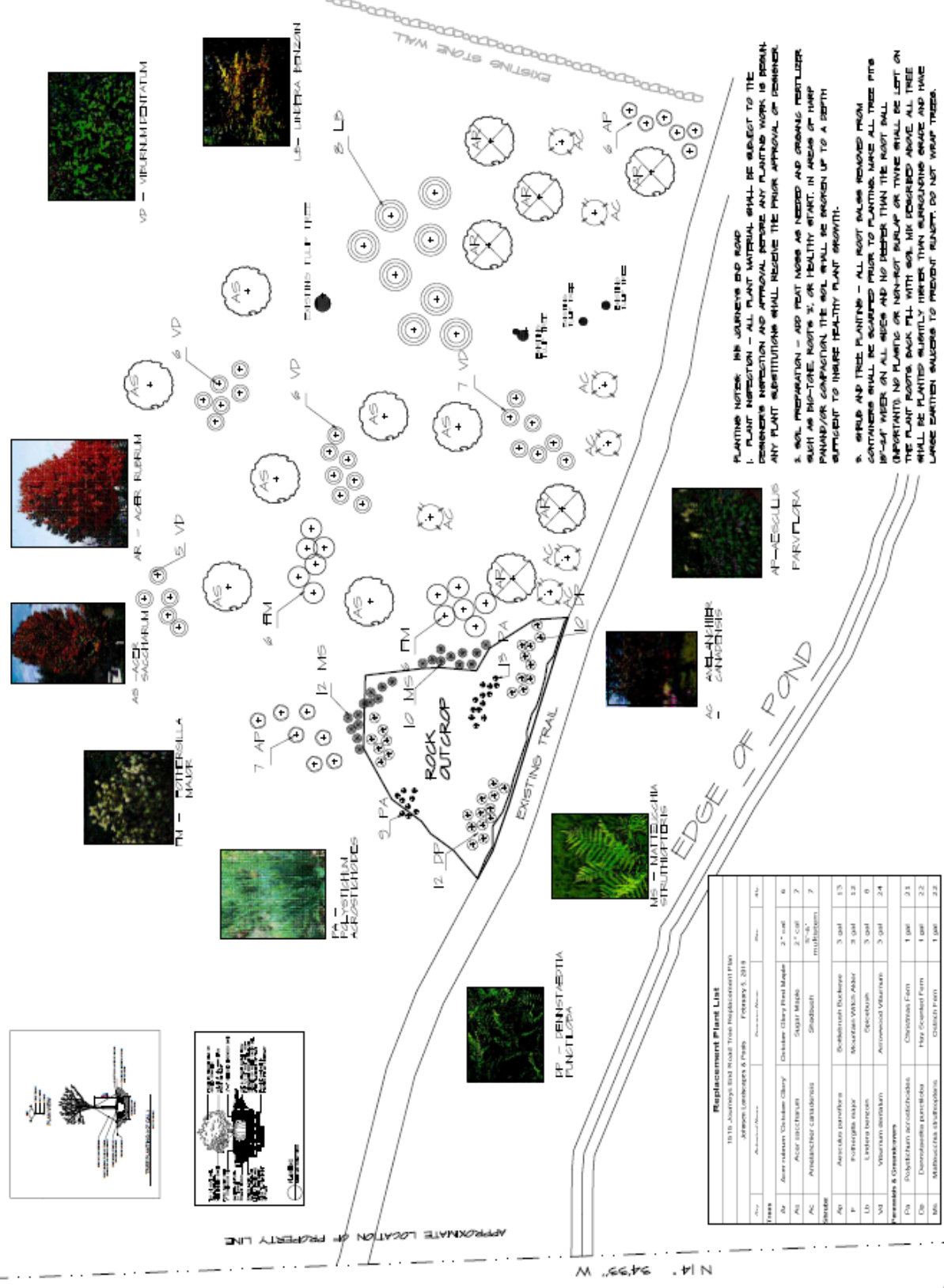


NOTE: BE SURE TO READ THE ENTIRE MANUAL TO BE AWARE OF THE PROPER PLANTING METHODS TO BE USED FOR ALL PLANTS AND TREES. THE PLANTING MANUAL IS AVAILABLE FOR PURCHASE AT THE FOLLOWING WEBSITE: www.johnsonlandscapes.com

1. ALL PLANTS AND TREES MUST BE PLANTED AT THE SAME TIME AS THE CONSTRUCTION OF THE DRIVEWAY AND SIDEWALKS. ALL PLANTS AND TREES MUST BE PLANTED AT THE SAME TIME AS THE CONSTRUCTION OF THE DRIVEWAY AND SIDEWALKS. ALL PLANTS AND TREES MUST BE PLANTED AT THE SAME TIME AS THE CONSTRUCTION OF THE DRIVEWAY AND SIDEWALKS.

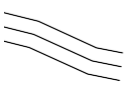
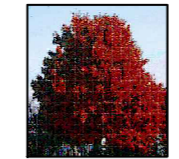
2. ALL PLANTS AND TREES MUST BE PLANTED AT THE SAME TIME AS THE CONSTRUCTION OF THE DRIVEWAY AND SIDEWALKS. ALL PLANTS AND TREES MUST BE PLANTED AT THE SAME TIME AS THE CONSTRUCTION OF THE DRIVEWAY AND SIDEWALKS.

3. ALL PLANTS AND TREES MUST BE PLANTED AT THE SAME TIME AS THE CONSTRUCTION OF THE DRIVEWAY AND SIDEWALKS. ALL PLANTS AND TREES MUST BE PLANTED AT THE SAME TIME AS THE CONSTRUCTION OF THE DRIVEWAY AND SIDEWALKS.



- PLANTING NOTES: 1515 JOURNEYS END ROAD**
1. PLANT SELECTION - ALL PLANT MATERIAL SHALL BE SUBJECT TO THE GENERAL SUPERVISOR AND APPROVAL BEFORE ANY PLANTING WORK IS BEGUN. ANY PLANT SUBSTITUTIONS SHALL RECEIVE THE PRIOR APPROVAL OF THE GENERAL SUPERVISOR.
 2. SOIL PREPARATION - ADD PEAT MOSS AS NEEDED AND GRASSING RESTRICTION SHALL BE ENFORCED. ROOTS 3' OR HEALTHY STEM IN AREAS OF HARD PAN/CLAY COMPACTED SOIL SHALL BE REMOVED UP TO A DEPTH SUFFICIENT TO INSURE HEALTHY PLANT GROWTH.
 3. SPILL AND TREE PLANTING - ALL ROOT BALLS REMOVED FROM CONTAINERS SHALL BE SCAMPED PRIOR TO PLANTING. MAKE ALL TREE PITS 18" DEEP WIDER ON ALL SIDES AND NO DEEPER THAN THE ROOT BALL. PLANTING SHALL BE DONE IN THE MIDDLE OF THE PITS. THE PLANT ROOTS SHALL BE PLACED IN THE MIDDLE OF THE PITS. THE PLANT ROOTS SHALL BE PLACED IN THE MIDDLE OF THE PITS. THE PLANT ROOTS SHALL BE PLACED IN THE MIDDLE OF THE PITS.

Code	Species/Plant	Quantity	Size	Notes
AS	Acer rubrum	6	2" - 3"	Red Maple
AP	Aster multiflorus	7	2" - 3"	Star Jasmine
VP	Viburnum acerifolium	7	2" - 3"	Blackhaw
FM	Fern	7	2" - 3"	Various Ferns
MS	Monarda	7	2" - 3"	Various Monarda
PA	Plantain	7	2" - 3"	Various Plantain
DF	Daylily	7	2" - 3"	Various Daylilies
LF	Lily	7	2" - 3"	Various Lilies
ME	Meibomia	7	2" - 3"	Various Meibomia
BF	Berberis	7	2" - 3"	Various Berberis
AC	Aster	7	2" - 3"	Various Aster



Replacement Plant List

1515 Journeys End Road Tree Replacement Plan

Johnsen Landscapes & Pools

February 5, 2018

<u>Key</u>	<u>Botanical Name</u>	<u>Common Name</u>	<u>Size</u>	<u>Qty.</u>
Trees				
Ar	Acer rubrum 'October Glory'	October Glory Red Maple	2" cal	6
As	Acer saccharum	Sugar Maple	2" cal	7
Ac	Amelanchier canadensis	Shadbush	5'-6' multi-stem	7
Shrubs				
Ap	Aesculus parviflora	Bottlebrush Buckeye	3 gal	13
F	Fothergilla major	Mountain Witch Alder	3 gal	12
Lb	Lindera benzoin	Spicebush	3 gal	8
Vd	Viburnum dentatum	Arrowwood Viburnum	3 gal	24
Perennials & Groundcovers				
Pa	Polystichum acrostichoides	Christmas Fern	1 gal	21
Dp	Dennstaedtia punctiloba	Hay Scented Fern	1 gal	22
Ms	Matteucchia struthiopteris	Ostrich Fern	1 gal	22

TREES



ACER RUBRUM 'OCTOBER GLORY'
Red Maple

Acer rubrum 'October Glory' is noted for its exceptional fall color. It grows to 40-50' tall with an oval rounded form. It can grow in river flood plains. Attractive red flowers appear in early spring before the foliage emerges. Leaves retain green color into fall. Orange to red fall color is brilliant.

ACER SACCHARUM
Sugar Maple

Beautiful shade tree with an upright oval to broad form with stout solid branches. Dark green foliage turns a dazzling mixture of yellow, orange and scarlet in autumn. Deciduous. Full sun. Slow growing to 50 ft. tall, 30 ft. wide. Larger with age. Insect resistant variety.



AMELANCHIER CANADENSIS
Serviceberry

Serviceberry is a small, deciduous, usually multi-trunked understory tree or tall shrub which is native to open woods in Eastern North America where it typically grows 15-25' tall. Features showy, 5-petaled, slightly fragrant, white flowers which appear in early spring before the leaves. Flowers give way to small edible berries.



SHRUBS

AESCULUS PARVIFLORA **Bottlebrush Buckeye**

A small buckeye, bottlebrush is a mound-shaped, thicket-forming, deciduous shrub, 6-12 ft. tall, with long fluffy white flower clusters in early July. It is useful as an understory planting in woodland gardens, The coarse-textured, dark green compound leaves turn buttery yellow in the fall.



FOTHERGILLA **Fothergilla major**

An Allegheny Mountain native. White flowers bloom in spring, resembling a bottle brush. Has a sweet honey scent. Summer foliage is dark green with faint blue tints, turns yellow and orange in fall. Beautiful in shrub borders or as background in woodland areas. Deciduous. Part shade. 5 feet tall.



Lindera benzoin—Spicebush

This is a broad, rounded multi-stemmed shrub covered with fragrant yellow flowers in early spring. Aromatic light green leaves turn yellow-gold in fall. Birds feed on the brilliant red fruits in late summer on female plants. These berries are one of the best sources of energy for long distance migratory birds.



VIBURNUM DENTATUM

Arrowwood viburnum

Easily grown in well-drained soil in full sun to part shade.
A multi-stemmed, shrub 6-10' tall with similar spread.
Non-fragrant white flowers in late spring followed by blue-black drupes which attract birds.

GROUNDCOVERS, PERENNIALS

NORTH AMERICAN HAY-SCENTED FERN *Dennstaedtia punctiloba*

Excellent fern for large scale, dramatic naturalizing. Creates continuous colonies via long creeping rhizomes. Spreads rapidly to solve ground plane problems. Effective for forest floor in woodland garden settings. Ideal adjacent to protected rock waterfalls and pools. Tolerates a wide range of lighting. Herbaceous fern. Shade to part sun. Fast growth 2 to 3 feet



MATTEUCCIA STRUTHIOPTERIS Ostrich Fern

Large, graceful fronds resemble ostrich plumes. Excellent fern for woodland gardens and damp areas such as edging around a pond. Provide humus-rich, moist, but well-drained soil for best performance.

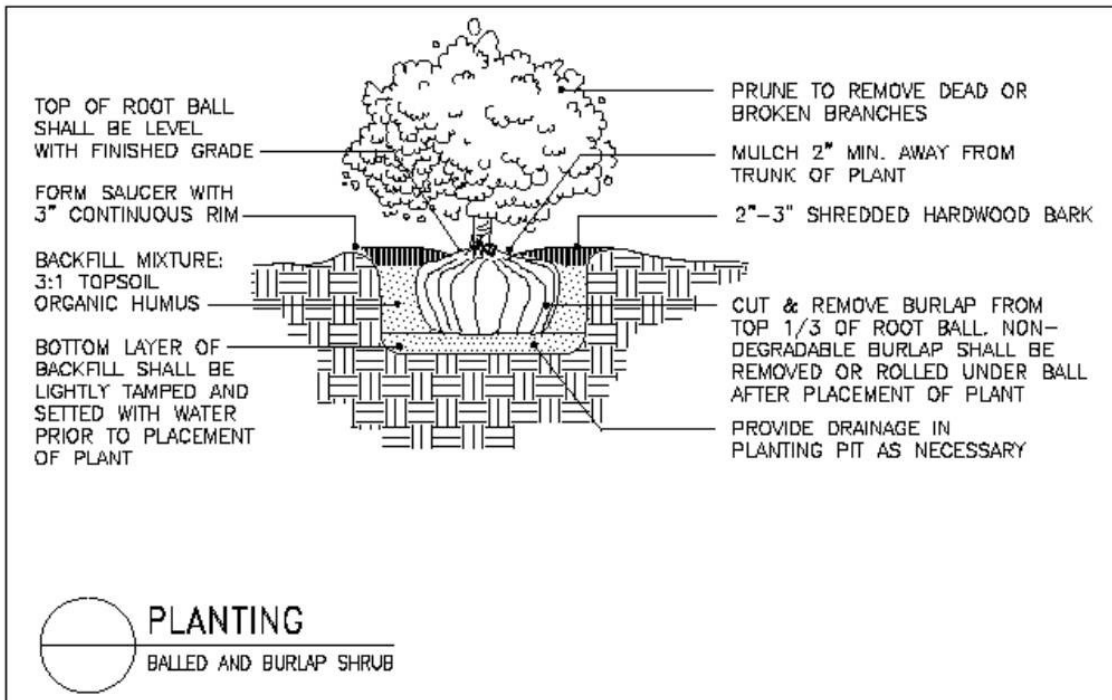


CHRISTMAS FERN *Polystichum acrostichoides*

Low growing eastern US native fern. Produces a low spreading habit with narrow, upright fronds about 2 feet long. Remains green throughout much of the winter in the south with limited dieback. Fronds are dark, leathery and just 5 inches wide. Shade or part shade. Fast growing to 30 inches tall and about as wide



Planting Notes—Johnsen Landscapes & Pools



It has been our experience that the diets of deer, rabbits and other animal pests are subject to change depending on the severity of the winter. We cannot guarantee plants against deer, rabbits or other animal damage.

Plant Inspection

All plant material shall be subject to the Designer's inspection and approval before any planting work is begun. Any plant substitutions shall receive the prior approval of the designer.

Soil and Bed Preparation

The following soil amendments shall be added: peat moss as needed and organic fertilizer such as Bio-Tone , 'Roots 2' or Healthy Start. In areas of hard pan and/or compaction, the soil shall be tilled to a depth sufficient to insure healthy plant growth.

Shrub and Tree Planting

All root balls removed from containers shall be scarified prior to planting. Make all tree pits 12" – 18" wide on all sides and **no deeper than the root ball**. No plastic or non-rot burlap or twine shall be left on the plant roots. Back fill with soil mix prepared as described above. All trees shall be planted slightly higher than surrounding grade and have large earthen saucers to prevent runoff. Do not wrap trees.