

# Ecological Solutions, LLC

Connecticut  
1248 Southford Road  
Southbury, CT 06488  
Phone (203) 910-4716  
ecolsol@aol.com

October 17, 2019

Peder W. Scott, PE, RA  
c/o P.W. Scott Engineering & Architecture, PC  
3871 Danbury Road  
Brewster, NY 10509

*Re: Wetland Delineation  
408 Illington Road  
Town of Yorktown, Westchester County, NY*

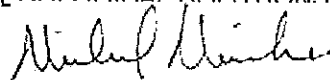
Dear Peder:

Ecological Solutions, LLC completed a wetland delineation on October 15, 2019 for the proposed pond and dam rehabilitation located at 408 Illington Road in the Town of Yorktown, New York (*Figure 1*). The delineation was completed in accordance with the Army Corps of Engineers (USACE) Wetlands Delineation Manual (January 1987), Routine Determination Method and recent Northcentral/Northeast supplement, New York State Department of Environmental Conservation (NYSDEC) Article 24 wetland regulations, and Town of Yorktown Code Chapter 178 Freshwater Wetlands.

The wetland in the project area at the site is an intermittent watercourse approximately 10 feet wide with a gravelly/stoney bottom that leads to a small wetland dominated by reed grass. This wetland was delineated based upon the identification of the three mandatory criteria for wetland determination as outlined in the 1987 Federal Manual and supplement: dominant hydrophytic vegetation, hydric soils, and evidence of wetland hydrology. Transects consisting of at several sample points were walked. Vegetation around each sample point was identified and its percent cover quantified. The areas were checked in detail for the presence of wetland hydrologic indicators. Soil profiles were then observed and characterized and it was determined that hydric soils also exist.

Based on observed field conditions the wetland/watercourse delineated at the site is Federal and Town wetland. The watercourse is also noted as a class B wetland by the NYSDEC and its bed and banks are regulated under Article 15 protection of waters. The watercourse/wetland has a Town regulated 100 foot buffer but no State or Federal buffer. If you need any additional information, please contact me.

Sincerely,  
ECOLOGICAL SOLUTIONS LLC



Michael Nowicki  
Biologist

Figure 1 Location Map

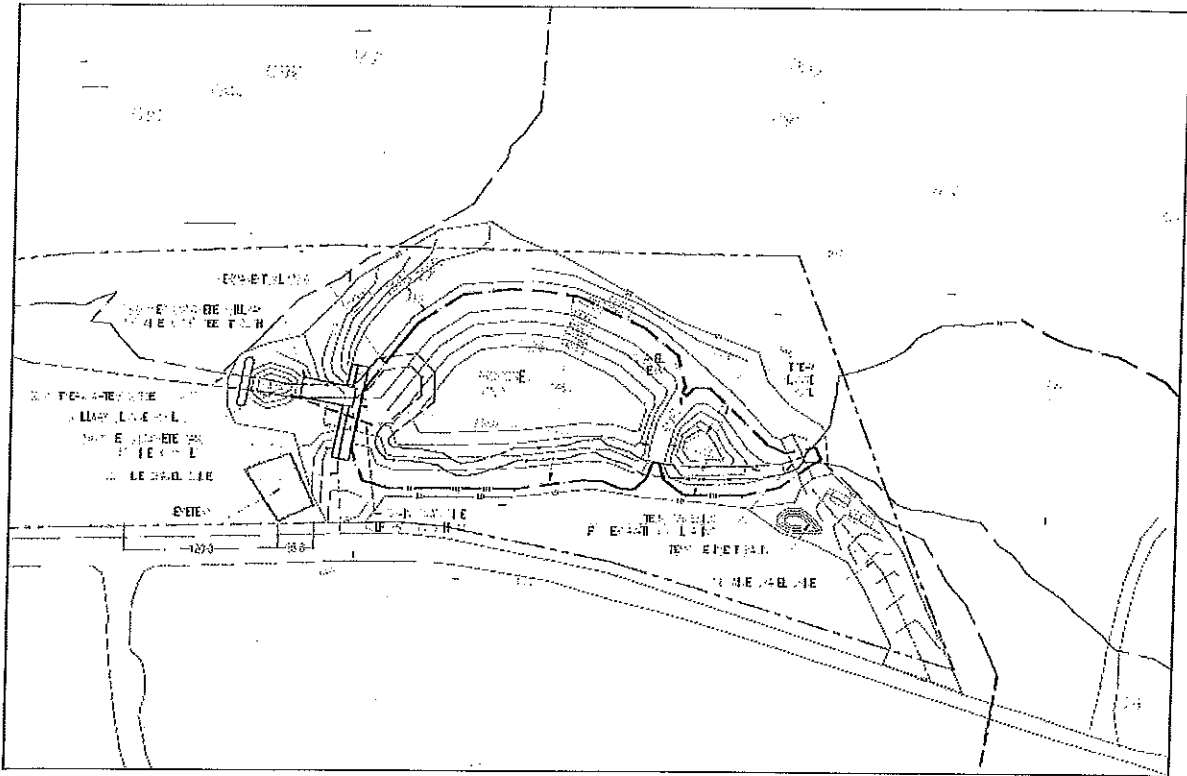


Figure 2 NYSDEC Map

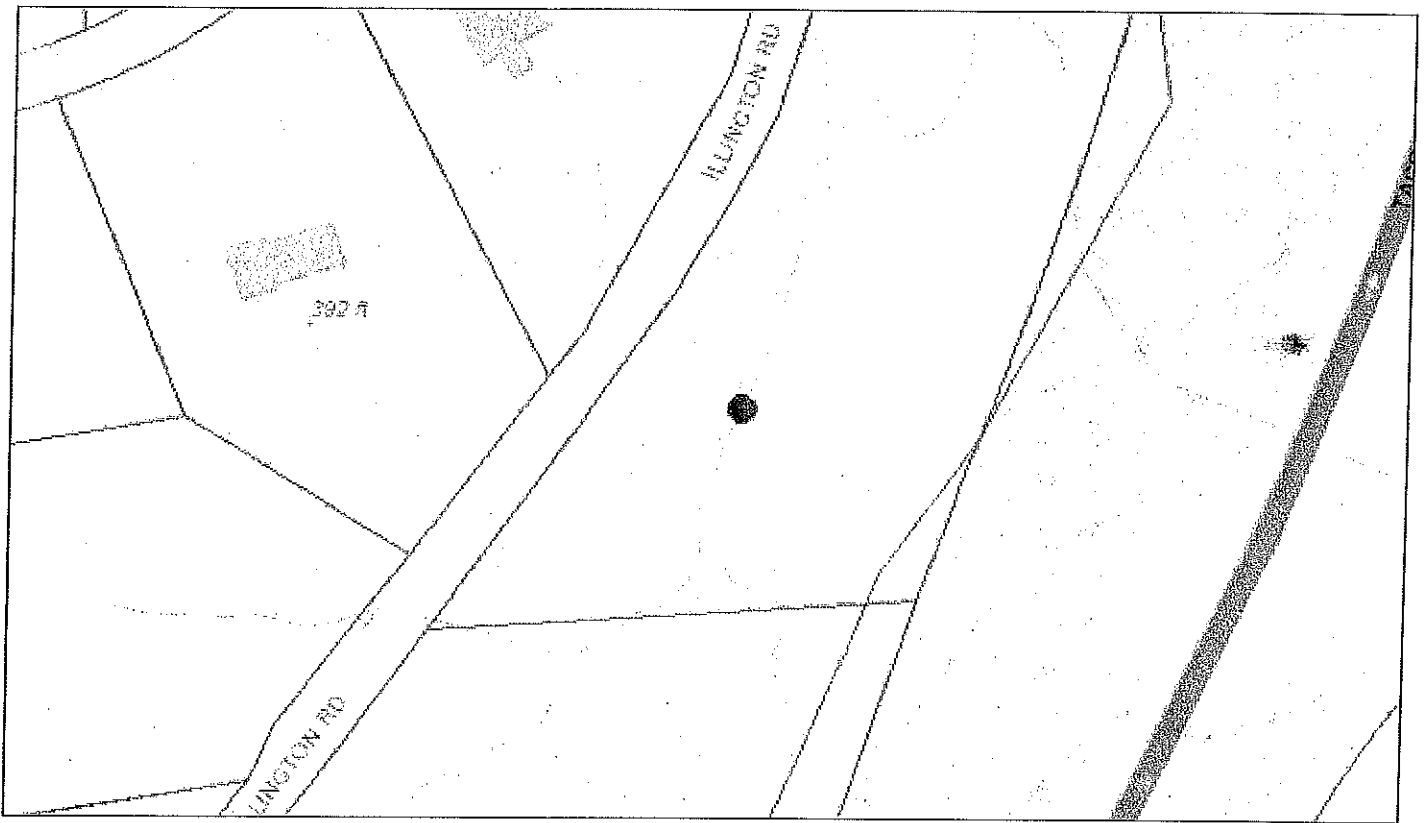
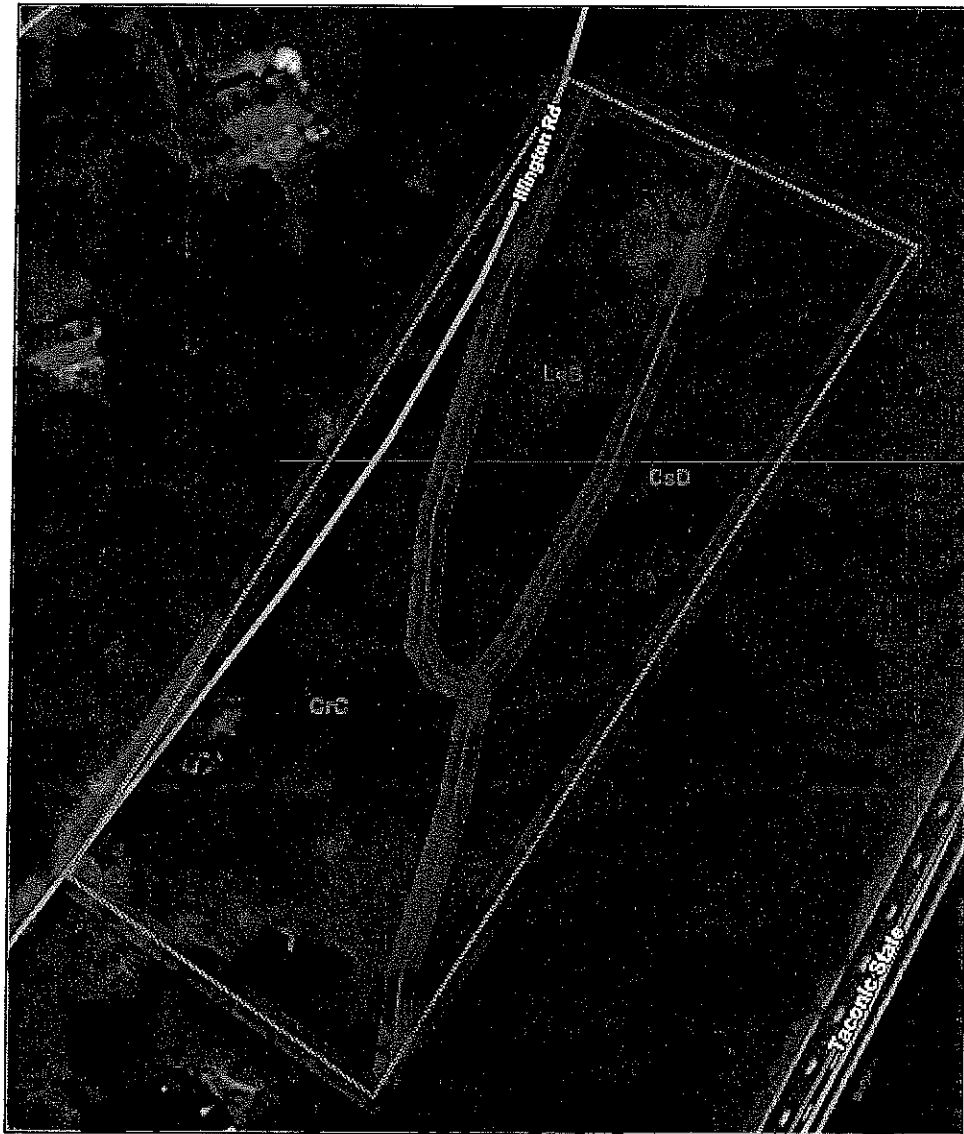


Figure 3 Soil Map

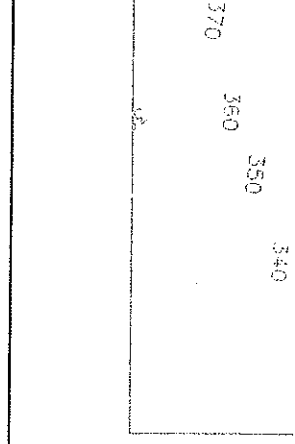
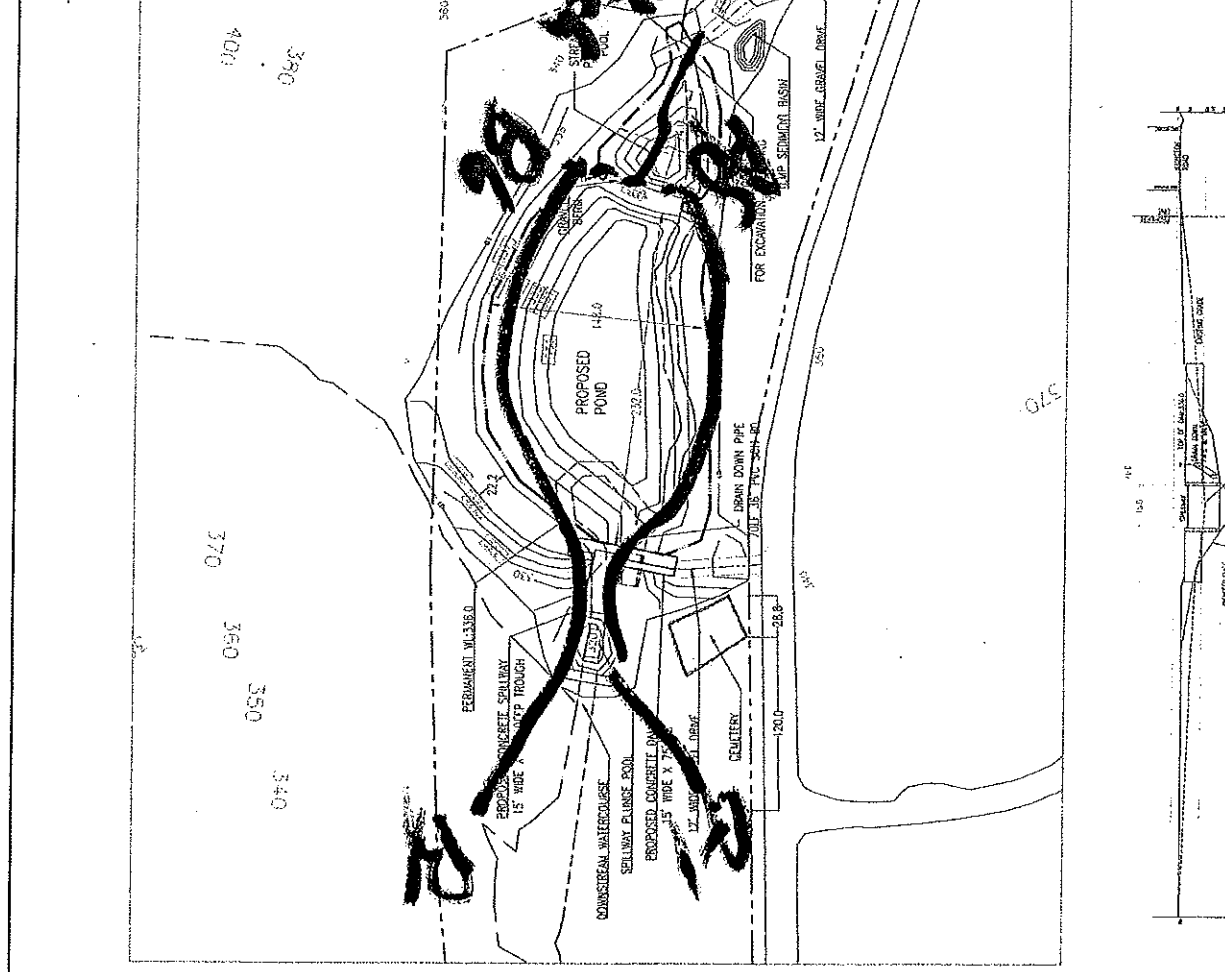


Map Unit Symbol	Map Unit Name
CrC	Chariton-Chatfield complex, 0 to 15 percent slopes, very rocky
CsD	Chatfield-Chariton complex, 15 to 35 percent slopes, very rocky
LeB	Leicester loam, 2 to 8 percent slopes, very stony

**VICINITY MAP**  
SCALE: 1" = 200' N.

**LEGEND**  
NOT TO SCALE

- PROPERTY LINE
- - - ZONING setback line
- RYS DES WETLAND
- RYS DES WETLAND setback
- RESPONSE CS 2 CONTOUR
- STREAM COURSE
- TOWN OF YORKTOWN WETLAND SOILS
- SCS SOIL USE



**SKETCH PLAN**

GRAPHIC SCALE  
1" = 100' N.

100 200 300 400 500

NO.	DATE	REVISIONS	DESCRIPTION
1			
2			
3			
4			
5			

P. M. SCOTT  
ENGINEERING + ARCHITECTURE P.C.  
307 ROUTE 6  
BREWSTER, NY 10898 845-279-2100

**PRELIMINARY SITE PLAN**  
408 LUNNINGTON ROAD  
ROSSINI, NY  
Project No. 19-145  
Drawing No. F.1.  
Date 09-01-19  
Scale AS SHOWN